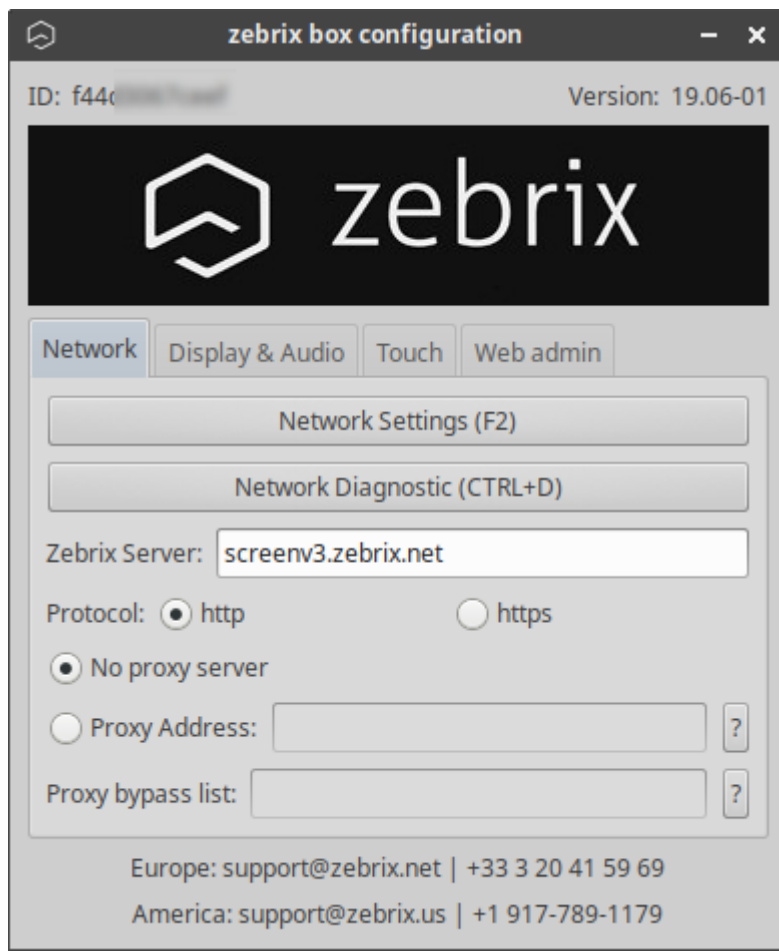


-Activate touch mode-

Open the Zebrix control panel by pressing “F1”.



go to the “Touch” tab and tick the “Touch Screen mode” box



Touch mode is now activated.

Checking the touch configuration:**__

Open the terminal by pressing windows+T

write: export DISPLAY=:0.0

```
zebrix@zebrix-box-16b4da:~$ export DISPLAY=:0
```

Press enter, then: xinput -list

```
zebrix@zebrix-box-16b4da:~$ xinput --list
❑ Virtual core pointer          id=2      [master pointer  (3)]
❑   ❑ Virtual core XTEST pointer  id=4      [slave pointer   (2)]
❑   ❑ Advanced Silicon S.A. SamsungUSBTouch_CAP_043 id=10     [slave pointer   (2)]
❑ Virtual core keyboard        id=3      [master keyboard (2)]
❑   ❑ Virtual core XTEST keyboard  id=5      [slave keyboard  (3)]
❑   ❑ Power Button                 id=6      [slave keyboard  (3)]
❑   ❑ Video Bus                   id=7      [slave keyboard  (3)]
❑   ❑ Power Button                 id=8      [slave keyboard  (3)]
❑   ❑ Sleep Button                 id=9      [slave keyboard  (3)]
❑   ❑ Advanced Silicon S.A. SamsungUSBTouch_CAP_043 Pen id=11    [slave keyboard  (3)]
```

A list of all pointer devices should appear, select the corresponding one and copy its full name.

Open the zebrix.conf file with the command: nano /opt/zebrix/zebrix.conf

```
zebrix@zebrix-box-16b4da:~$ nano /opt/zebrix/zebrix.conf
```

and paste the name of the device on the "TOUCHPANEL" line:

```
GNU nano 2.9.3
ZEBRIX_SERVER="screen.zebrix.net"
RESOLUTION="auto"
HARDWAREACCELERATION="true"
PROTOCOL="http"
ORIENTATION="left"
TOUCHMODE="true"
TOUCHPANEL="Advanced Silicon S.A. SamsungUSBTouch_CAP_043"
PROXYMODE="disabled"
PROXYADDRESS=""
PROXYBYPASSLIST=""
HEARTBEAT="true"
WEBACCESS="false"
WEBAUTH="09507d770ac3eec0fla8c29681a91cdb061d2a760df26c373ab6e15b612ff43f"
OFFLINEMODE="true"
WATCHDOG_TIMER="false"
```

the Touchmode line must be set to "TRUE".

Then press Ctrl+X to close the console. When the window asks you for confirmation, press Y to save (do not change the file name).

From: <https://documentation.zebrix.net/> - **zebrix documentation**

Permanent link: https://documentation.zebrix.net/doku.php?id=en:activer_et_configurer_le_mode_tactile&rev=1707812669

Last update: **2024/02/13 09:24**

