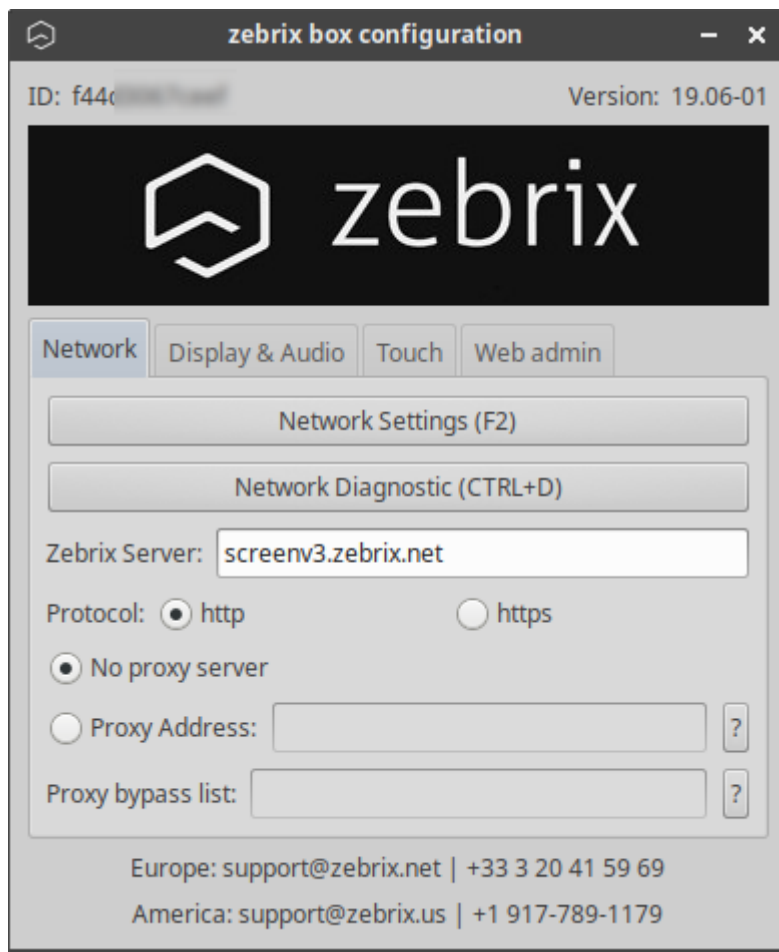


Activate touch mode on Zebrix player

Open the Zebrix control panel by pressing "F1".



go to the "Touch" tab and tick the "Touch Screen mode" box



Touch mode is now activated.

Checking the touch configuration:**__

Open the terminal by pressing windows+T

write: export DISPLAY=:0.0

```
zebrix@zebrix-box-16b4da:~$ export DISPLAY=:0
```

Press enter, then: xinput -list

```
zebrix@zebrix-box-16b4da:~$ xinput --list
❑ Virtual core pointer          id=2      [master pointer  (3)]
❑   ❑ Virtual core XTEST pointer  id=4      [slave pointer   (2)]
❑   ❑ Advanced Silicon S.A. SamsungUSBTouch_CAP_043 id=10     [slave pointer   (2)]
❑ Virtual core keyboard        id=3      [master keyboard (2)]
❑   ❑ Virtual core XTEST keyboard  id=5      [slave keyboard  (3)]
❑   ❑ Power Button                 id=6      [slave keyboard  (3)]
❑   ❑ Video Bus                    id=7      [slave keyboard  (3)]
❑   ❑ Power Button                 id=8      [slave keyboard  (3)]
❑   ❑ Sleep Button                 id=9      [slave keyboard  (3)]
❑   ❑ Advanced Silicon S.A. SamsungUSBTouch_CAP_043 Pen id=11    [slave keyboard  (3)]
```

A list of all pointer devices should appear, select the corresponding one and copy its full name.

Open the zebrix.conf file with the command: nano /opt/zebrix/zebrix.conf

```
zebrix@zebrix-box-16b4da:~$ nano /opt/zebrix/zebrix.conf
```

and paste the name of the device on the "TOUCHPANEL" line:

```
GNU nano 2.9.3
ZEBRIX_SERVER="screen.zebrix.net"
RESOLUTION="auto"
HARDWAREACCELERATION="true"
PROTOCOL="http"
ORIENTATION="left"
TOUCHMODE="true"
TOUCHPANEL="Advanced Silicon S.A. SamsungUSBTouch_CAP_043"
PROXYMODE="disabled"
PROXYADDRESS=""
PROXYBYPASSLIST=""
HEARTBEAT="true"
WEBACCESS="false"
WEBAUTH="09507d770ac3eec0fla8c29681a91cdb061d2a760df26c373ab6e15b612ff43f"
OFFLINEMODE="true"
WATCHDOG_TIMER="false"
```

the Touchmode line must be set to "TRUE".

Then press Ctrl+X to close the console. When the window asks you for confirmation, press Y to save (do not change the file name).

From: <https://documentation.zebrix.net/> - **zebrix documentation**

Permanent link: https://documentation.zebrix.net/doku.php?id=en:activer_et_configurer_le_mode_tactile&rev=1707983432

Last update: **2024/02/15 08:50**

