

How to deploy an Eink (Android) screen with zebrix

Prerequisites

- A Windows computer
- From the zebrix documentation, download:

1. The Eink installation zip specific to the screen brand:

a) Sharp:

- 1. Zip of the Sharp Service Tools application
- 2. Configuration file for the Service Tools application: `Configurationsystemsetting_default.dat`
- 3. Zip of Platform Tools (ADB)
- 4. Zip of Screen copy
- 5. Installation script

b) Philips:

- 1. Zip of Platform Tools (ADB)
- 2. Zip of Screen copy
- 3. Installation script

2. Android application "zebrix-signage-eink-latest.apk"

Step 1: Install ADB

1. Extract Platform Tools:

From the previously extracted Eink installation folder, now extract Platform Tools to a folder of your choice.

2. Add ADB to the PATH

To run ADB from any directory, add the extracted folder (containing `adb.exe`) to the PATH environment variable:

- a) Open Control Panel > System and Security > System, then click Advanced system settings.
- b) Click Environment Variables, select the Path variable under "System variables", then click Edit.
- c) Click New and paste the full path to the folder containing `adb.exe`.
- d) Confirm and restart your terminal for the changes to take effect.

3. Test the installation

Open a command prompt (cmd.exe) and type:

```
adb version
```

If installed correctly, the adb version should appear.

Step 1b: Install Screencopy

1. Extract scrcpy

From the previously extracted installation folder, extract scrcpy to a folder of your choice.

2. Add scrcpy to the PATH

To run scrcpy easily from any folder, add the path of the extracted folder to the PATH environment variable in the same way as for ADB.

3. Test the installation

Open a command prompt and type:

```
scrcpy -version
```

If installed correctly, the scrcpy version should appear.

Step 2: Configure the network and enable developer mode (Sharp-specific)

1. Connect the screen to the computer

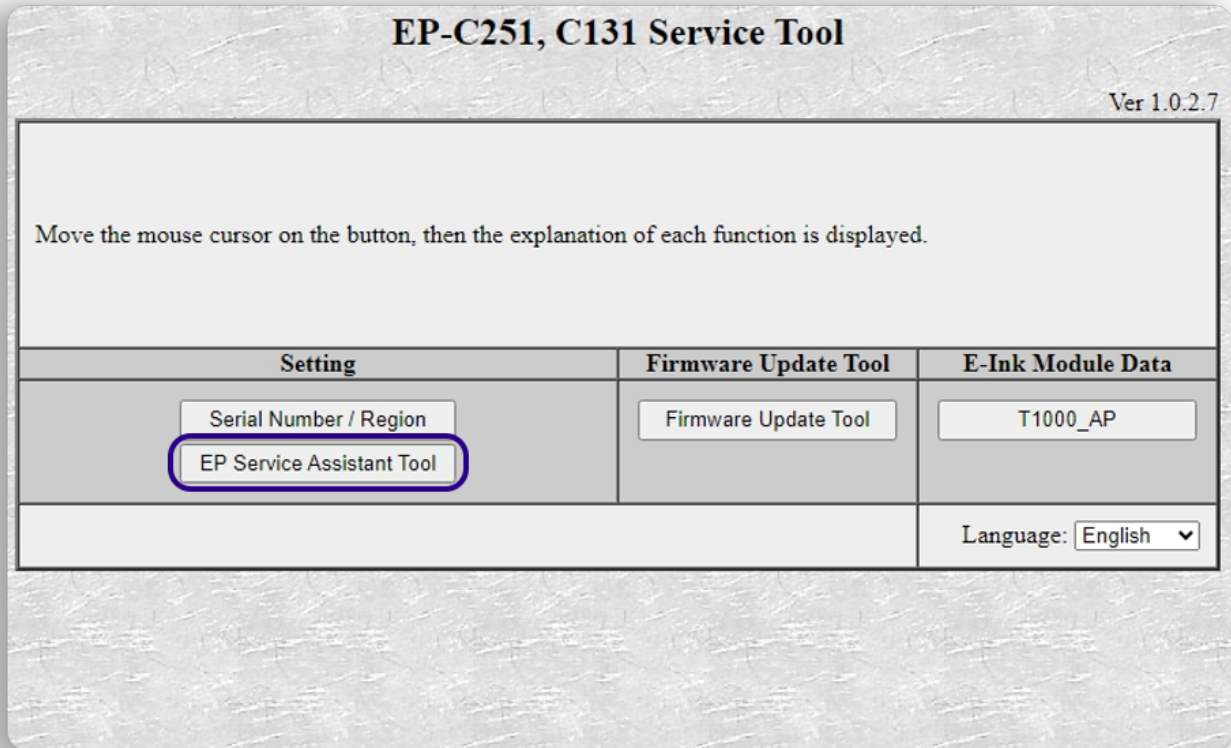
Plug a USB-C cable into the Sharp screen (PC/MEMORY port) and the Windows computer.



Ensure the device is visible from File Explorer (if not, unplug and reconnect the screen to the PC)

2. Service Tools

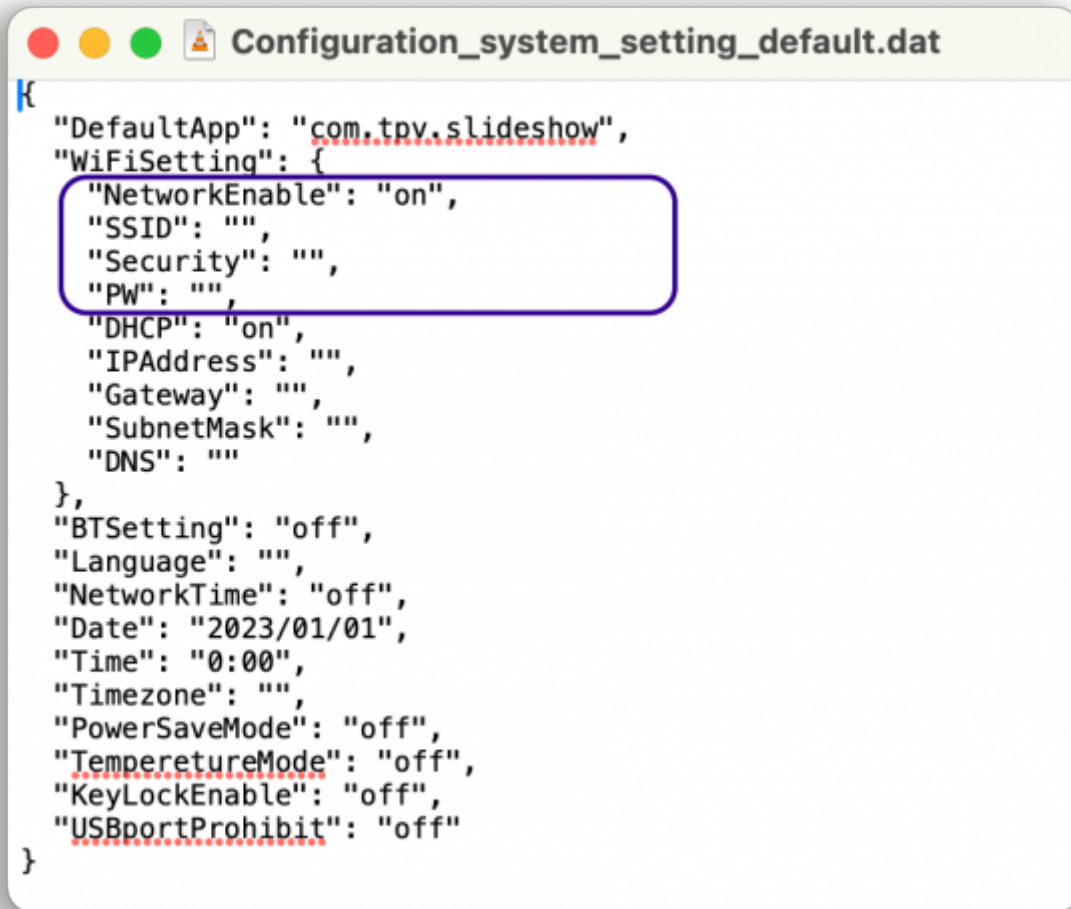
Extract the Service Tools folder and open it. Inside, launch the Service Tool Launcher application.



Then click on EP Assistant Tool

3. Edit the Configuration-system-setting-default.dat file

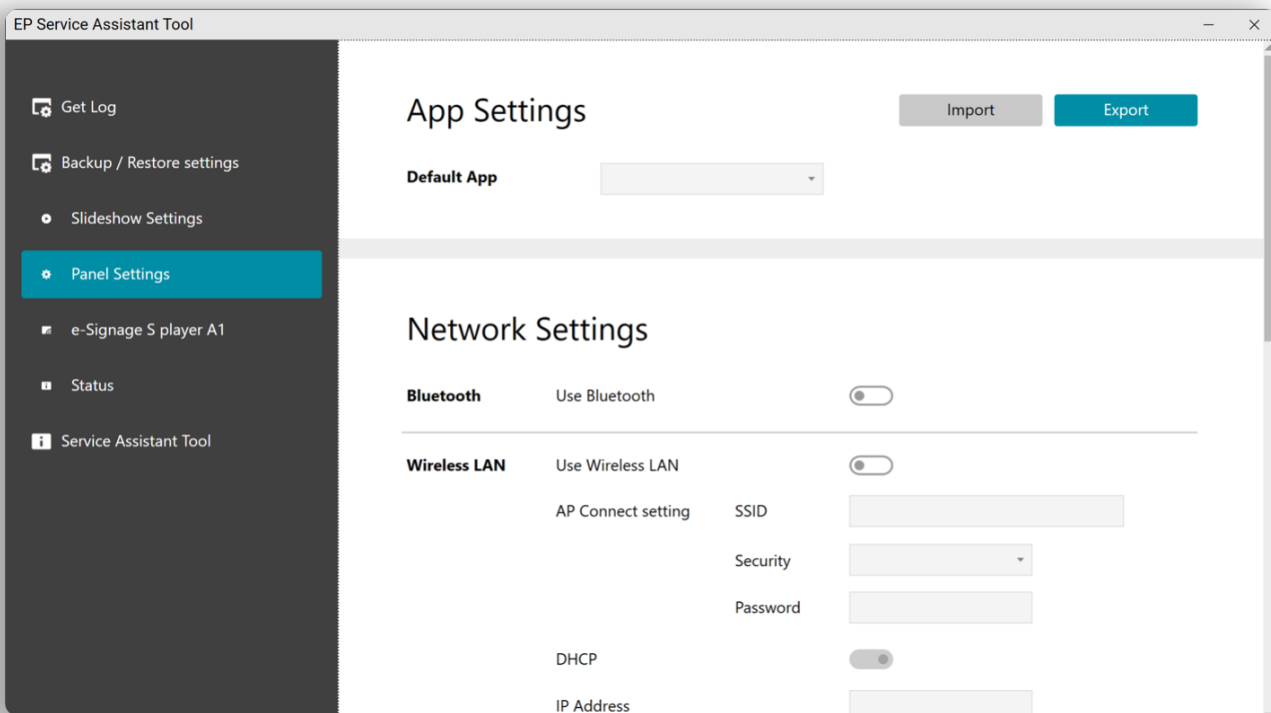
Open the Configuration-system-setting-default.dat file with Notepad.



```
{
  "DefaultApp": "com.tpv.slideshow",
  "WiFiSetting": {
    "NetworkEnable": "on",
    "SSID": "",
    "Security": "",
    "PW": "",
    "DHCP": "on",
    "IPAddress": "",
    "Gateway": "",
    "SubnetMask": "",
    "DNS": ""
  },
  "BTSetting": "off",
  "Language": "",
  "NetworkTime": "off",
  "Date": "2023/01/01",
  "Time": "0:00",
  "Timezone": "",
  "PowerSaveMode": "off",
  "TemperatureMode": "off",
  "KeyLockEnable": "off",
  "USBportProhibit": "off"
}
```

Next to SSID, Security, and PW, enter the Wi-Fi credentials for the network where the screen will be located. Then, save the file and close the window.

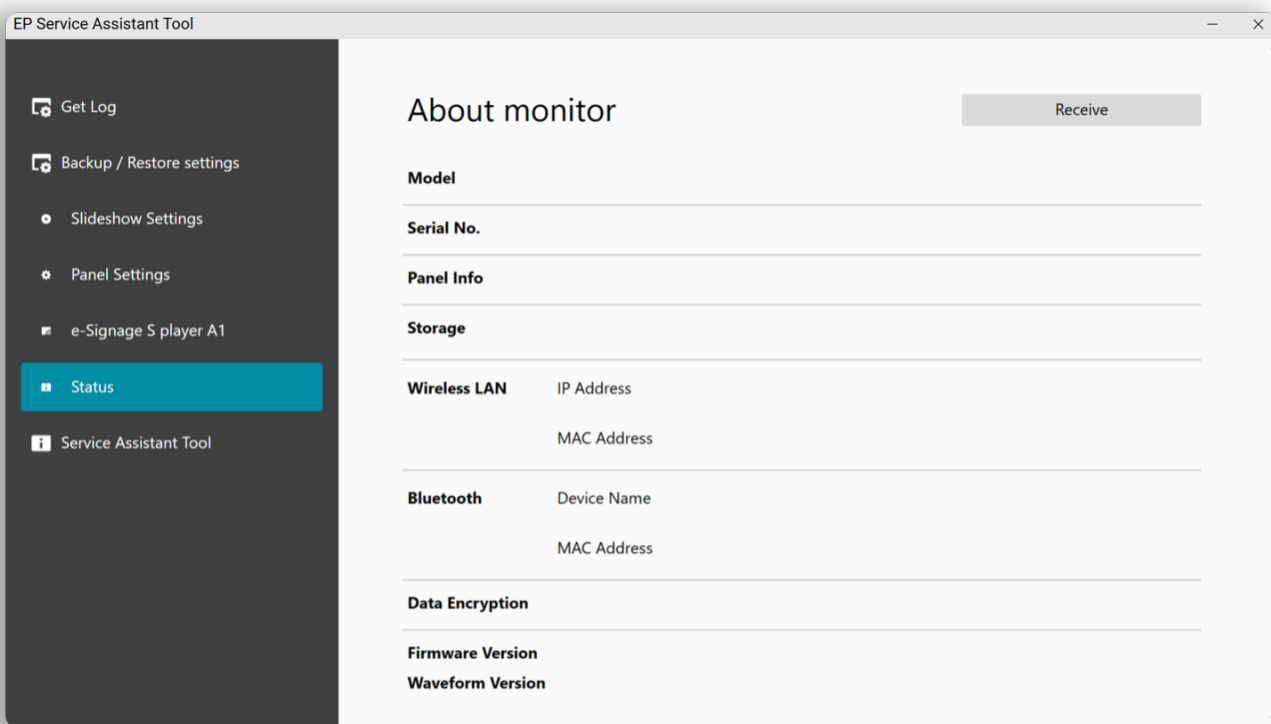
4. EP Assistant Tool



When Assistant Tool opens, go to the Panel settings tab and click Import. Then browse and select the modified file Configuration-system-setting-default.dat

Click Export (to the screen) in the same tab

Go to Backup/Restore settings > Status



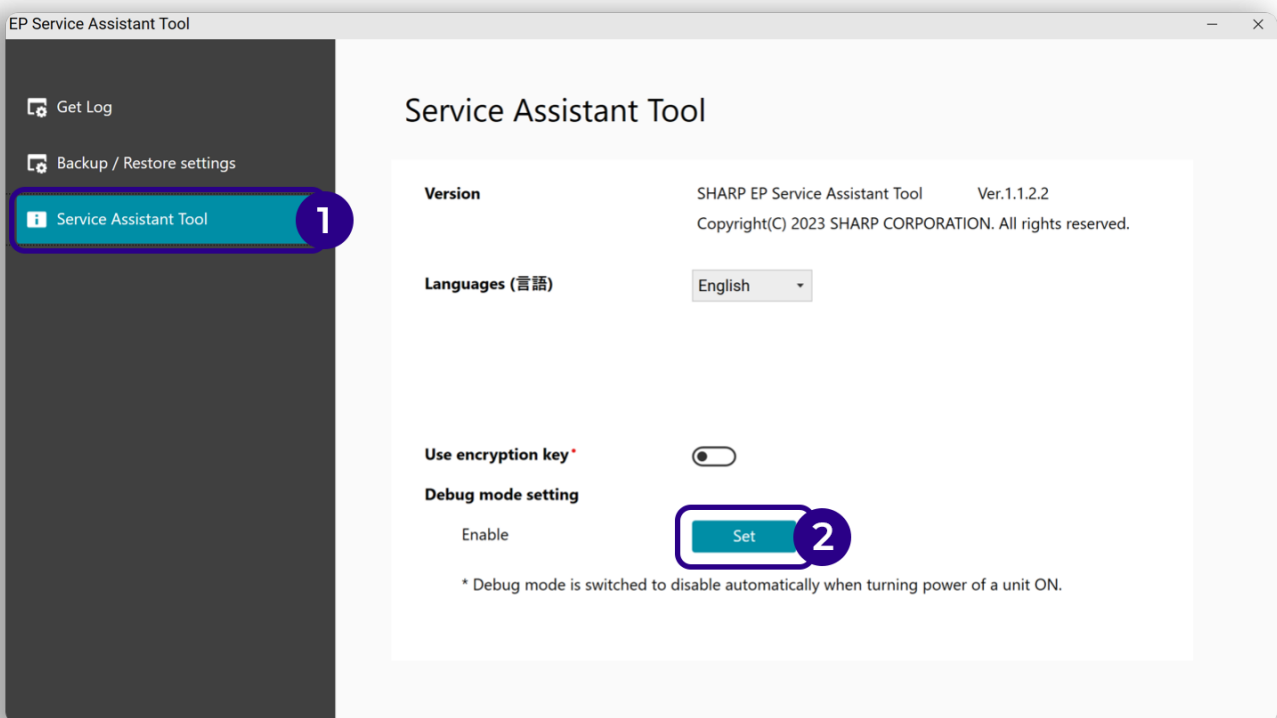
Click Receive to get device information



Note the IP address, it will be important for the zebrix signage app installation step

5. Enable debug mode (ADB)

Go to the Service Assistant Tool tab



Click Set to enable developer mode, then close the application

Step 2: Configure network and enable developer mode (Philips-specific)

See Step 3: If the device needs to use Wi-Fi, this will be done directly via the interface.

Otherwise, plug in an Ethernet cable: the connection will automatically configure to the network.

Step 3: Install and configure the “zebrix signage” app with ADB and Screencopy

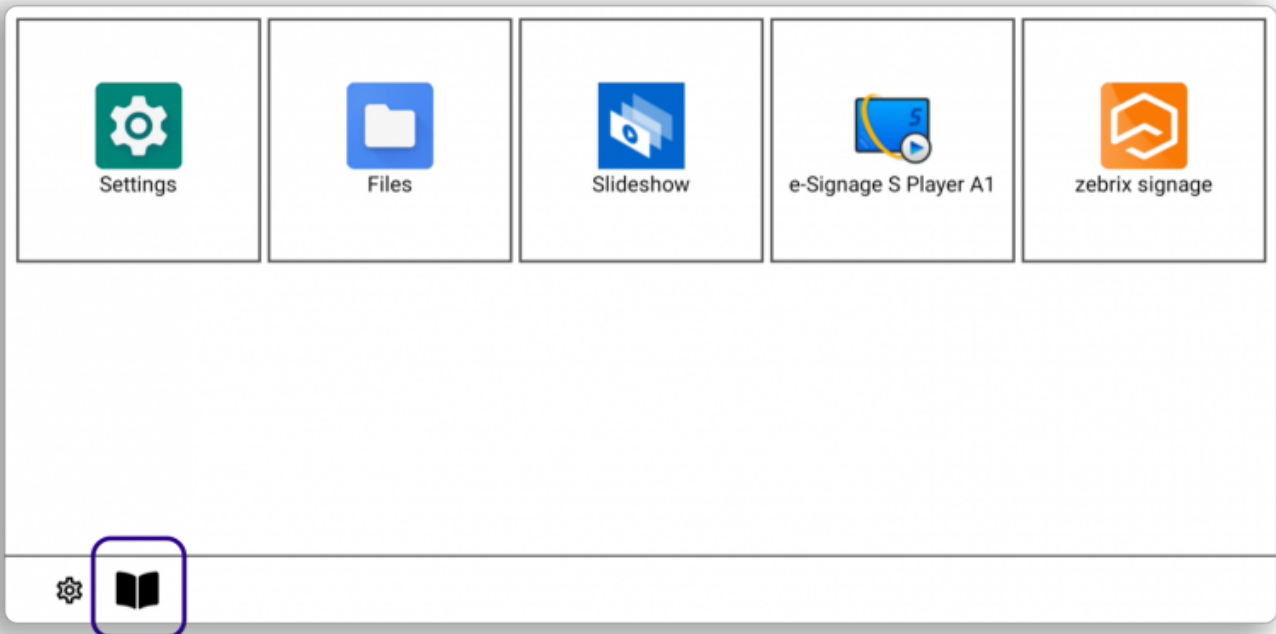
Run the “*einkinstall/win.ps1*” script from the Eink installation folder using a PowerShell terminal:

.\<einkinstallationfolderpath>\installeinkwin.ps1 <ipaddress> zebrix-signage-eink-latest.apk

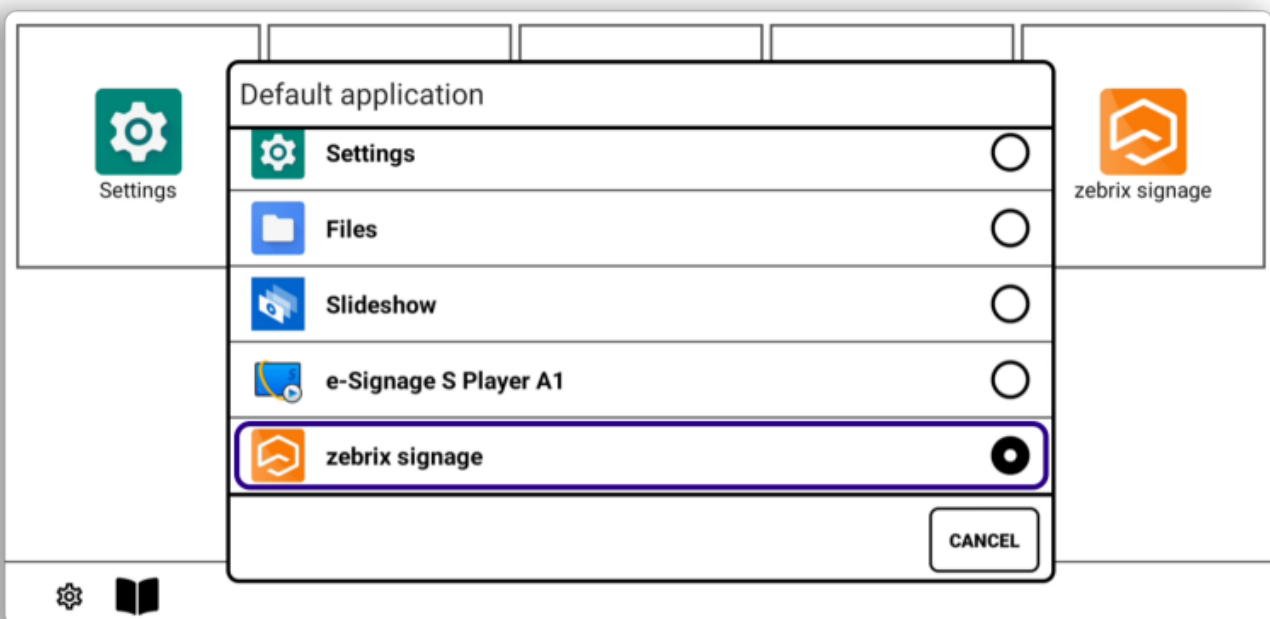
Step 4: Set “zebrix signage” as the default app

For Sharp:

Click the book icon at the bottom left via the device interface (Screencopy)



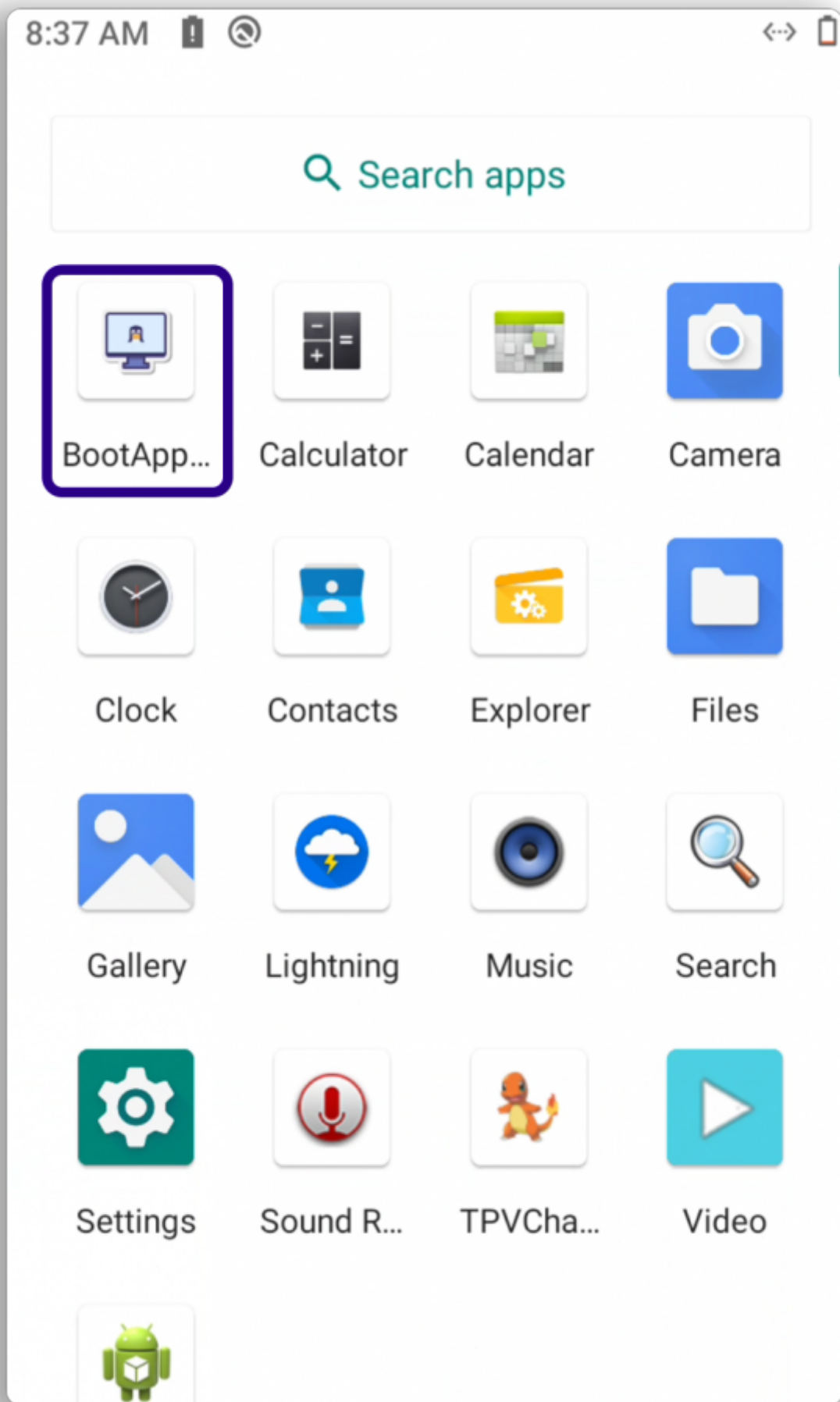
Click the “zebrix signage” app and close the popup



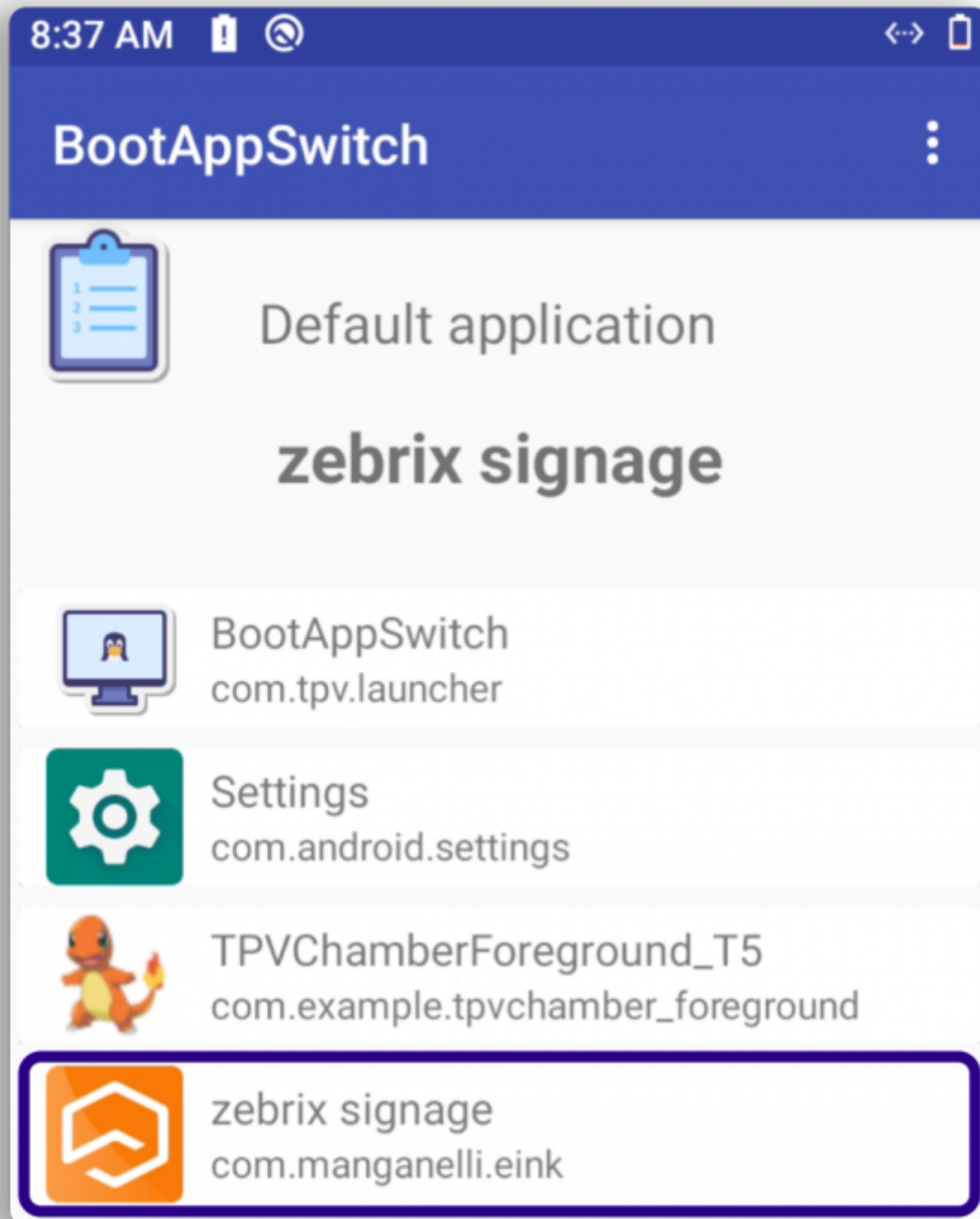
Launch the “zebrix signage” app from the home list

For Philips:

Click the “BootApp” app via the device interface



Choose "zebrix signage" as the default app

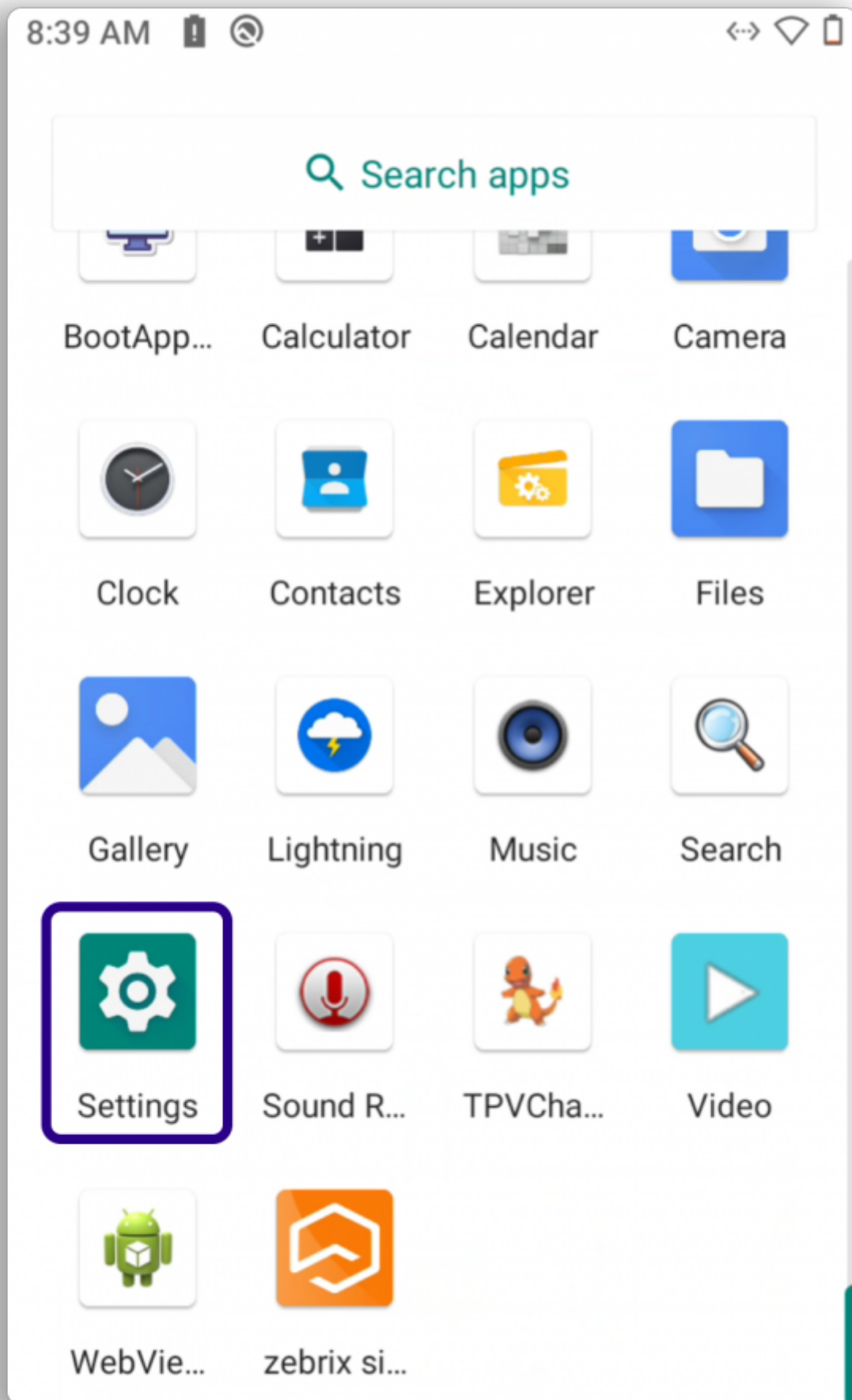


Go to the device apps and uninstall EPDApp (manufacturer recommendation)

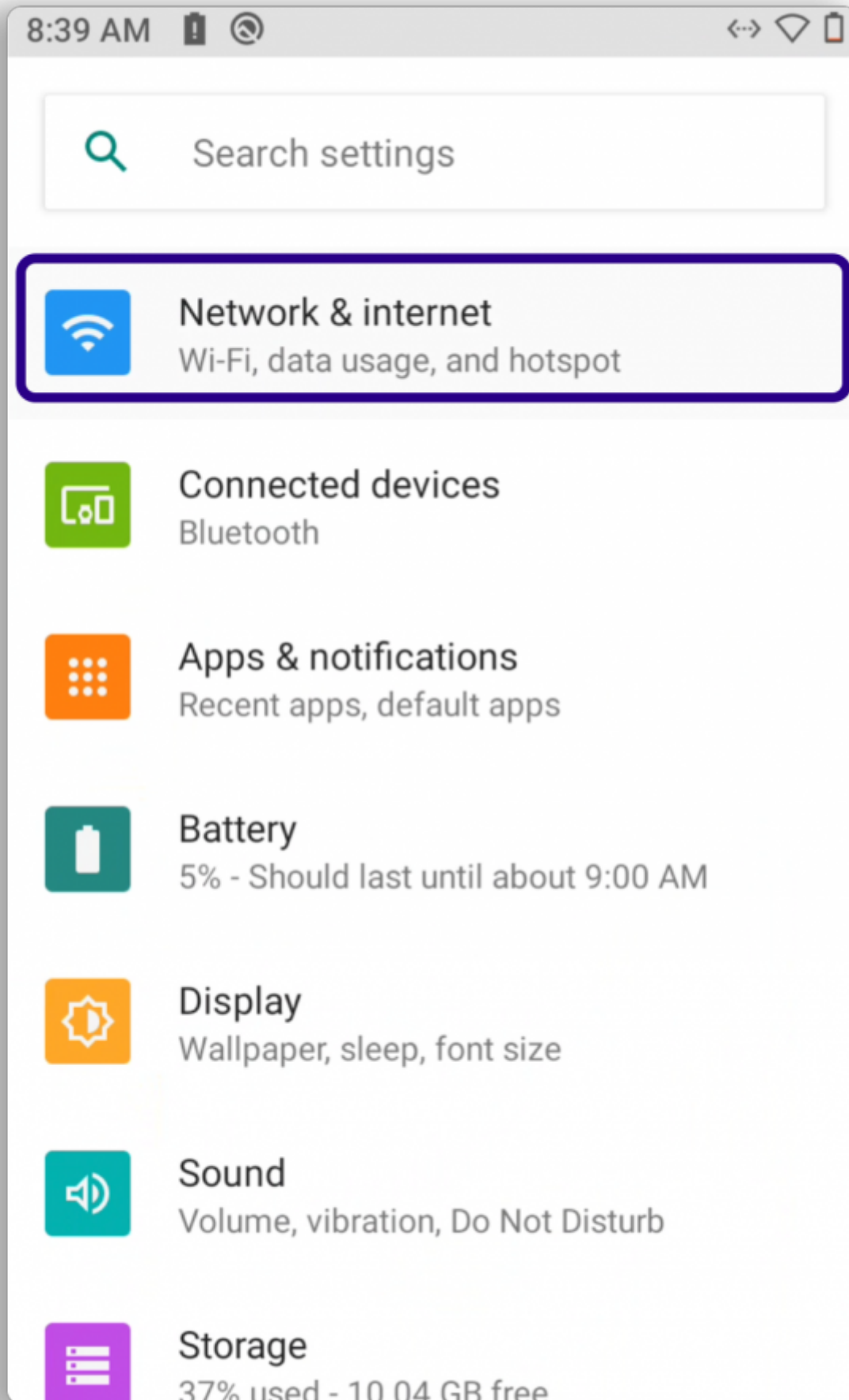
Return to the app list and launch "zebrix signage"

Step 5: Configure network (Wi-Fi) on Philips

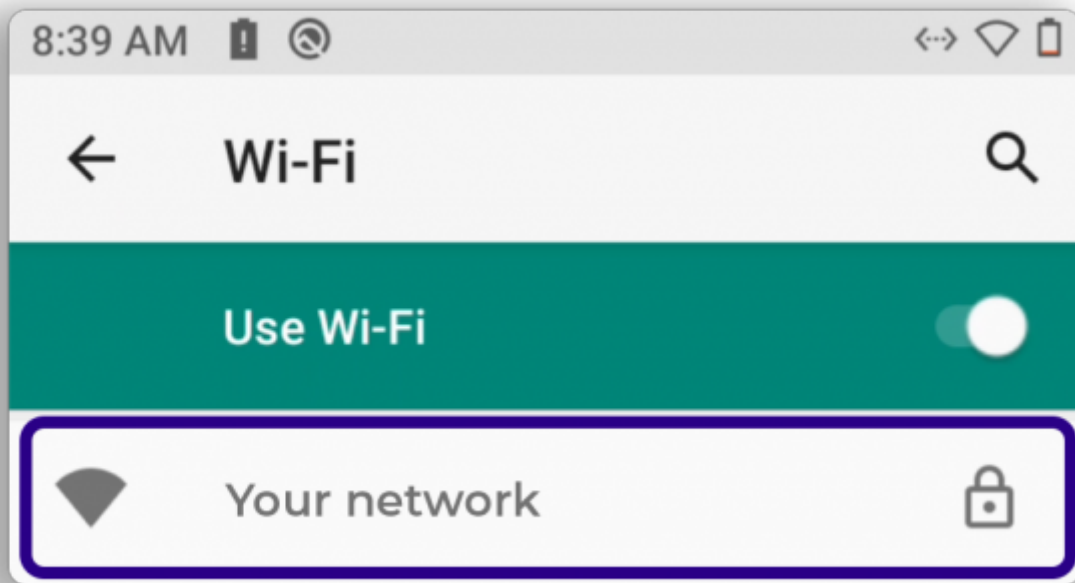
From the device interface (via Screenshot):



Go to Settings

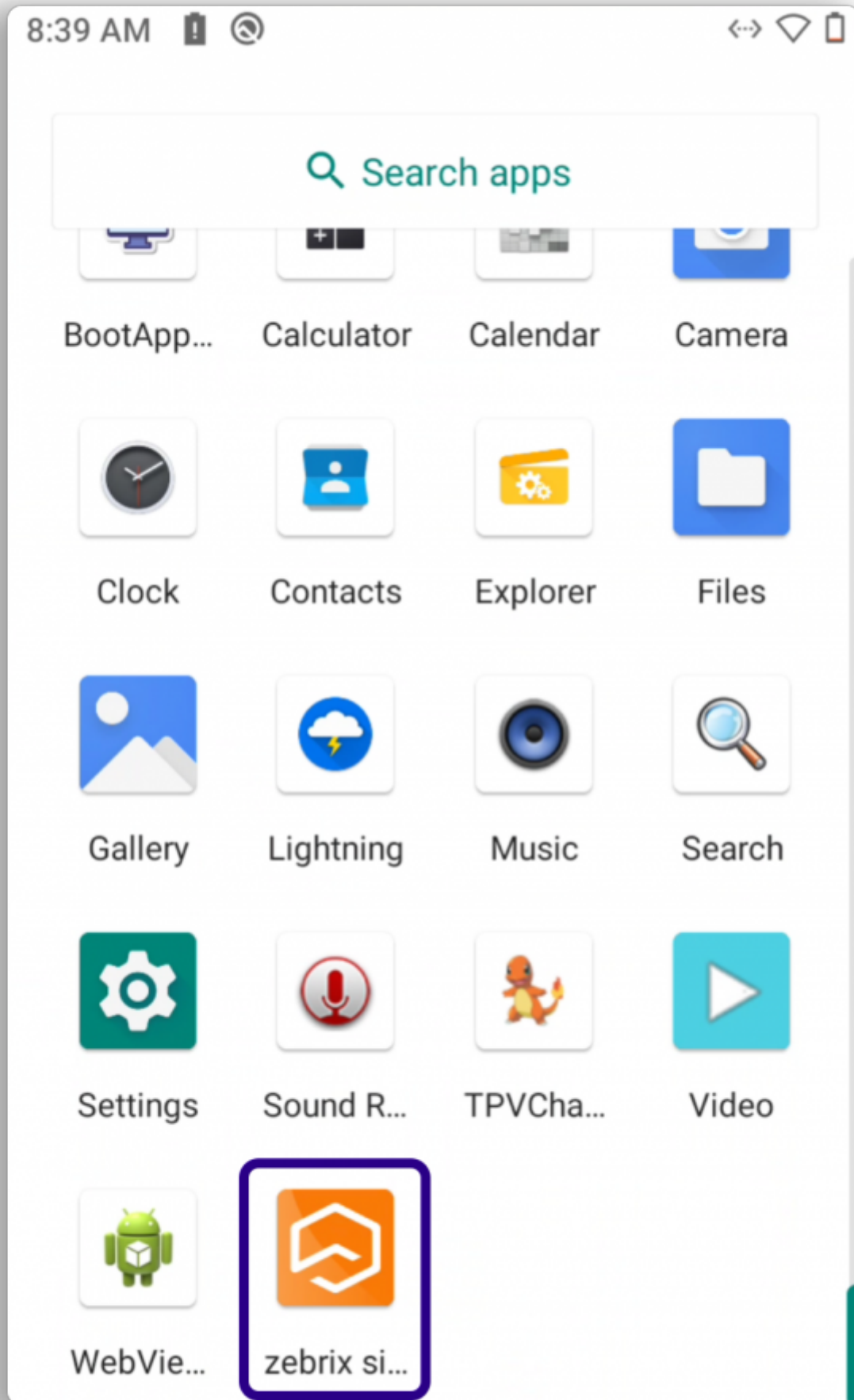


Then Network & Internet



And select the associated network.

Return to the app list and launch “zebrix signage”



Information section

1. Open PowerShell as administrator:

Click Start > type PowerShell > Run as administrator

Allow script execution: Type the following command and press Enter:

```
Set-ExecutionPolicy RemoteSigned
```

If a confirmation message appears, type Y (for Yes) and press Enter.

2. Reset a Sharp screen:

Unplug all USB-C cables (power and ADB)

Hold the Pairing button and insert the power USB-C cable

Keep holding the Pairing button until the red LED blinks

3. How to launch Screencopy to access the user interface

Open a PowerShell terminal

Connect to the screen via ADB:

```
adb connect <ip_address>:5555
```

Run the command:

```
scrcpy
```

From:

<https://documentation.zebrix.net/> - **zebrix documentation**

Permanent link:

https://documentation.zebrix.net/doku.php?id=en:comment_deployer_un_ecran_eink_android_sous_zebrix

Last update: **2025/10/21 11:01**

