

Configuring a Zebrix player with fixed IP addressing

Prerequisites: Keyboard and mouse

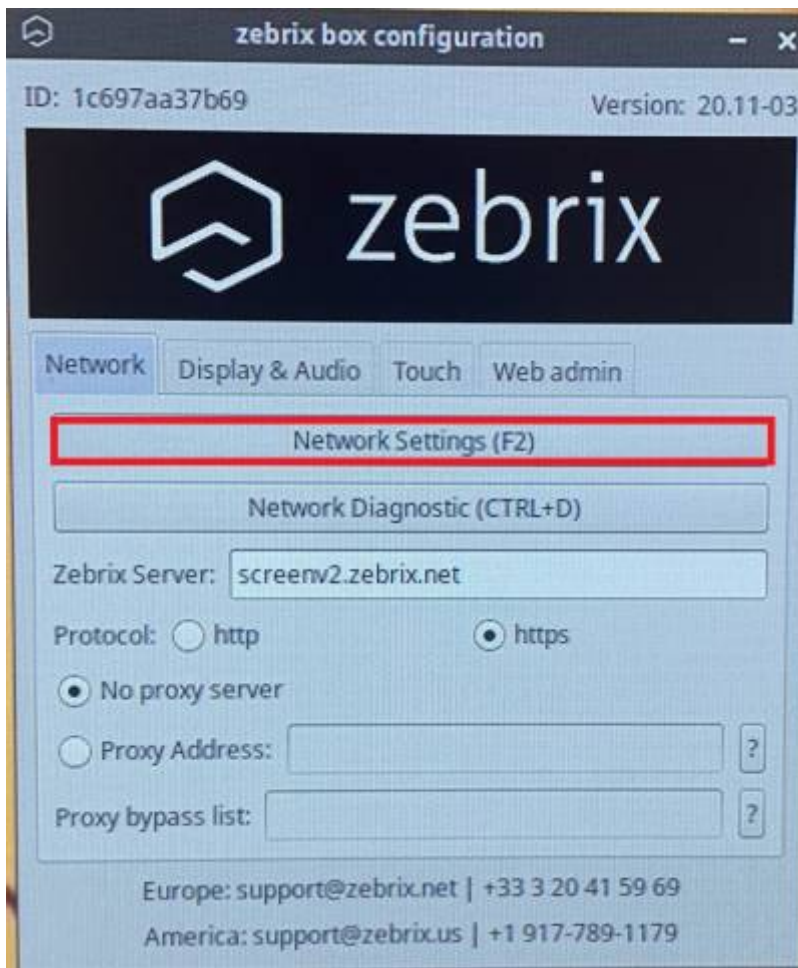
Step 1: Enter configuration

- Turn on the player
- Connect a USB keyboard and mouse (optional, but recommended) to the zebrix player.
- Press the “F1” key to enter the “zebrix box configuration”. If your keyboard has an “FN” key (bottom left), you may need to do “FN” + “F1”.



Step 2: Enter the network parameters

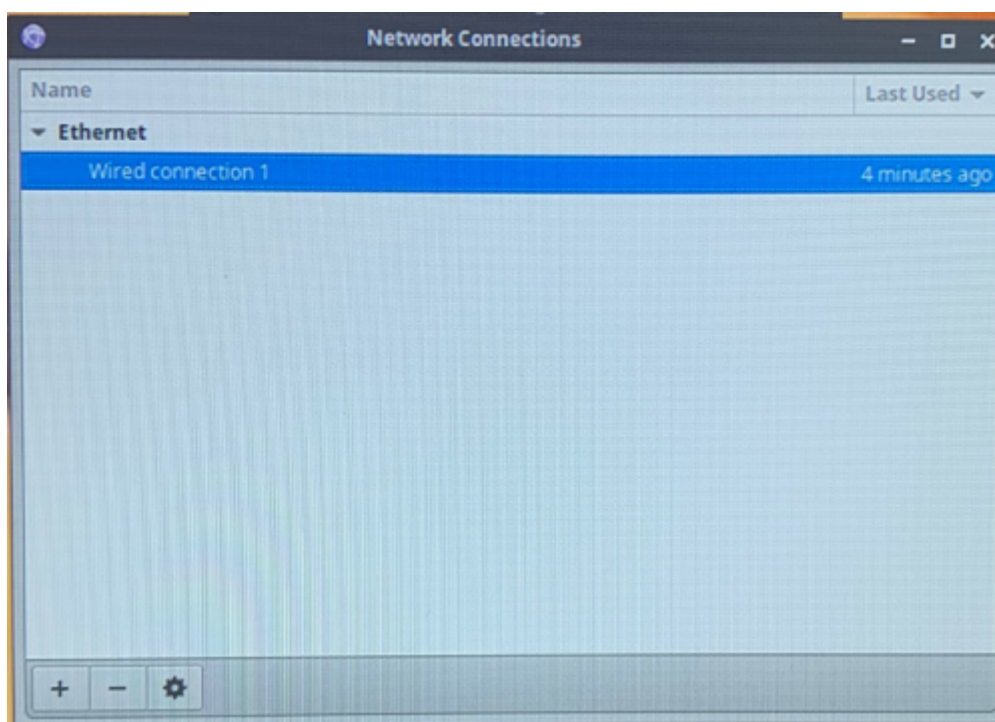
Press the “F2” key to access the network parameters.



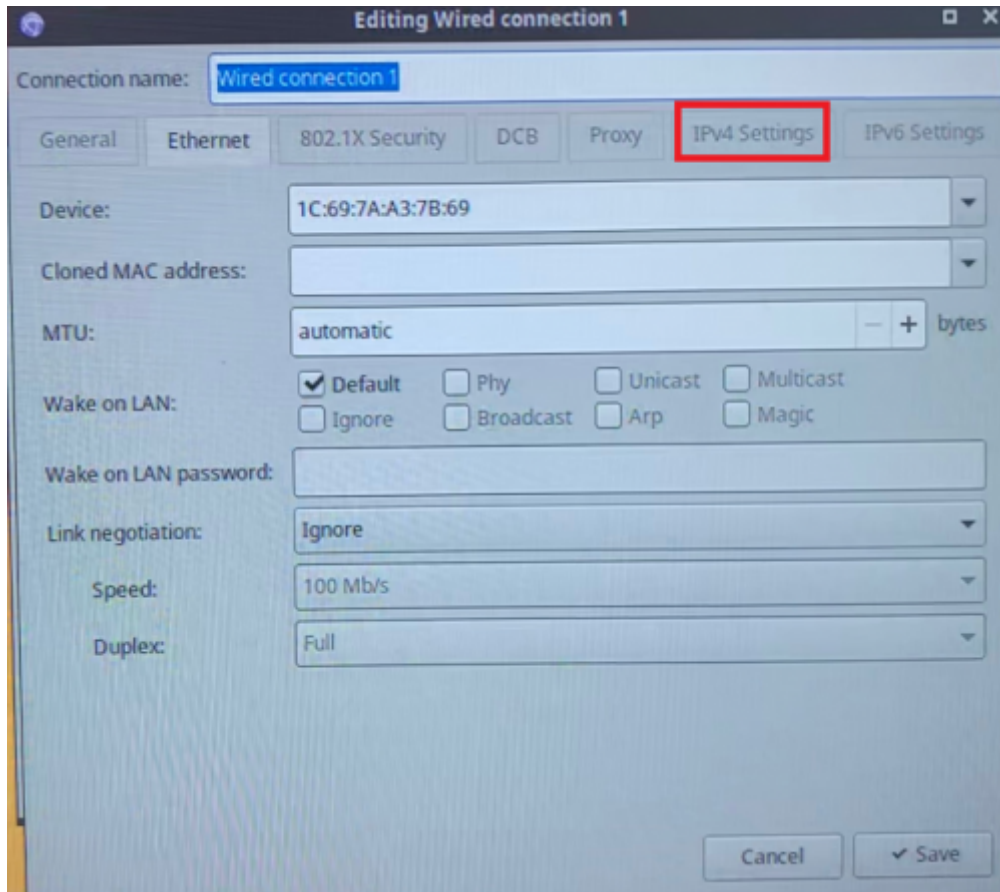
Step 3: network settings

Once in the network settings :

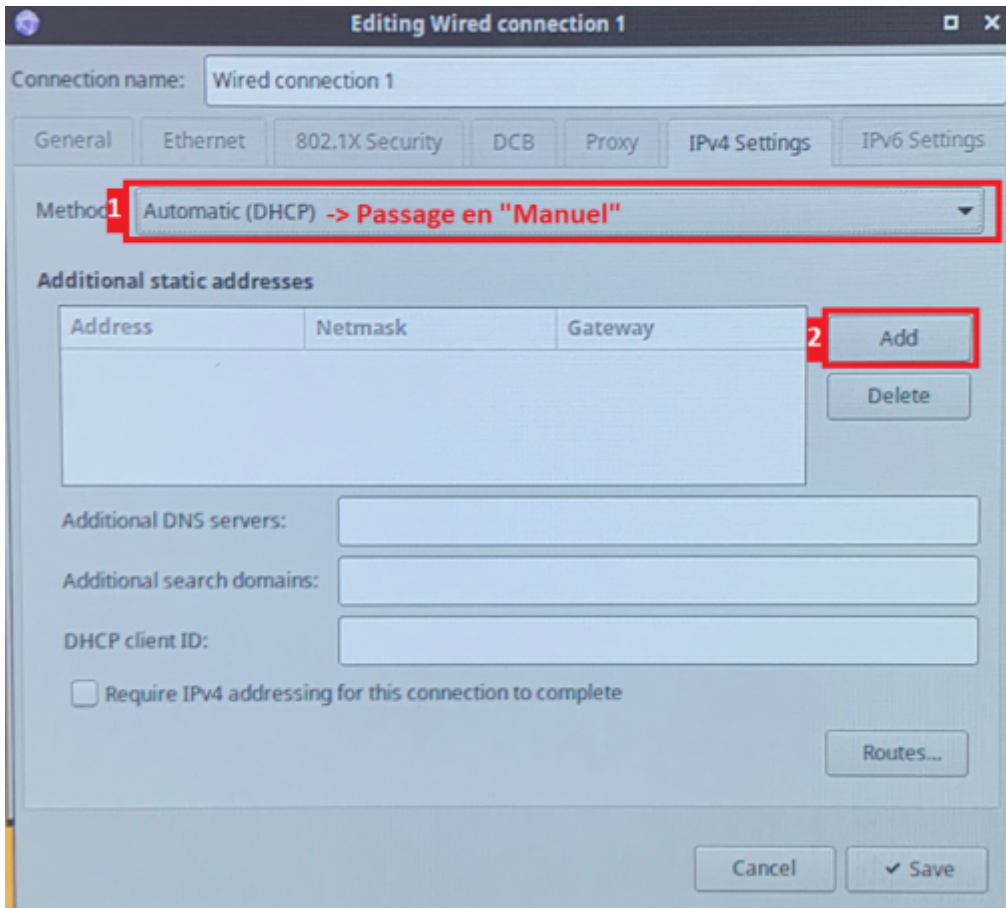
- select "Wired Connection 1" (or Wireless if connected by wifi) then "edit".



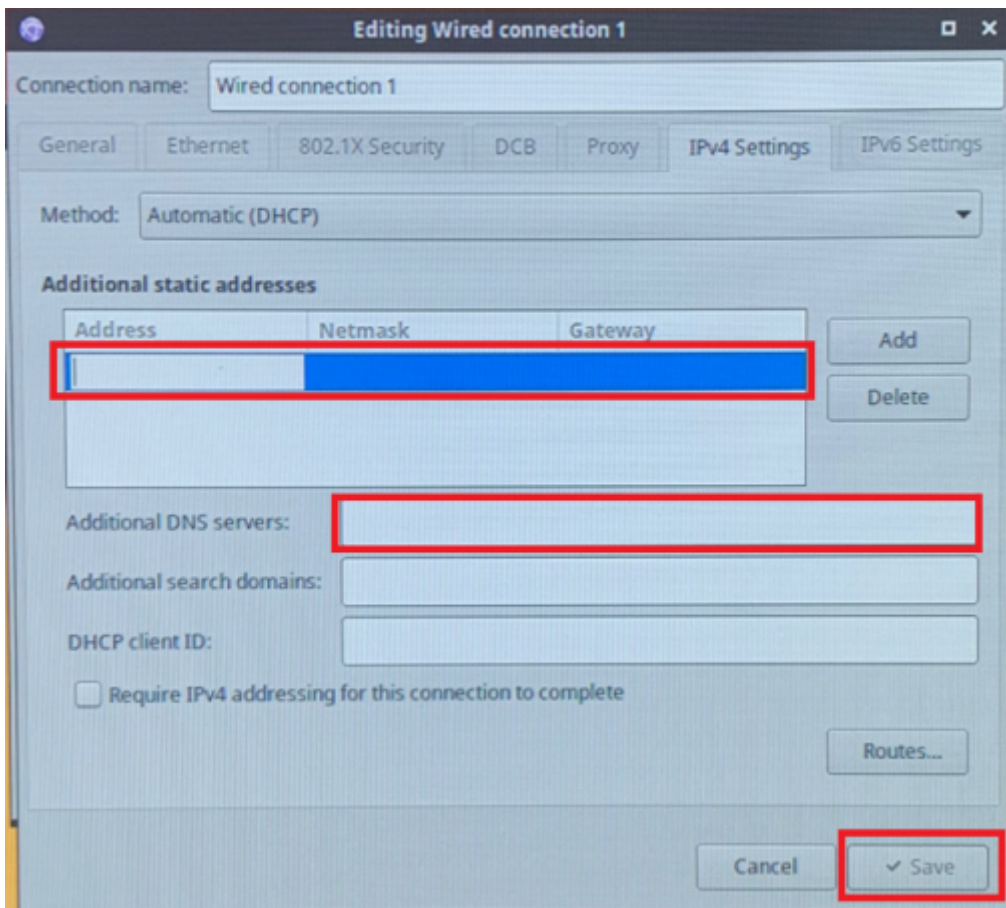
- Go to the "IPV4 Setting" tab



- Set "Method " to "Manual " then click "Add "



- enter the fixed IP setting.
- Click on the "Save" button



From:

<https://documentation.zebrix.net/> - **zebrix signage documentation**

Permanent link:

https://documentation.zebrix.net/doku.php?id=en:configuration_ip_fixe_nuc

Last update: **2022/04/27 07:50**

