

Configuring a Zebrix player with fixed IP addressing

Step 1: Enter configuration

- Turn on the player
- Connect a USB keyboard and mouse (optional, but recommended) to the zebrix player.
- Press the “F1” key to enter the “zebrix box configuration”. If your keyboard has an “FN” key (bottom left), you may need to do “FN” + “F1”.



Step 2: Enter the network parameters

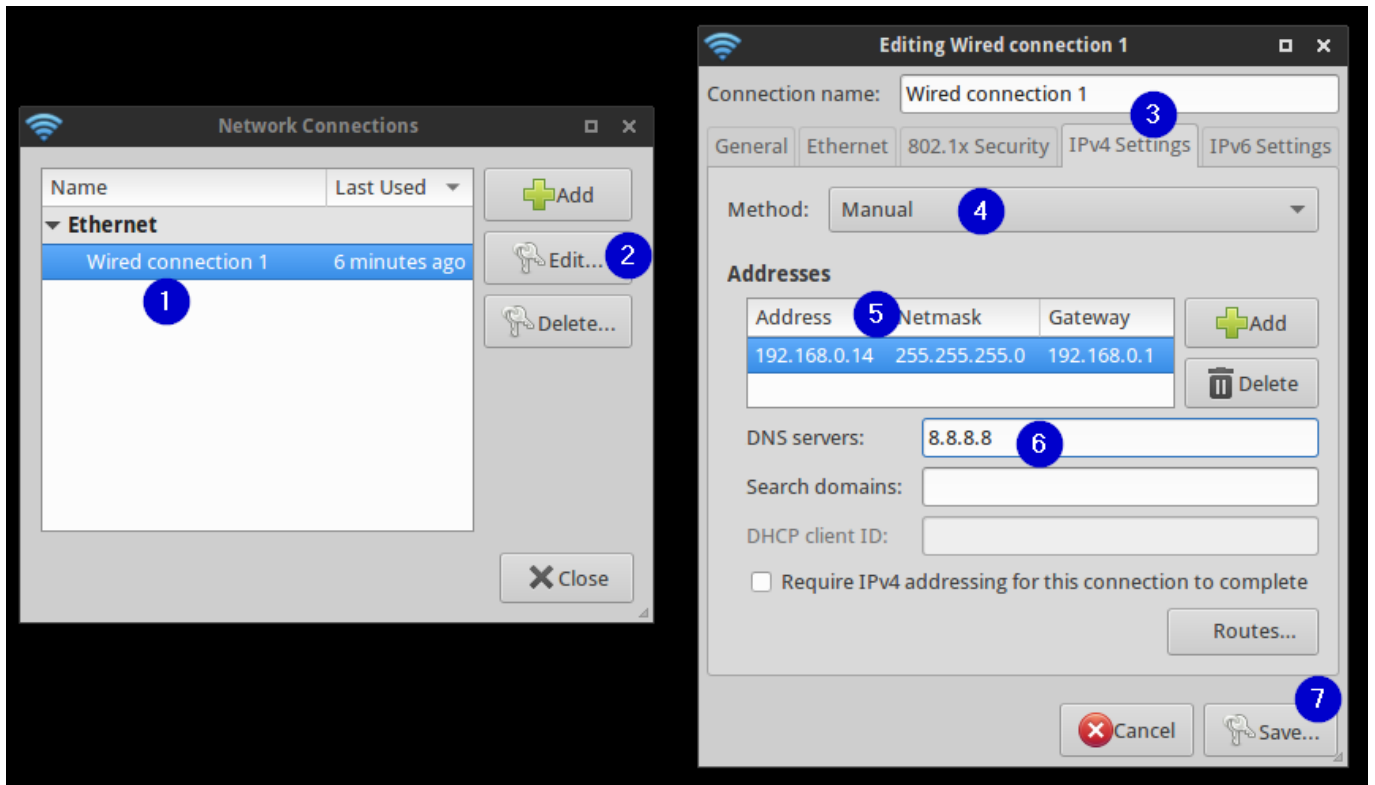
Press the “F2” key to access the network parameters.



Step 3: network settings

Once in the network settings :

- select "Wired Connection 1" (or Wireless if connected by wifi) then "edit".
- Go to the "IPV4 Setting" tab
- Change "Method" to "Manual".
- Click on "Add" then enter the fixed IP setting.
- Click on the "Save" button



From:
<https://documentation.zebrix.net/> - **zebrix documentation**

Permanent link:
https://documentation.zebrix.net/doku.php?id=en:configuration_ip_fixe_nuc&rev=1649399934

Last update: **2022/04/08 08:38**

