

# Using datasources in Zebrix

Zebrix lets you use data sources within your pages. This way, instead of manually entering the content in your zones, the contents are synchronized from a data source.

## 1. How does it work ?

Your existing data sources (databases, data from a webservice, CSV export, etc.) can be synchronized with the server zebrix periodically (every X minutes / hours) or at an event. Once zebrix detects that these data changes, it updates the contents of screens instantaneously.

## 2. How to synchronize data to zebrix ?

There are two ways to synchronize your data with zebrix:

- The “Zebrix Connector” program (currently in beta version) is the easiest solution.

There is no costs related to a specific development. While responding to the case of the most common usage, the Zebrix Connector includes certain limitations.

- The development of a specific synchronization program is the most flexible and efficient solution but generates a cost and development delay to be taken into consideration.

This development can be supported by the development team Zebrix or by any developer which has the “how to use the zebrix API” explanation.

### 2.1 Usage of the "Zebrix Connector"


The Zebrix Connector is a software solution for synchronizing data on Windows easy to learn and consists of two applications:

- **A configurator:** allowing you to easily define your “Data Links” and specify the data to be synchronized by applying filters and conditions.
  - \* **A Windows service:** runs in the background as a service and ensures data synchronization based on the “data link” that have been configured.

Synchronization is initiated either on the basis of a specified interval (every X seconds / minutes / hours) or on the basis of the detection of a change of data (only with file oriented databases (csv, xls)). Zebrix Connector must be installed on a Windows computer (server or workstation) with access to the source database and ODBC on which a link has to be created. The Zebrix Connector is in theory compatible with any type of database for which a 32 bits ODBC driver exists for Windows.



Warning, zebrix connector is only compatible with **32 bits**

 **SYSTEM DSN** ODBC links. Please use the Microsoft 32 bits ODBC software version you will find at the following path:  
**C:\Windows\SysWOW64\odbcad32.exe**

Zebrix team has already tested:

- CSV
- XLS (Microsoft Excel)
  - \* MDB (Microsoft Access)
  - \* MySQL
  - \* PostgreSQL
  - \* Microsoft SQL Server
  - \* Oracle

For servers with GNU / Linux, Mac OS, Unix or other operating systems or data source, the Connector Zebrix is not available and the development of a specific connector is required.


## 2.2 Development of a specific synchronization tool

The Zebrix development team is able to develop a specific connector that can retrieve data from your information system and synchronize it to Zebrix. For information about this, please take contact with your zebrix dealer or zebrix support [support@zebrix.net](mailto:support@zebrix.net)

Frequently Requested for a specific development:

- CSV export, XML export, export JSON
  - \* MySQL on Linux or Unix
  - \* PostgreSQL on Linux or Unix
  - \* Data files from a web server, FTP or Web services

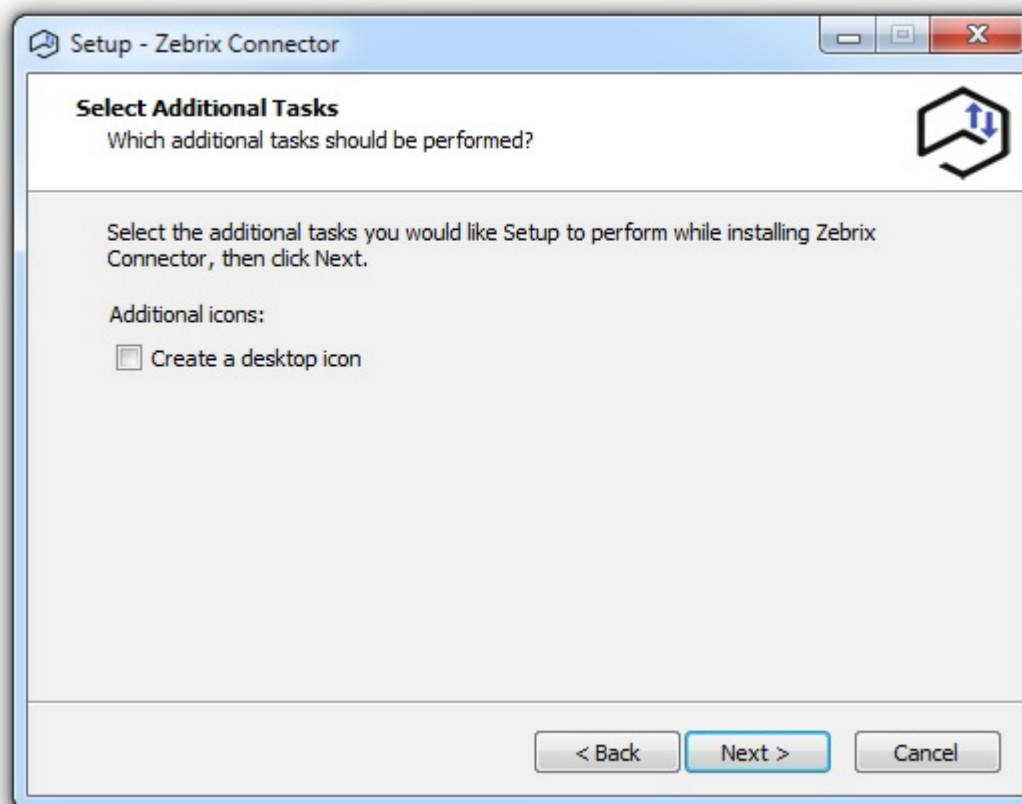
## 3. How to install the Zebrix Connector ?

Start the setup  Setup Zebrix Connector.exe . Please follow instructions:

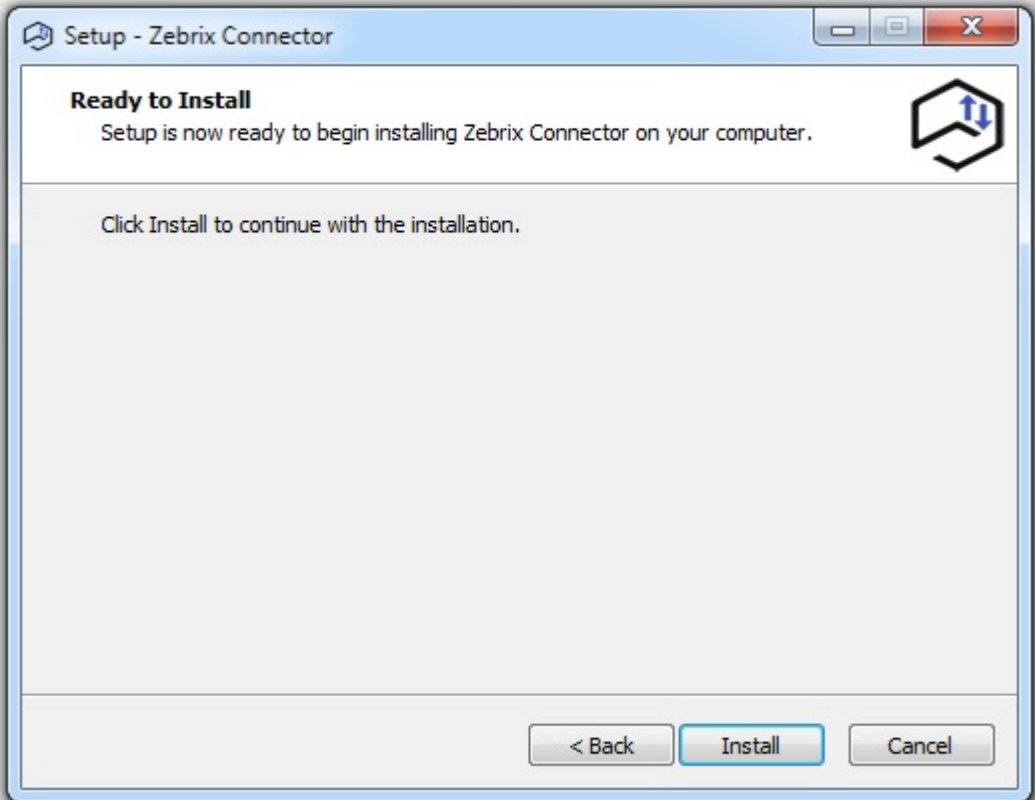
- Start of the installation - click next



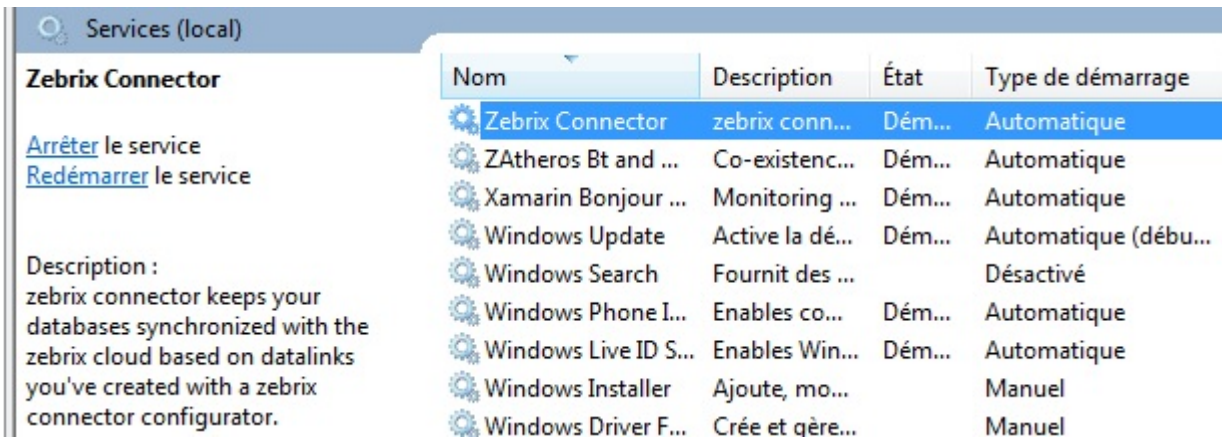
- At this step you can choose to add a shortcut on your desktop




- Click on install and it's done !



Folder “ZebrixConnector” will be created in the root of C: with all relevant files to the execution of software. You can verify that the Windows service “Zebrix Connector” is present among the other services :

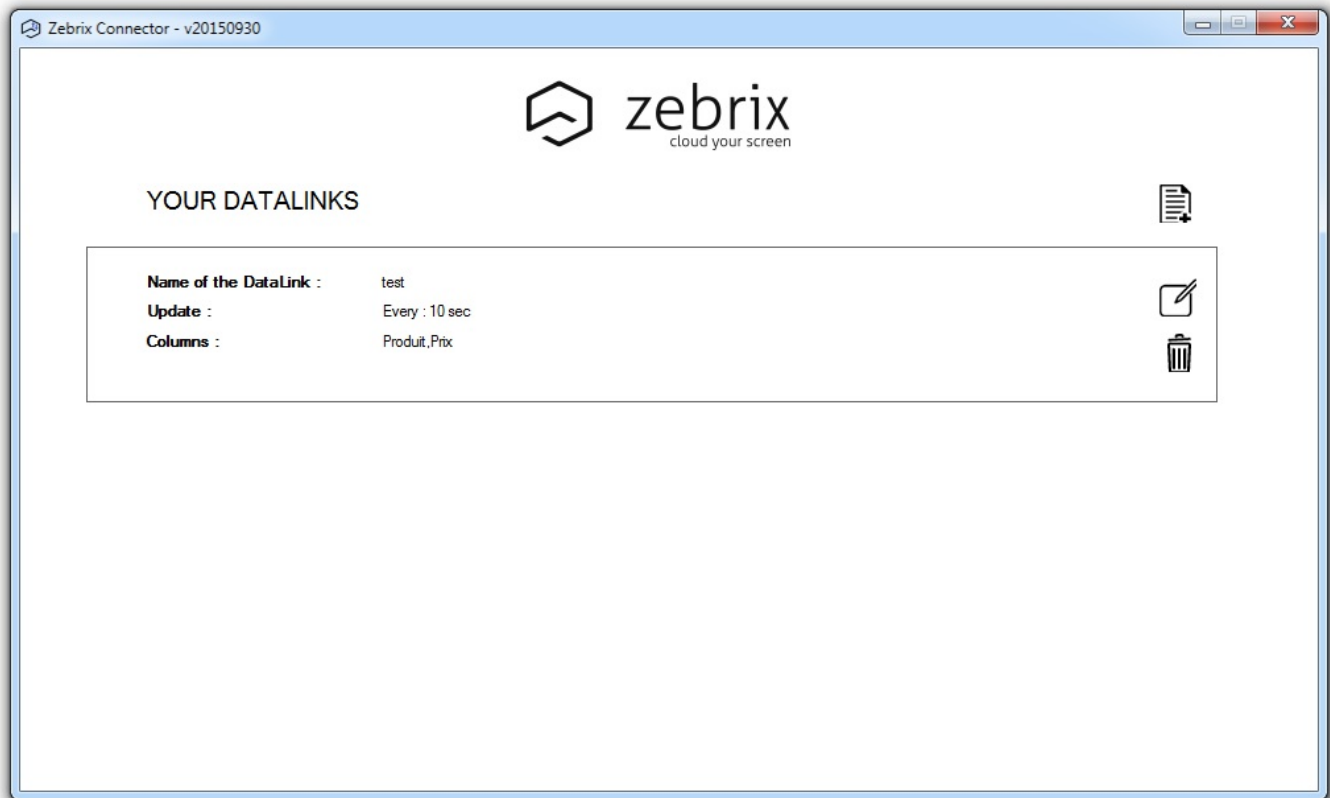


Start> Run> services.msc Select the service “Zebrix Connector” and click Start at the top left to start the service.

To start the configurator click on this icon 

## 4. Zebrix Connector startguide




### 4.1 homescreen



Here you can see all Datalinks created with Zebrix Connector and information about them:

1. Its name
  - Its update frequency
  - The names of columns you've chosen to synchronize

Icons description:

-  To create a new DataLink
-  To edit an existing DataLink
-  To delete a DataLink

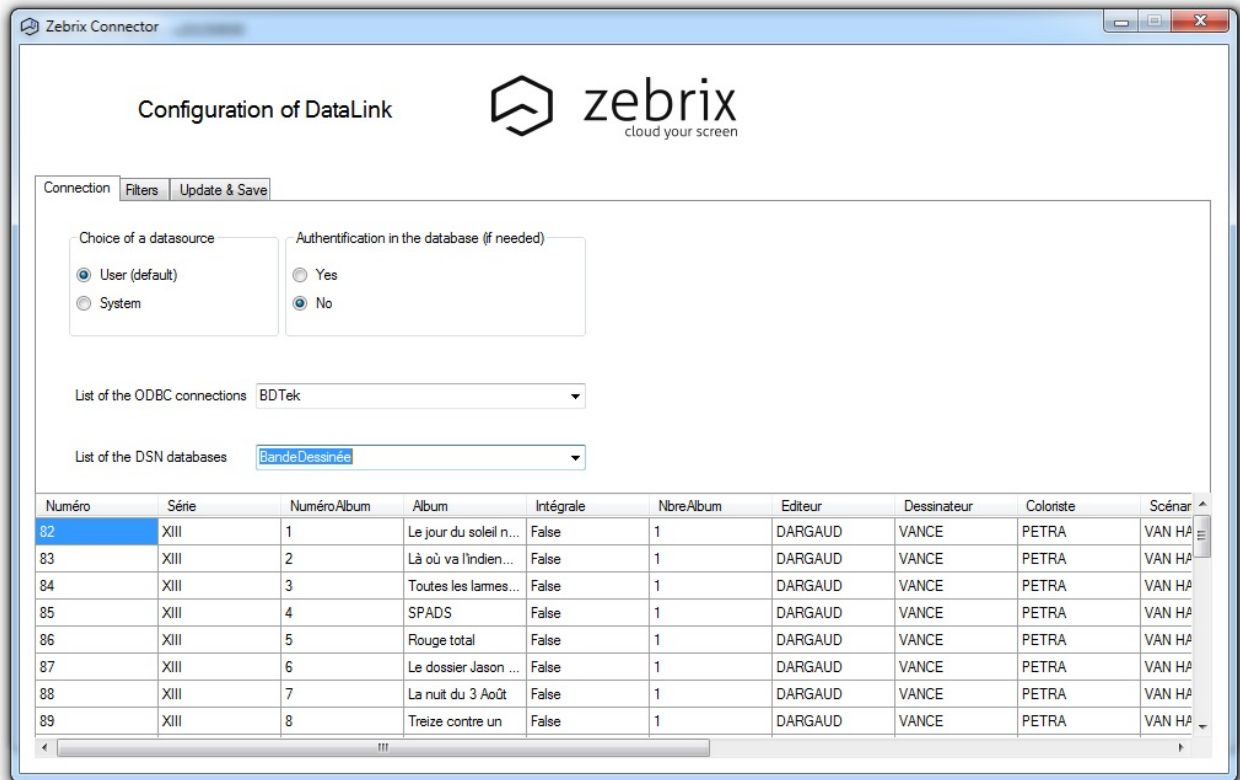
## 4.2 Steps for datalink creation

### 4.2.1 Connection

- Click on the datalink creation button.
  - First step: Specify the ODBC connection to the database and chose which table you want to get data from



- The connection is made via the ODBC driver previously created. It can be created in two different types:
  - User (User accessible only)
    - \* System (accessible by the system - best choice !)
  - \* The second option concerns the fact whether a login / password to connect to the database is needed
  - You can then choose the database and the table you want to use (screenshot below)

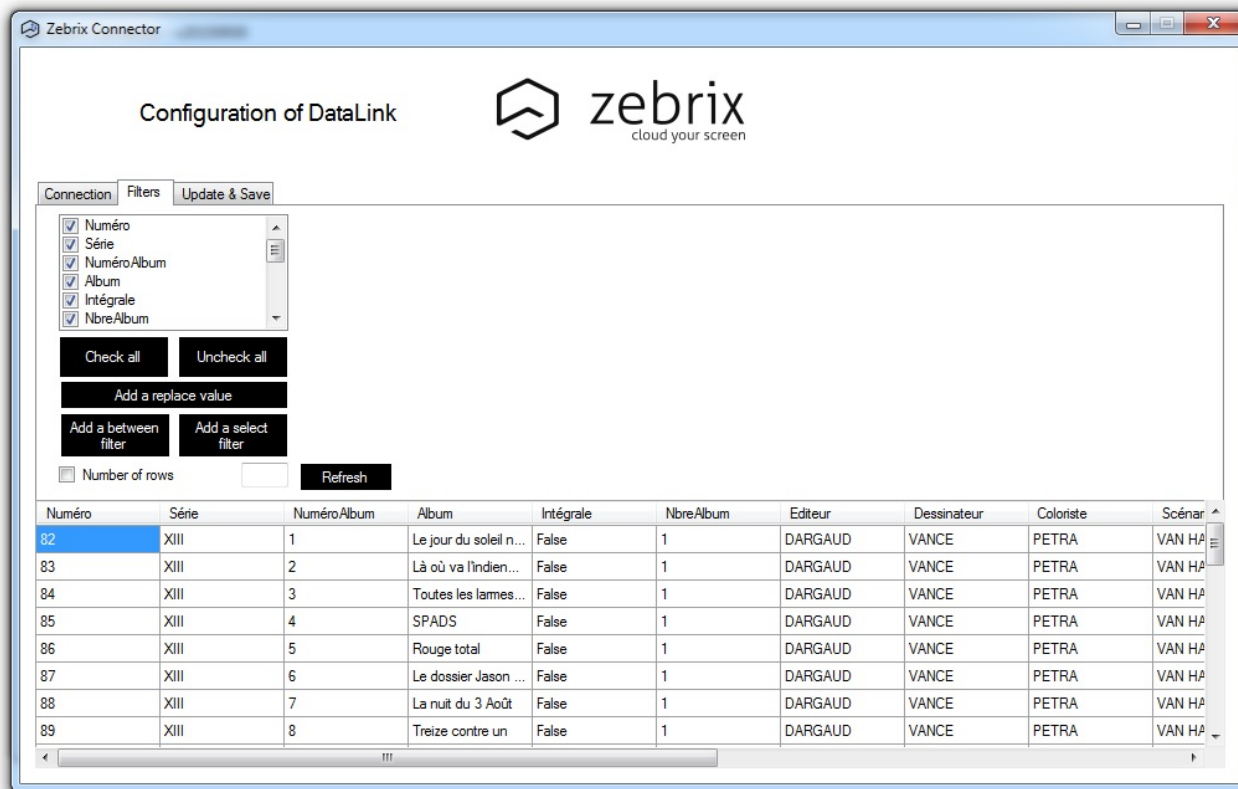


### 4.2.2 Filters

- After connecting, two tabs appear:
  - Filters

\* Update & Save

\* You can see on the screen below the various filters that can be applied on our table



- Different filters Check all / Uncheck all (just check / uncheck all) or so, we do not check that the relevant columns.
  - Number of rows (number of lines) which limits the result to a required number of lines
  - \* Refresh (Refresh) that visually update the table according to the filters applied
  - \* There are 3 advances filters:

\* Allows a given column select a range of values [ ] (between 1 and 3 in the following example)

Select columns  Value between  and  ✕

- Allow to filter by a value comparaison (>, <, =, <=, >= ) on a given column

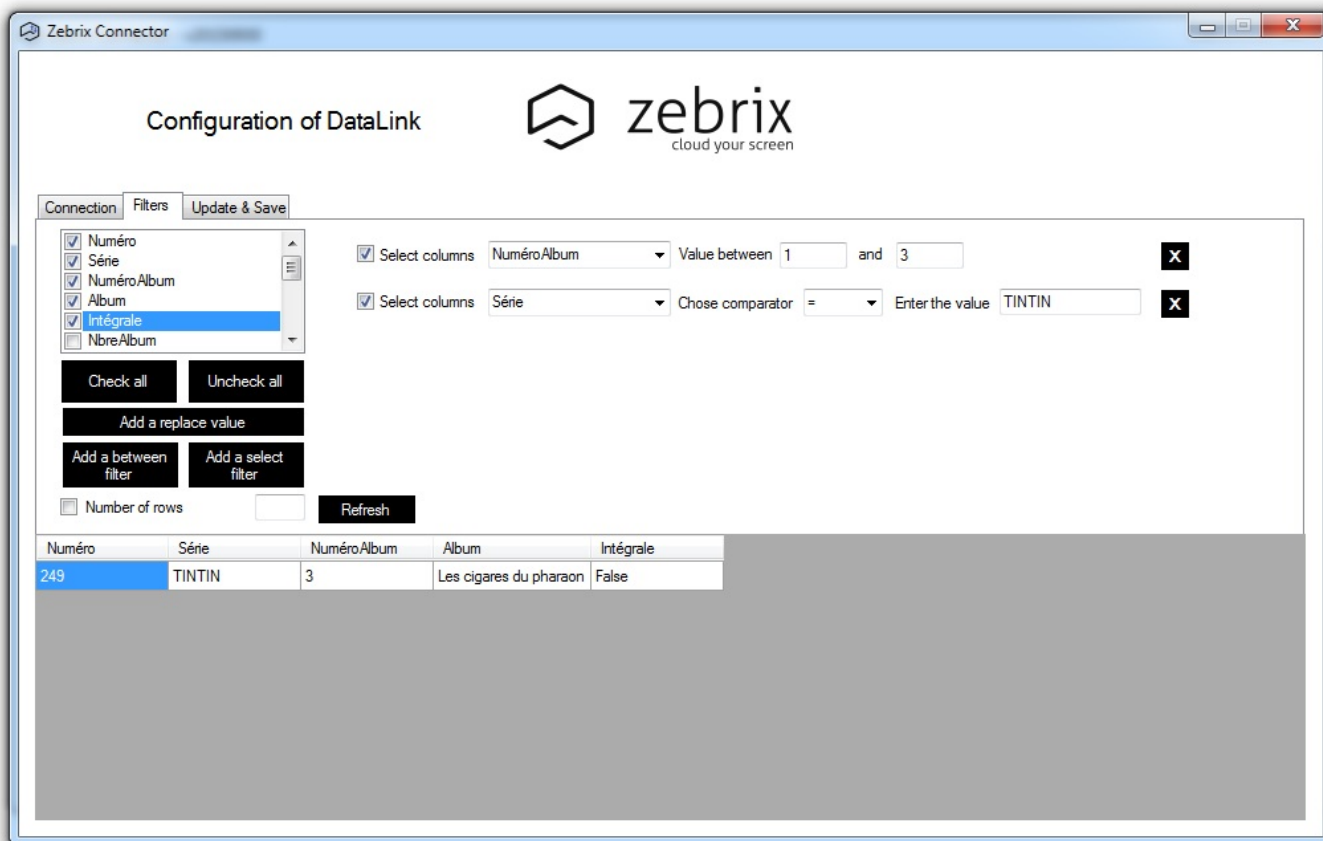
Select columns  Chose comparator  Enter the value  ✕

=  
 <  
 <=  
 >  
 >=

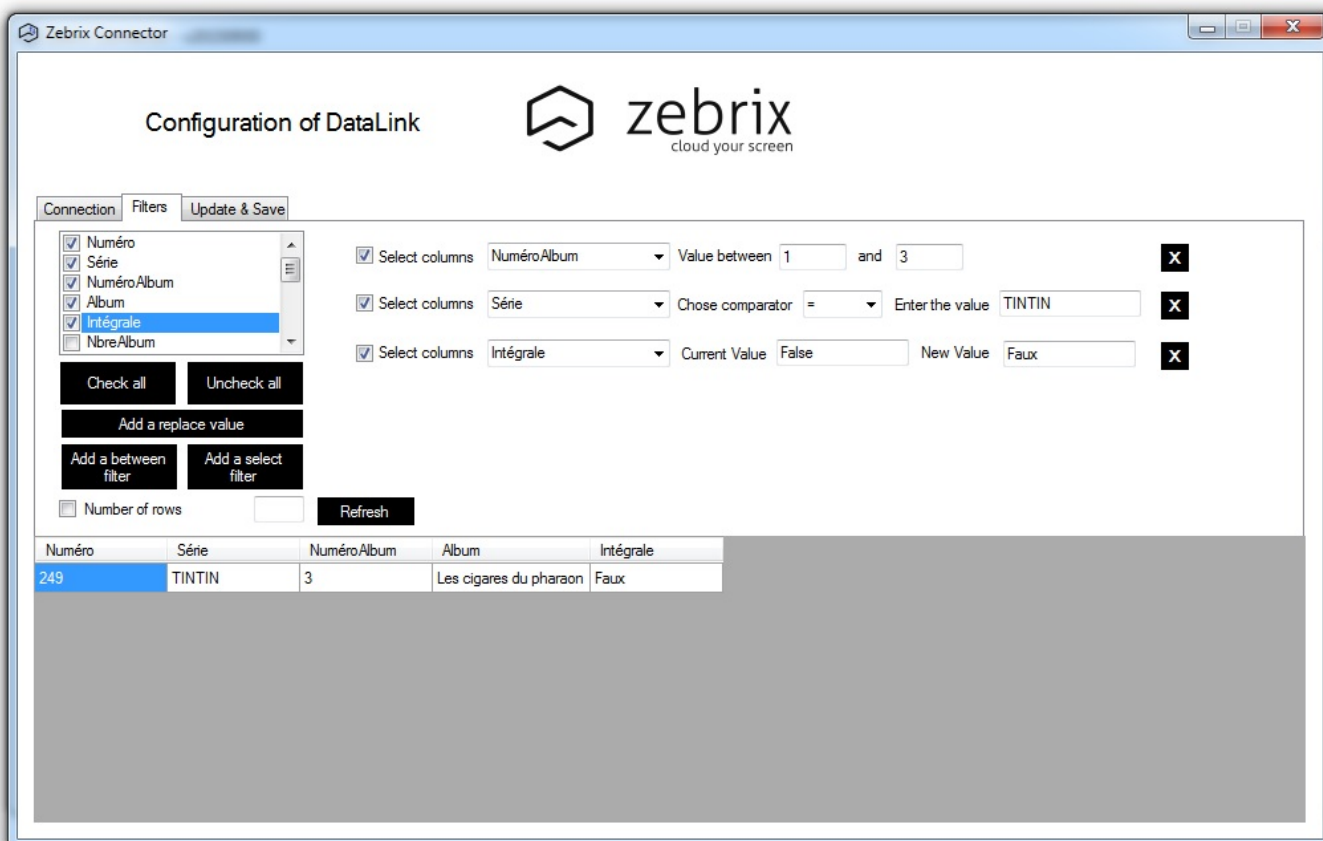
\* Allow to replace a given value (in the column of your choice) by another. For example this feature will allow you to replace a "True / False" boolean value by another text string such as "Open / Close" or "Available / Not available" you can also replace a stock value "0" to the "Out of stock" text. Please note that this would of course not change the data in your source database.

Select columns  Current Value  New Value  ✕

- In the following example, the filters “between” and “select” has been set up. We want the volumes that are between 1 and 3, and the name of the series is Tintin by displaying the first 5 columns.



- Next, we want to use the french word “Faux” instead of False, so we set up a “replace” filter



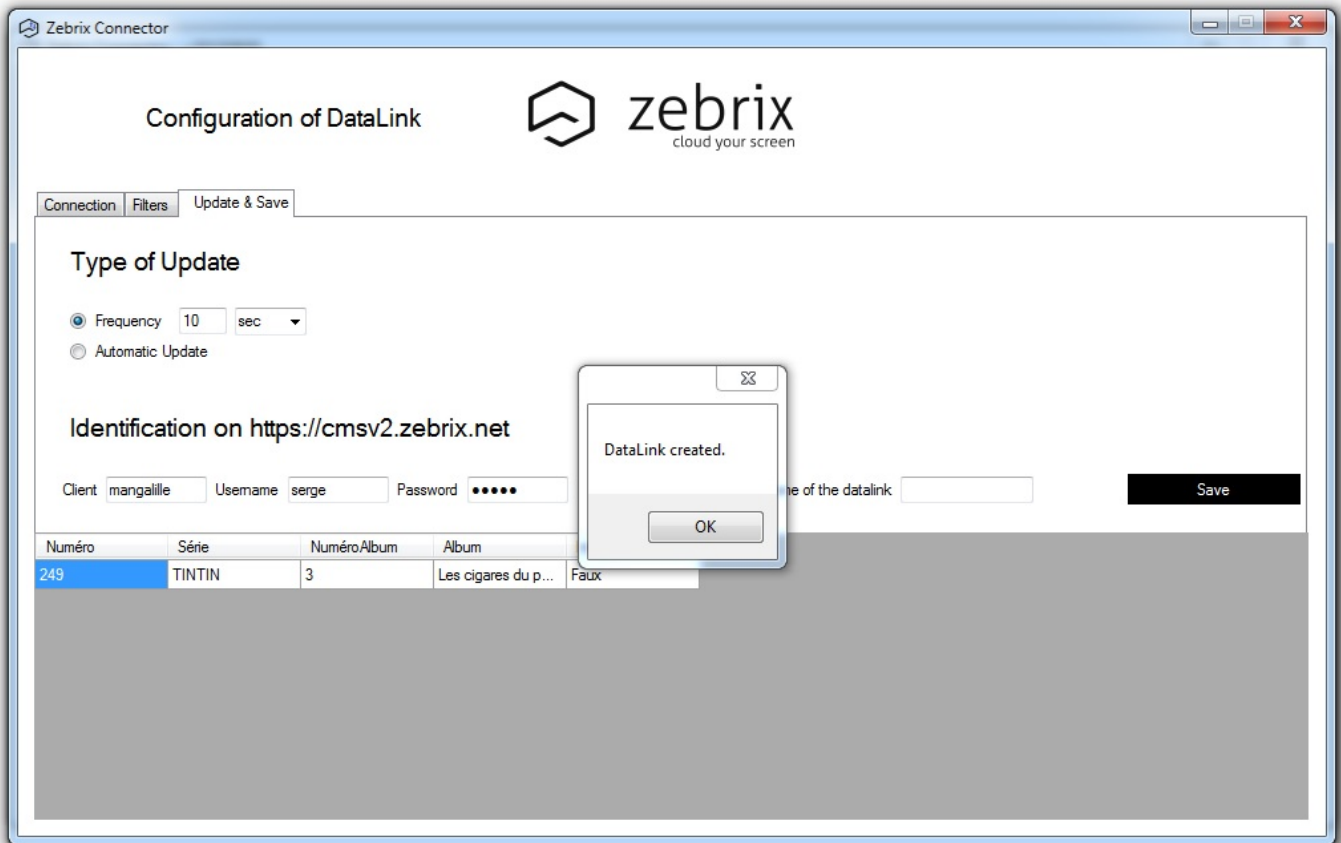
### 4.2.3 Interval of the data update and save of the DataLink

- On this page, you can choose the update frequency (automatic for file oriented databases (csv, xls)) in seconds, minutes or hours.
  - You must fill in your zebrix client name, username and password
    - \* You can choose the name of the datalink (it will appear with that name in the zebrix cms)

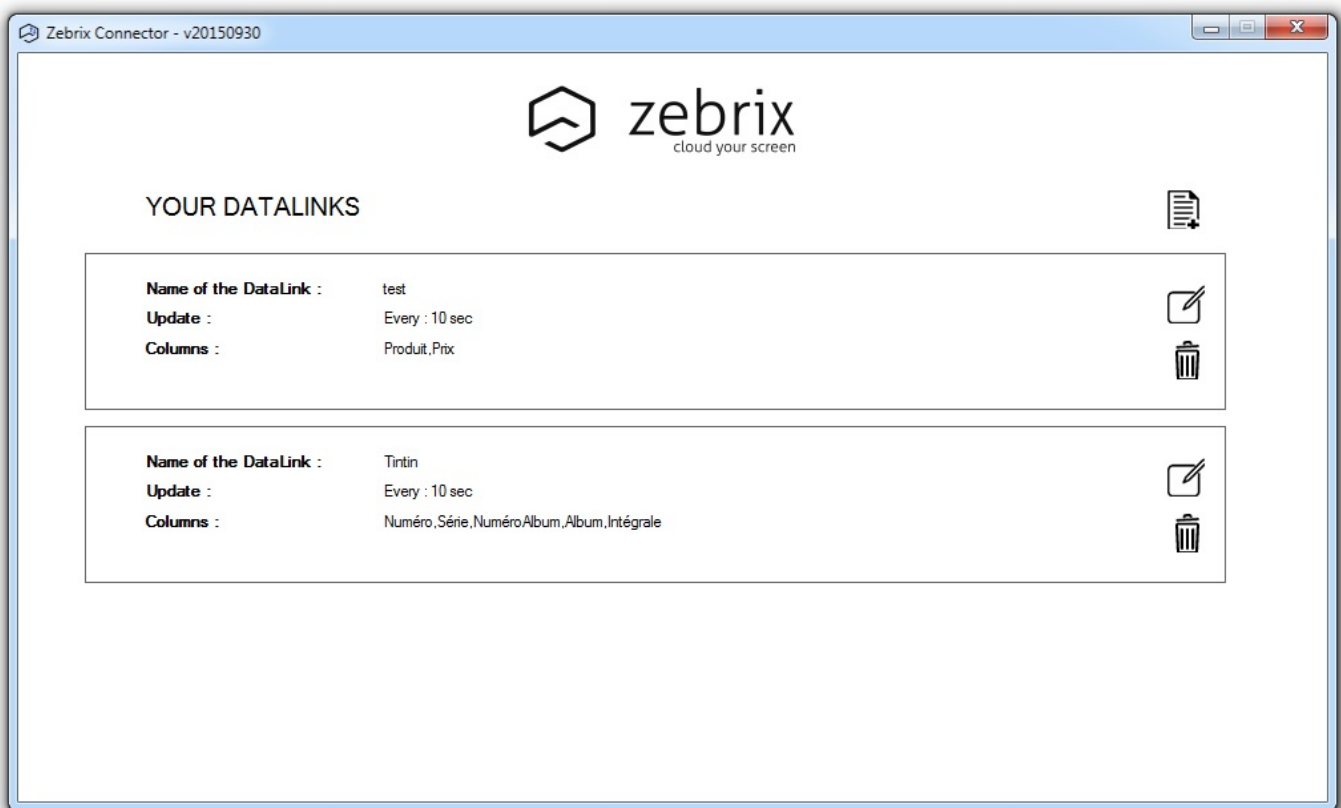
Warning, the datalink name must be unique.



- Then you just have to confirm. If you see the confirmation message it means that the first synchronisation is done (if you have an error it might mean that your client name, username, password could be wrong)



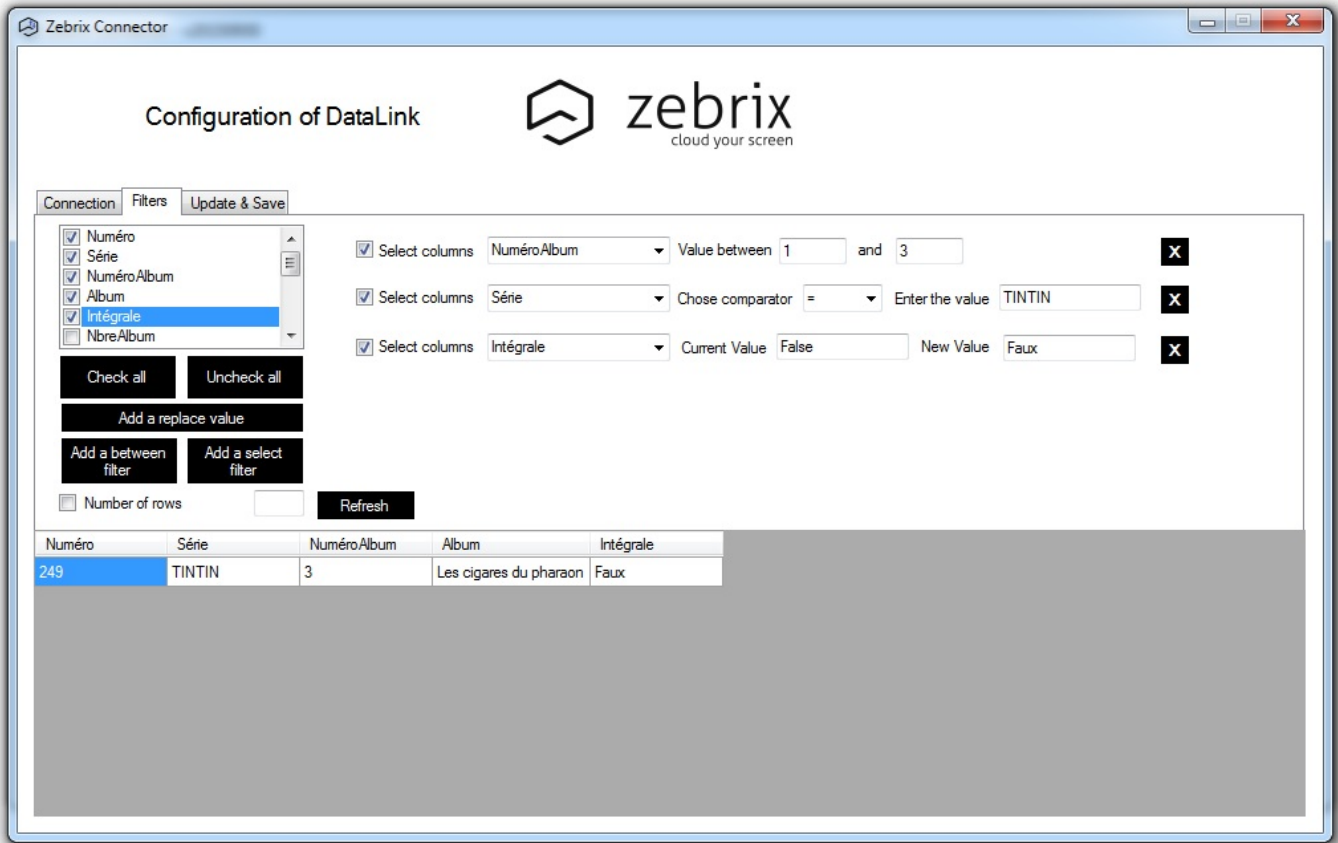
- The datalink has been added. You can created as many datalink you want.



### 4.3 Edition of an existing DataLink

- Click on the Edit button to edit it

- for example you can modify filters, column selection, interval, etc.



## 5. How to use your datasources on a zebrix page

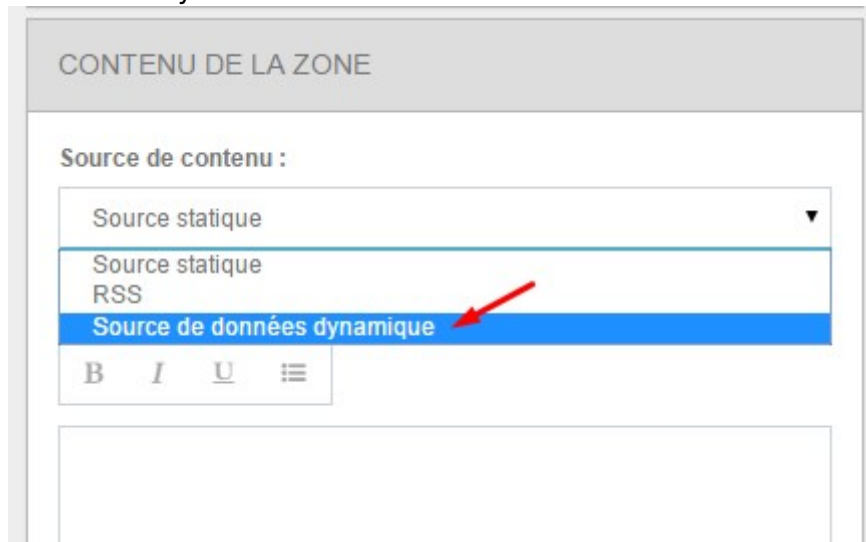
- Create a new page
- Add the datasources you want to use in the page



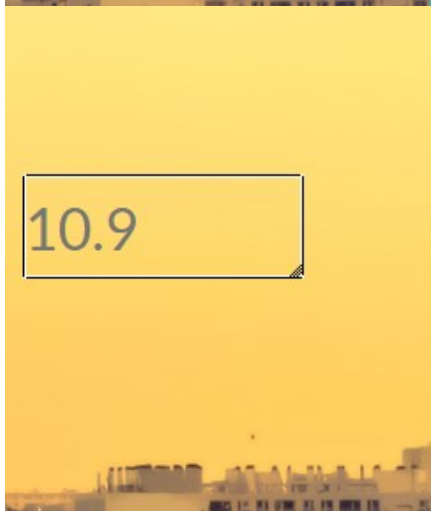
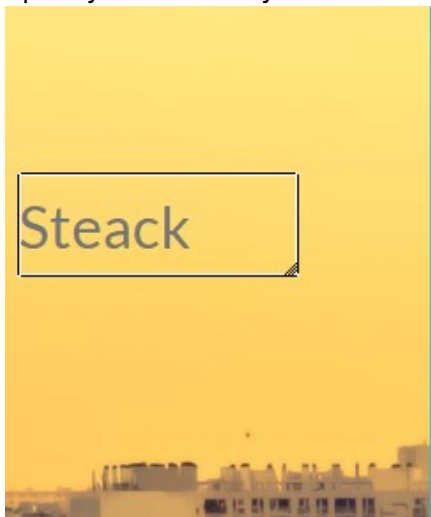
Select Datasource: No datasource selected

	Nom ↕	Famille de tag
<input type="checkbox"/>	Produit0	
<input type="checkbox"/>	Produit0	

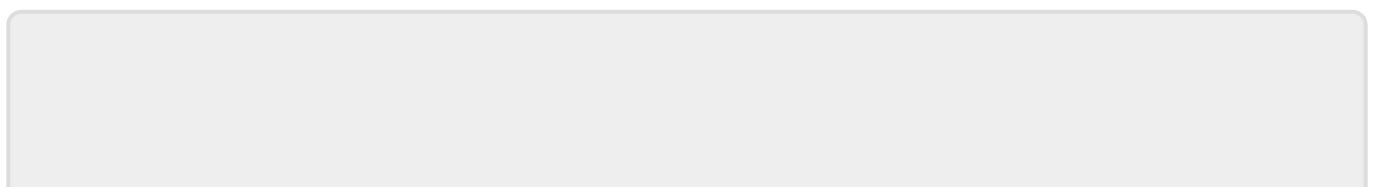
- Add a new zone
- Specify that the zone is a “dynamic datasource”



- Specify which field you need to display



- Data will automatically be updated in that zone after each synchronization.



From:

<https://documentation.zebrix.net/> - **zebrix signage documentation**

Permanent link:

<https://documentation.zebrix.net/doku.php?id=en:datasource>

Last update: **2021/08/25 10:29**

