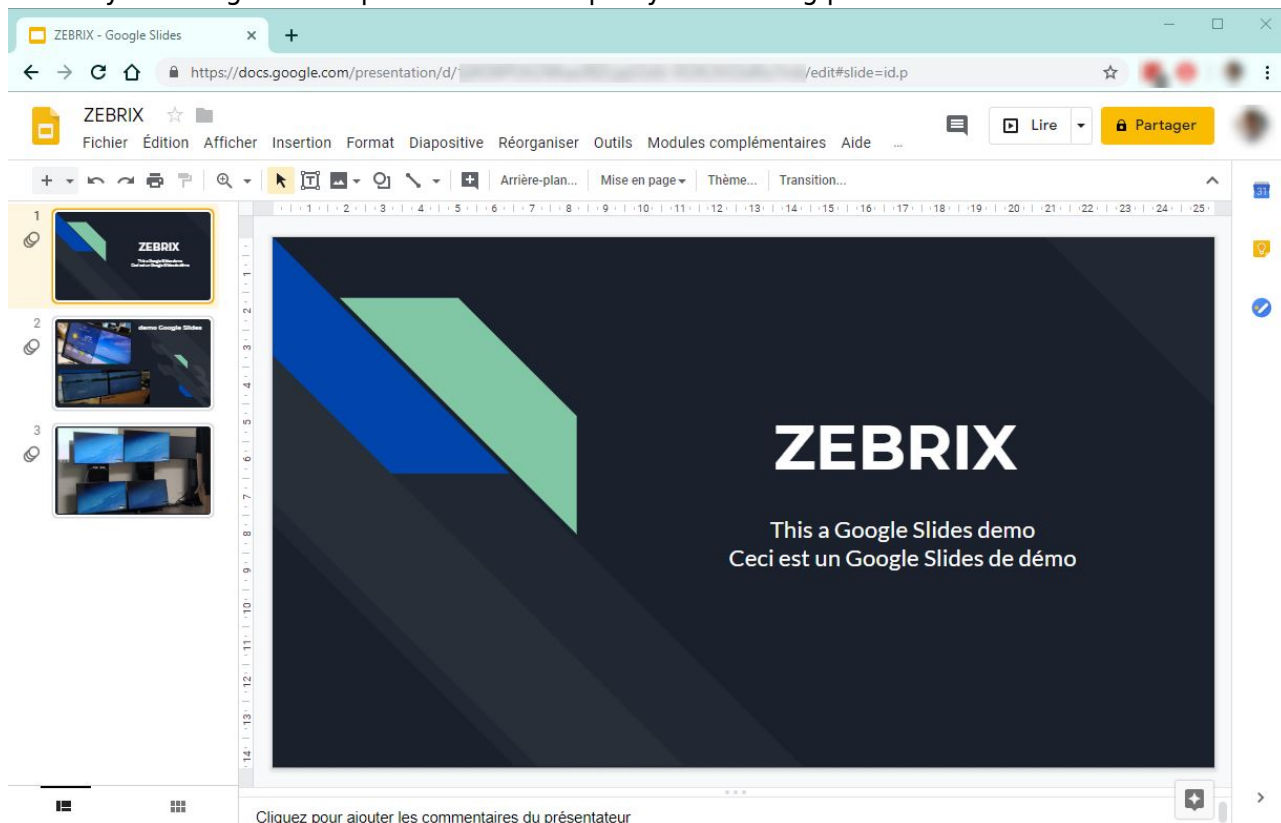


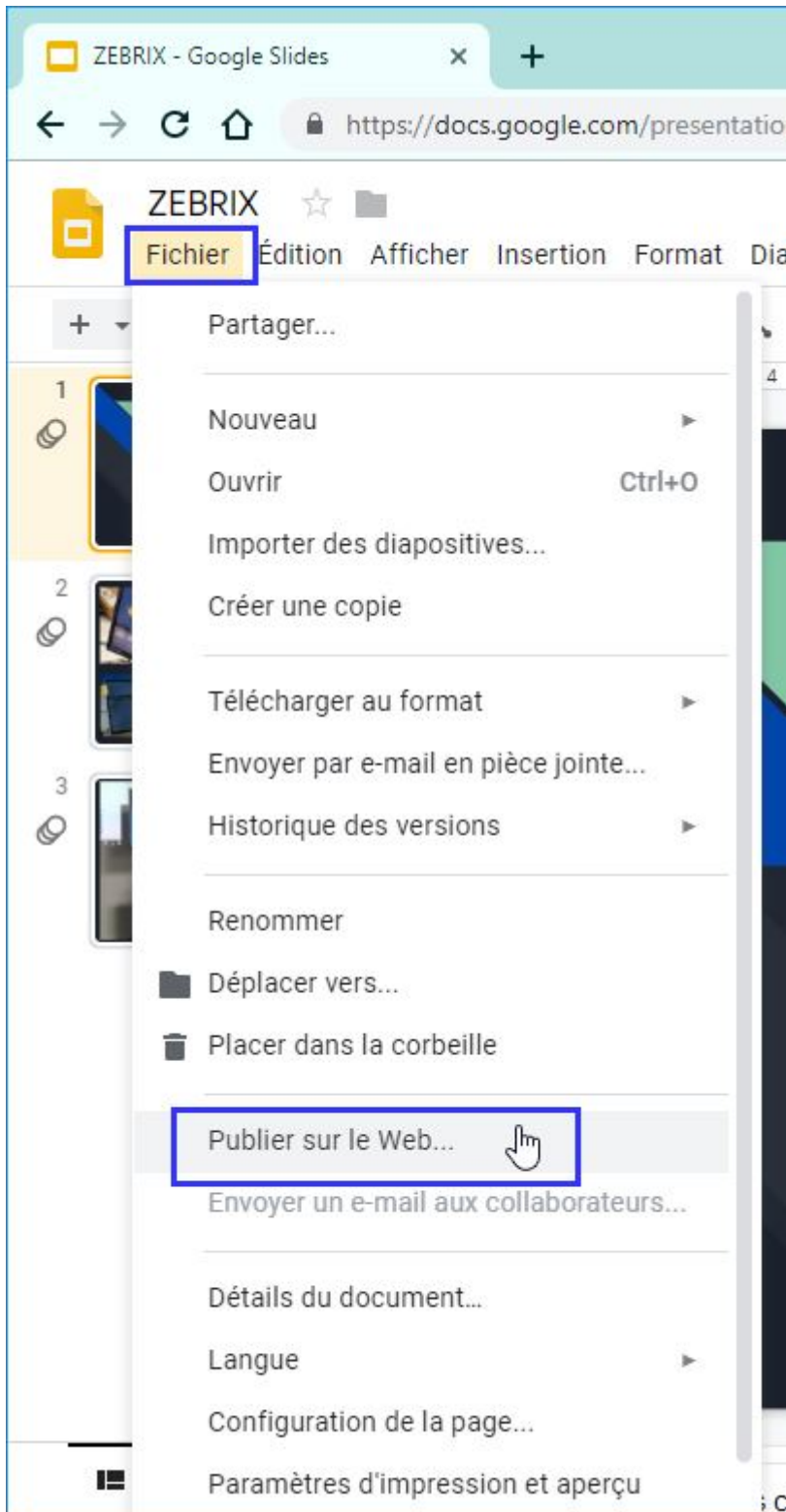
How do you integrate a Google Slides presentation into a zebrix page?

Creating and publishing your Google Slides presentation

1. Create your Google Slides presentation or open your existing presentation



2. **File > Publish to the web**



3. In the **Publish** tab, specify the display duration per slide, and tick the automatic restart at the end of the slideshow.
4. Copy the publication URL

Publier sur le Web



Ce document est publié sur Internet.

Rendez votre contenu visible par tous en le publiant sur le Web. Vous pouvez créer un lien vers votre document ou l'intégrer à un site Web. [En savoir plus](#)

Lien

1

Intégrer

Faire avancer automatiquement les diapositives :

toutes les 5 secondes ▾

2

Démarrer le diaporama dès que le lecteur est chargé

3

Redémarrer le diaporama après la dernière diapositive

4

<https://docs.google.com/presentation/d/e/2PACX-1vTJS7t5BTqq80rA21WX5i>

5

Ou partagez ce lien à l'aide de :



Publié

▾ Contenu publié et paramètres

Arrêter la publication

Adapt the publication URL

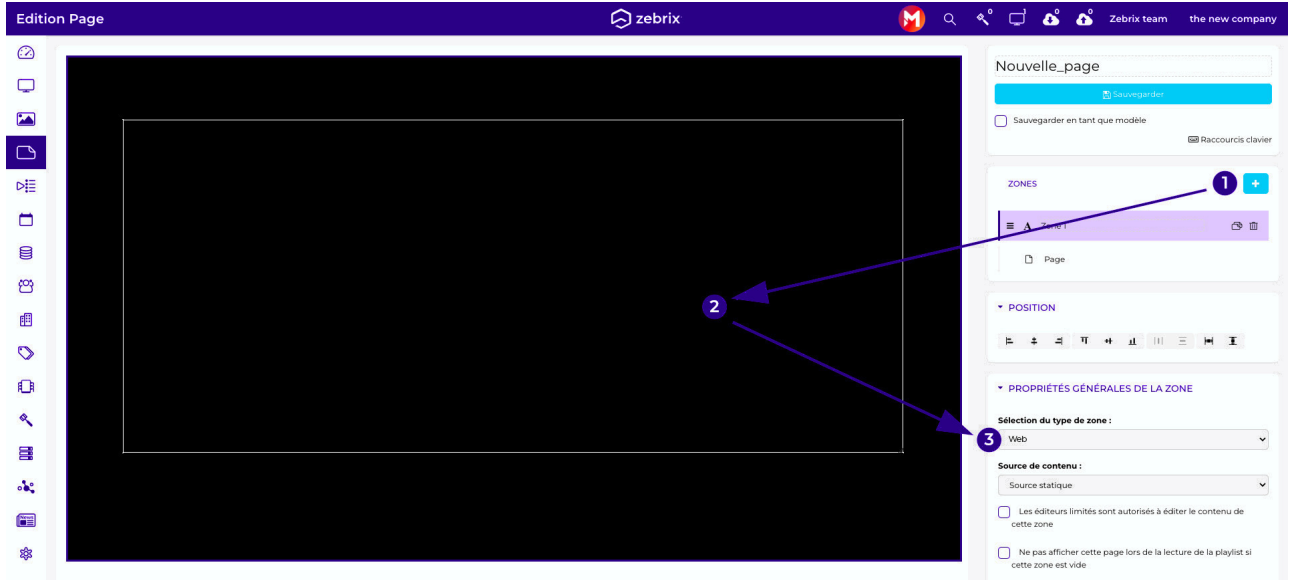
- In order to work, you need to adapt the URL slightly. Replace the word **pub** with **embed** and add **&rm=minimal** at the end of the URL (this will hide the slideshow control buttons at the bottom of the slides).

%%<https://docs.google.com/presentation/d/e/2TACX-1vTJS7t5BTqq80TA21WX5uM1Y9zGB8NFcUFmhiy-PEHmy7-M6RtX2QFVI0IfX4aysKseTGgfiaX3KJOi/%%pub%%?start=true&loop=true&delayms=3000%>%

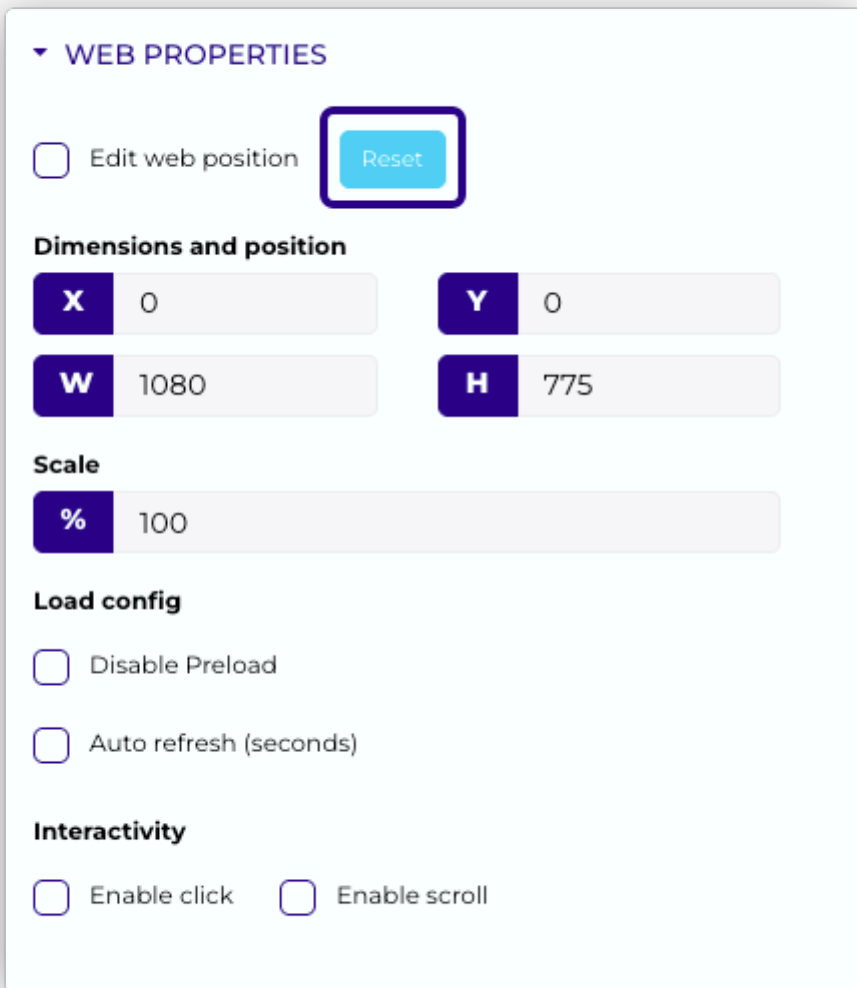
%%<https://docs.google.com/presentation/d/e/2TACX-1vTJS7t5BTqq80TA21WX5uM1Y9zGB8NFcUFmhiy-PEHmy7-M6RtX2QFVI0IfX4aysKseTGgfiaX3KJOi/%%embed%%?start=true&loop=true&delayms=3000%%&rm=minimal>

Integration into a zebrix page

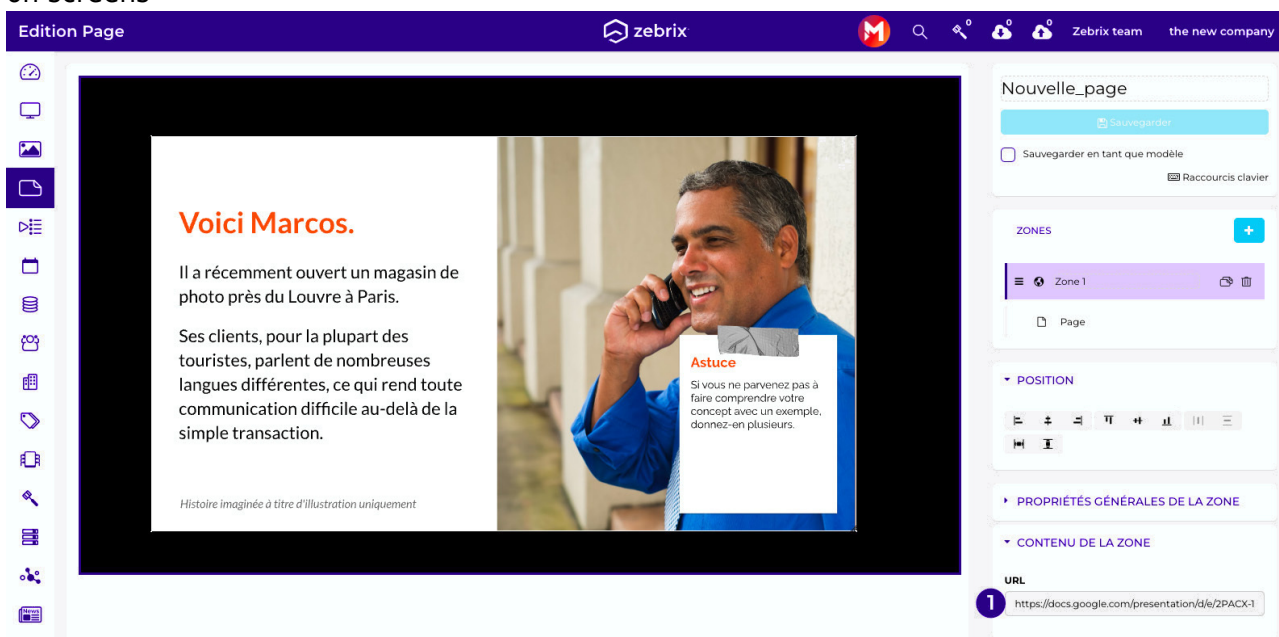
1. Create a new page
2. Add a new zone, position and size it as required
3. Define it as a **web** type zone \



4. In the **Web Zone Properties** pane, click on the **Reset** button \



- 5. In the **Zone content** pane, paste the URL
- 6. Your Google Slide presentation is now embedded in your zebrix page and ready to be displayed on screens



From:

<https://documentation.zebrix.net/> - **zebrix signage documentation**

Permanent link:

https://documentation.zebrix.net/doku.php?id=en:embed_google_slides

Last update: **2025/12/02 10:45**

