

Geolocate my screen:

Prerequisite

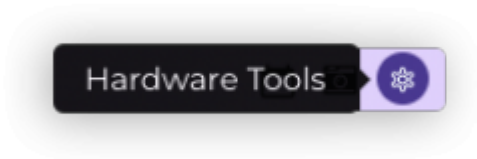
A screen connected and active in Zebrix

Configuration

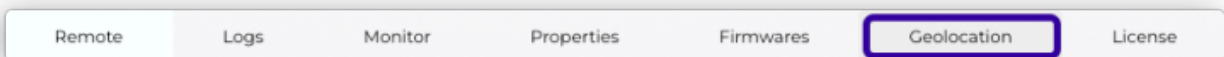
Select a screen by checking the corresponding box.



Click the settings button at the end of the screen row.



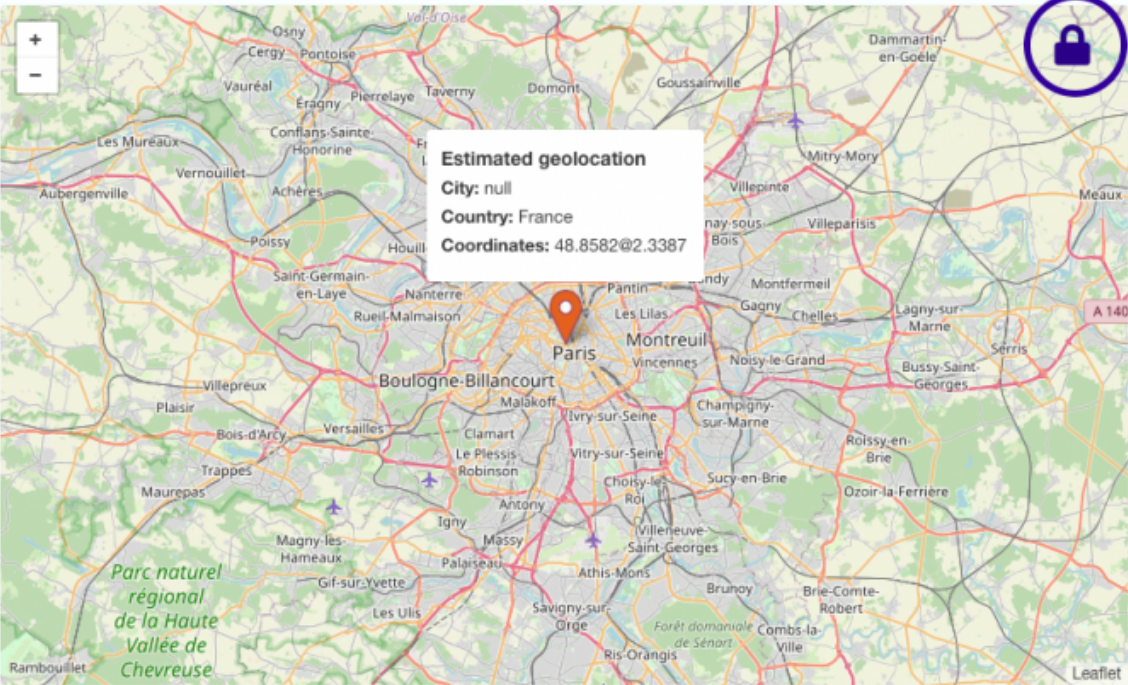
Go to the *Geolocation* tab.



The map will be displayed, showing the estimated location (red pin).

Hardware Tools: 1 Screen selected - LAB DEV - Screen 07

Remote Logs Monitor Properties Firmwares **Geolocation** License



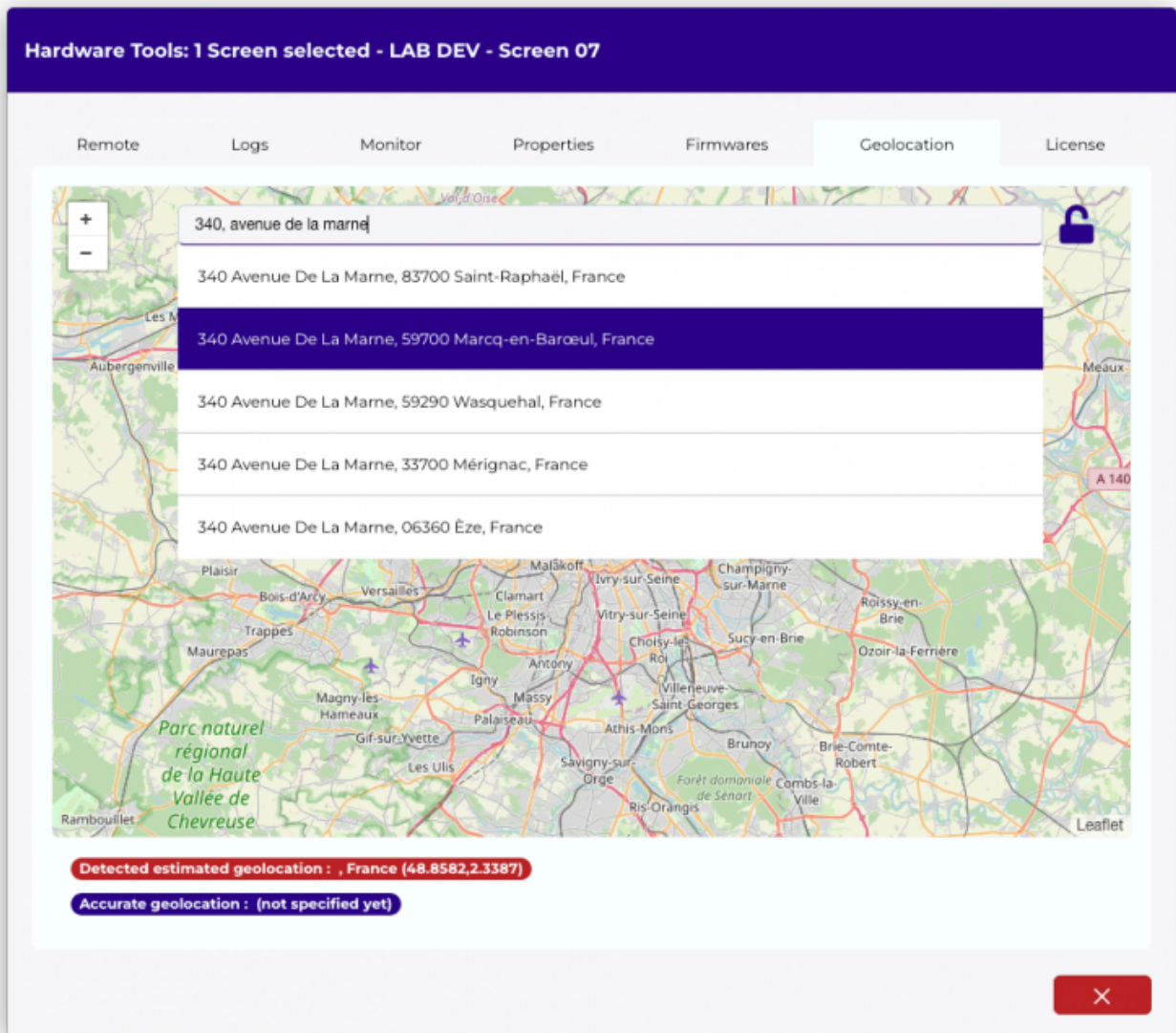
Estimated geolocation
City: null
Country: France
Coordinates: 48.8582@2.3387

Detected estimated geolocation : , France (48.8582,2.3387)

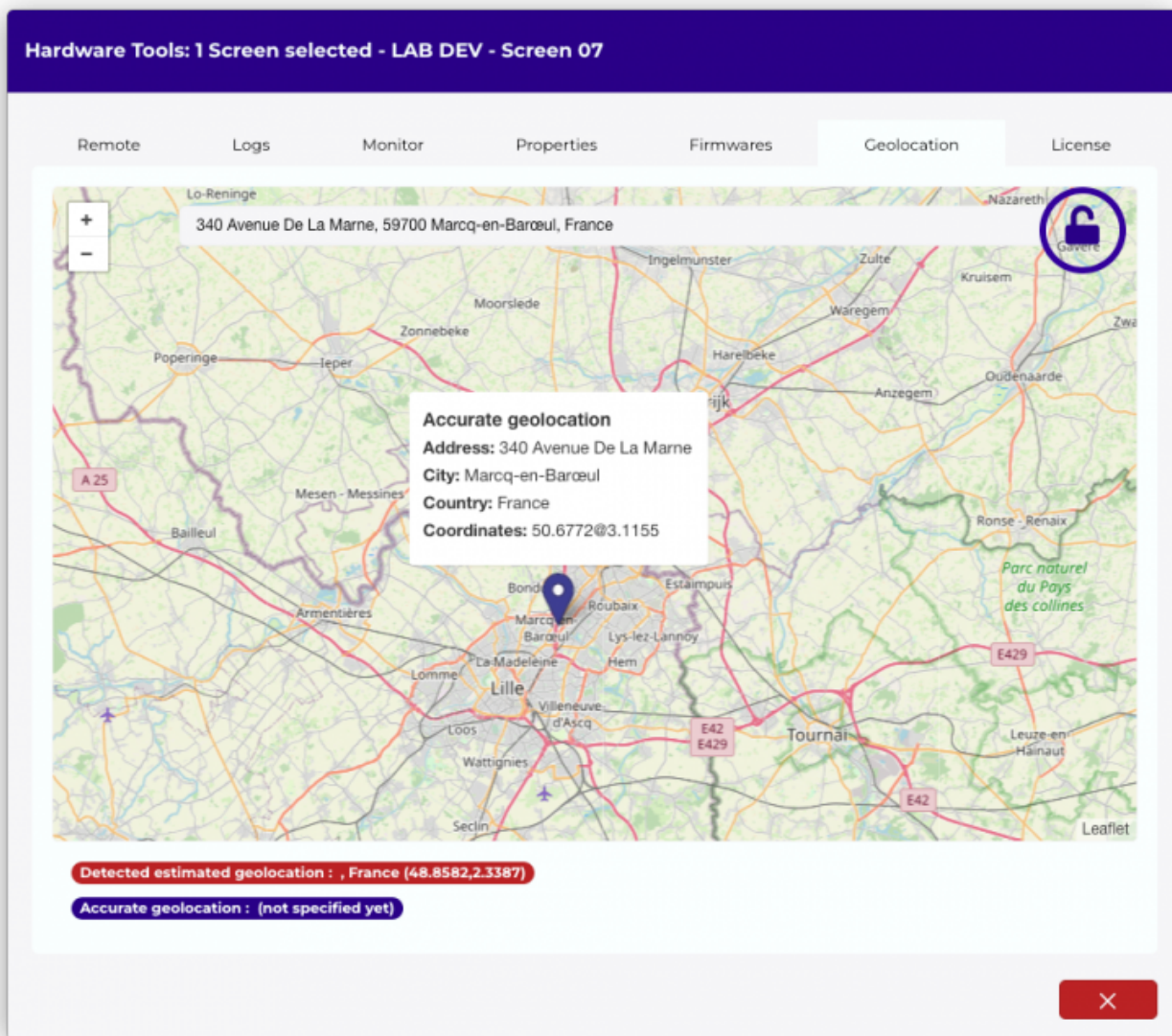
Accurate geolocation : (not specified yet)

Close button (X)

Click the closed padlock icon to unlock geolocation editing.



Enter the exact address in the input field and select the correct entry from the list.



If the address is not available in the list, or if the suggested location is not accurate enough, you can manually adjust it: with the padlock unlocked, drag and drop the pin to the desired position.

To save the changes, lock the position again by clicking the open padlock icon.

From: <https://documentation.zebrix.net/> - **zebrix signage documentation**

Permanent link: <https://documentation.zebrix.net/doku.php?id=en:geolocalisation>

Last update: **2025/09/17 11:17**

