



⚠ Note: This feature is only available on devices running version V3.

# Timezone

This guide explains how zebrix deals with time and more precisely the timezones.

## General information

- Zebrix automatically sets the time in the screen at each startup. (It is therefore unnecessary to adjust the time via the screen menu)
- The time displayed in the menu is always set to GMT (Greenwich Mean Time +00h00) whatever the timezone that is chosen. - Zebrix is in charge of transforming the GMT time into the correct local time, thanks to the TimeZone configured on the CMS (see below)
- Go to “Hardware Tools” on the concerned device, then “Monitor”. The local date/time of the screen corresponds to the time translated by zebrix which is the correct local time (GMT time + the time difference applied on it thanks to the timezone that has been chosen).
- The time that is displayed in a “date/time” zone on the pages assigned to the screen is identical to this local date.

## How to Change the Time Zone

This guide explains how to modify the time zone.

### How to Change the Time Zone on a Screen

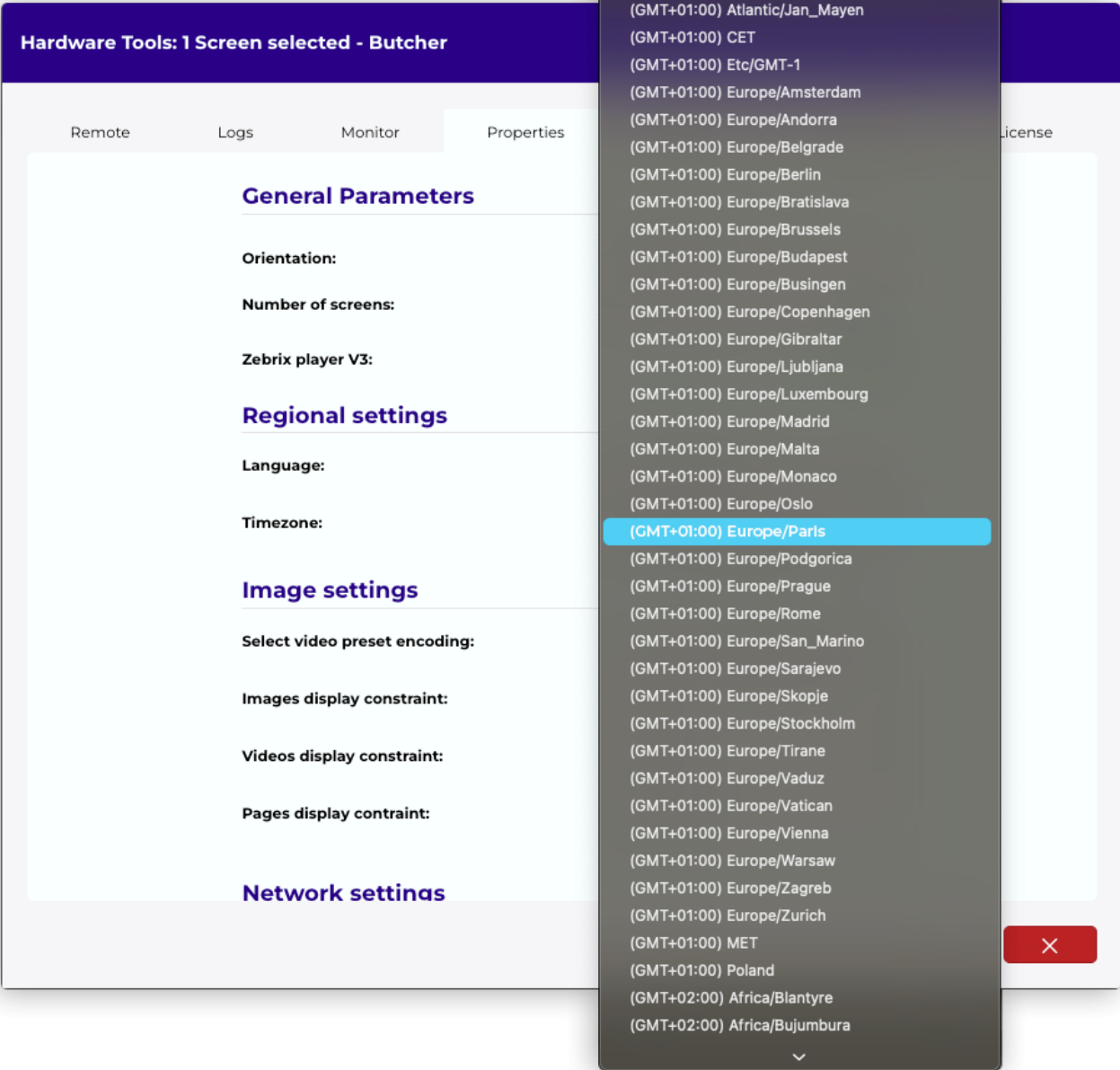
Status	Name ↕	Tags	Content	Model	Actions
<input type="checkbox"/>	Butcher		Page Raisin.jpg	QM55C	

Select the screens on which you want to apply a different time zone.

Click on “Hardware Tools”.

Go to the “Properties” tab.

Select the desired time zone, then click on “Apply”.



**Hardware Tools: 1 Screen selected - LAB DEV - Screen 14**

RemoteLogsMonitor**Properties**FirmwaresGeolocationLicense

Some options have been changed, be sure to apply changes before quit.

**General Parameters**

**Orientation:**Landscape

**Number of screens:**1

**Zebrix player V3:**☒

**Regional settings**

**Language:**Français - French

**Timezone:**1 (GMT+01:00) Europe/I Apply2

**Image settings**

**Select video preset encoding:**default : Full HD 1080p @ 30 FP

**Images display constraint:**Cover

**Videos display constraint:**Contain

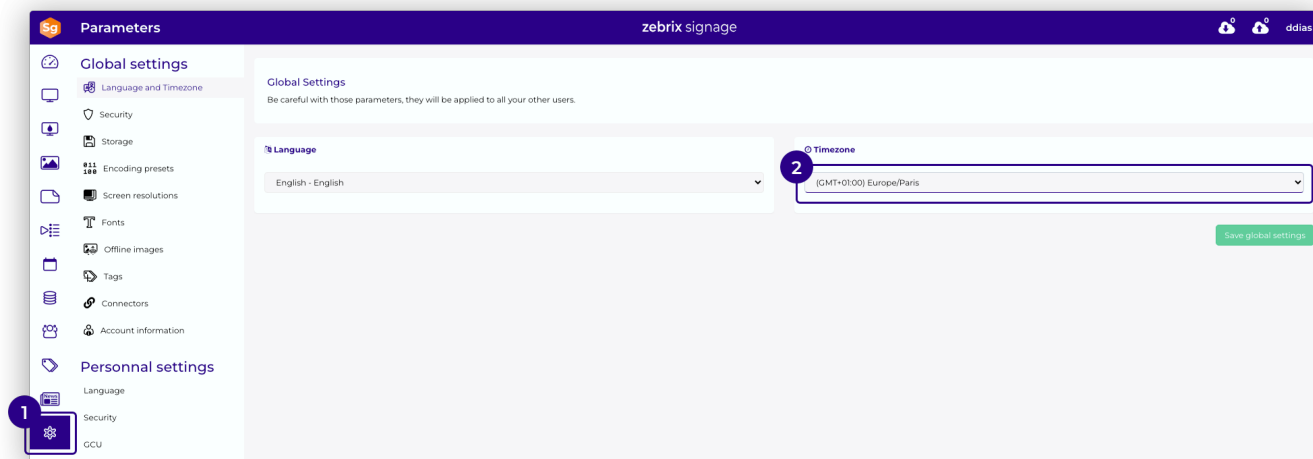
**Pages display constraint:**Adapt dimensions

X

## How to Change the Time Zone of a Customer Account

It is possible to modify the time zone at the customer account level. This setting will be used as the default time zone for all new screens/players added to this account.

Go to the account's general settings and select the desired time zone.



## How to Check the Configuration on a Screen

Press the “Tools” button on the remote control.



From:  
<https://documentation.zebrix.net/> - **zebrix documentation**

Permanent link:  
[https://documentation.zebrix.net/doku.php?id=en:how\\_to\\_change\\_a\\_time\\_zone](https://documentation.zebrix.net/doku.php?id=en:how_to_change_a_time_zone)

Last update: **2025/11/12 11:58**

