

NUC OS (re)installation

1. Introduction

This guide describes how you can reinstall the full OS and the zebrix software on the player. During this procedure, the partition will be formatted and all data will be lost on the player. It means you'll have to reconfigure all your settings (network settings, zebrix settings, etc.) and all medias stored on the player will be erased.



CURRENT VERSION IS 20.11-03

2. Get the last version of the disk image

Please contact our support to get the latest version of the nuc disk image:

- Support Europe : support@zebrix.net
- Support America : support@zebrix.us



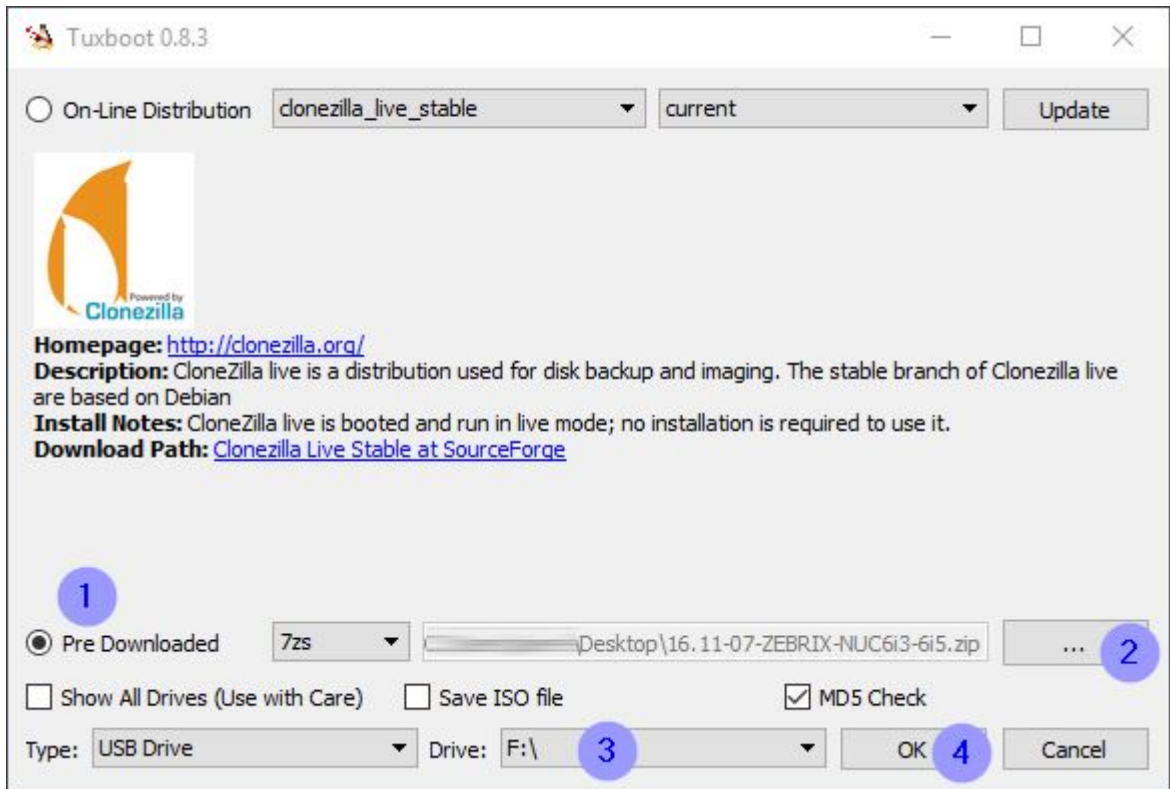
Don't forget to mention to our support the zebrix player model you have. Disk image and version might differs.

3. USB installation drive creation

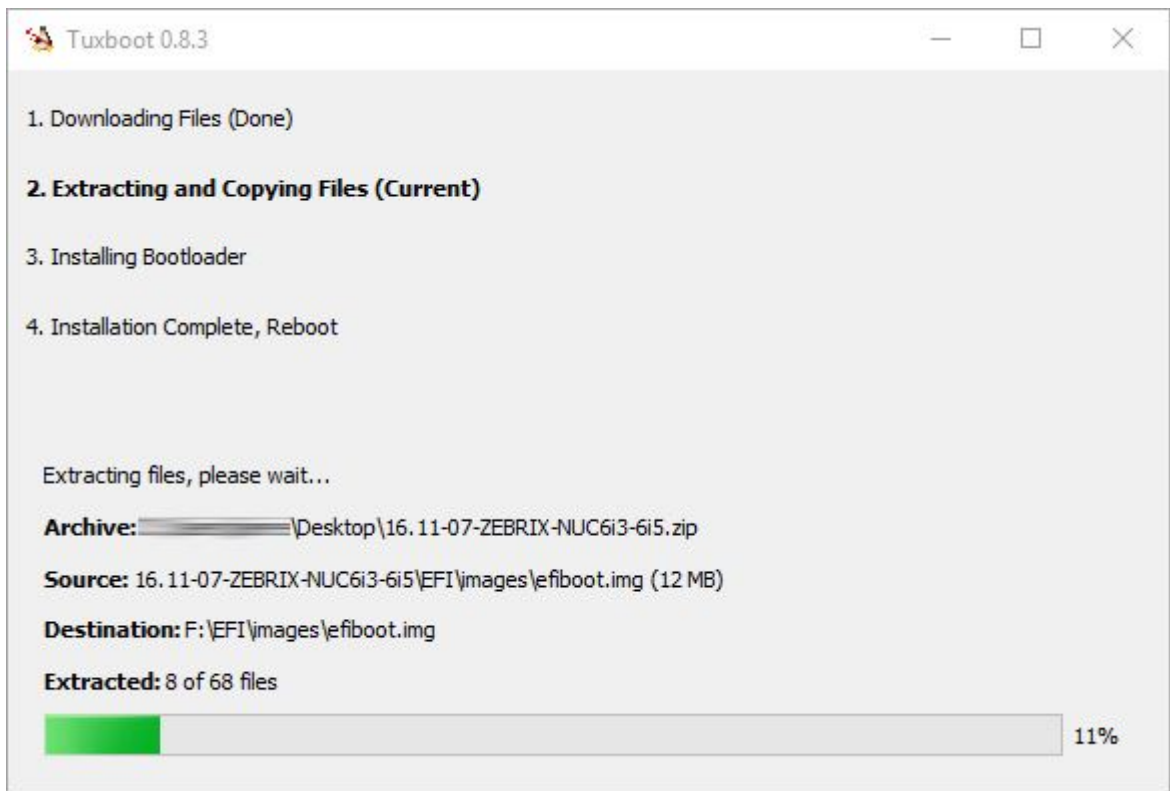
- Please download the diskimage from the link you've received from the zebrix support
- Please download tuxboot freeware

<http://sourceforge.net/projects/tuxboot/files/latest/download?source=files>

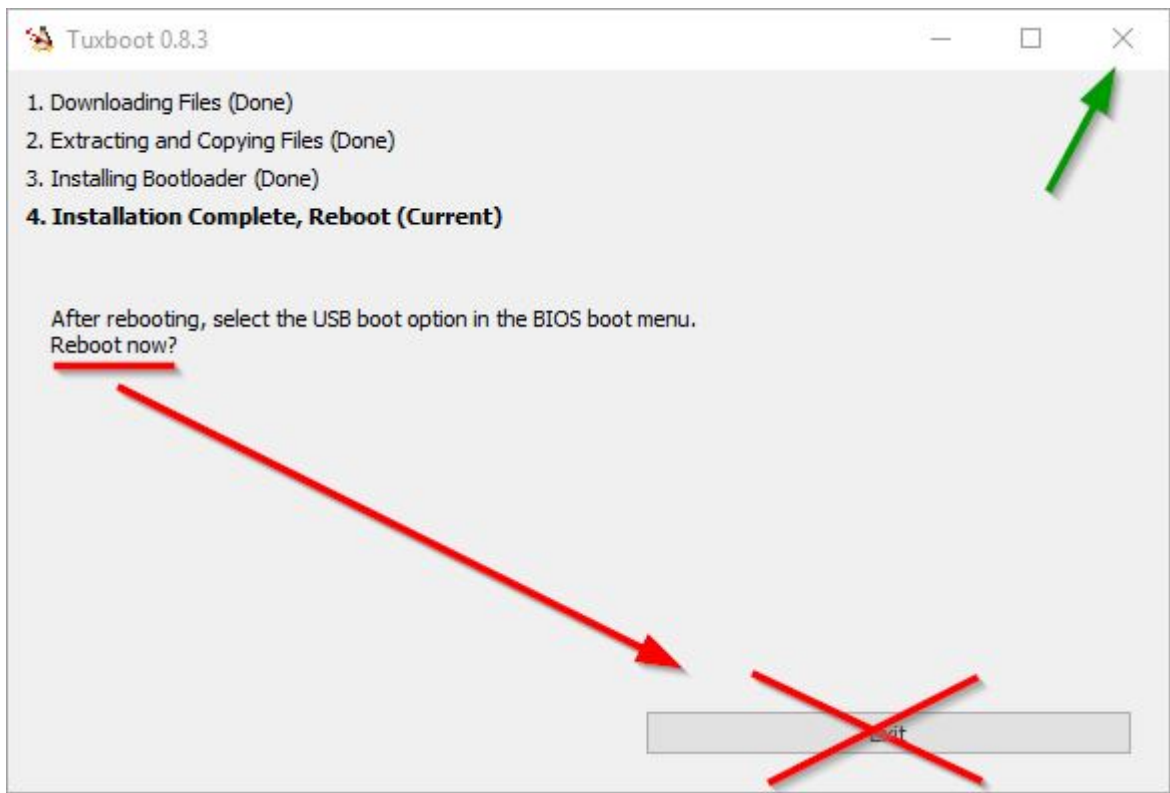
- Connect your USB key to your windows computer (minimum 2 GB) (Warning, it will be formatted)
- Start Tux Boot and browse to the ISO file you've downloaded



- Press Ok and the USB key creation will takes several minutes.



- Clone tuxboot with the redcross at the top right (this will avoid the reboot of your computer)



4. Restoration process on the zebrix player :

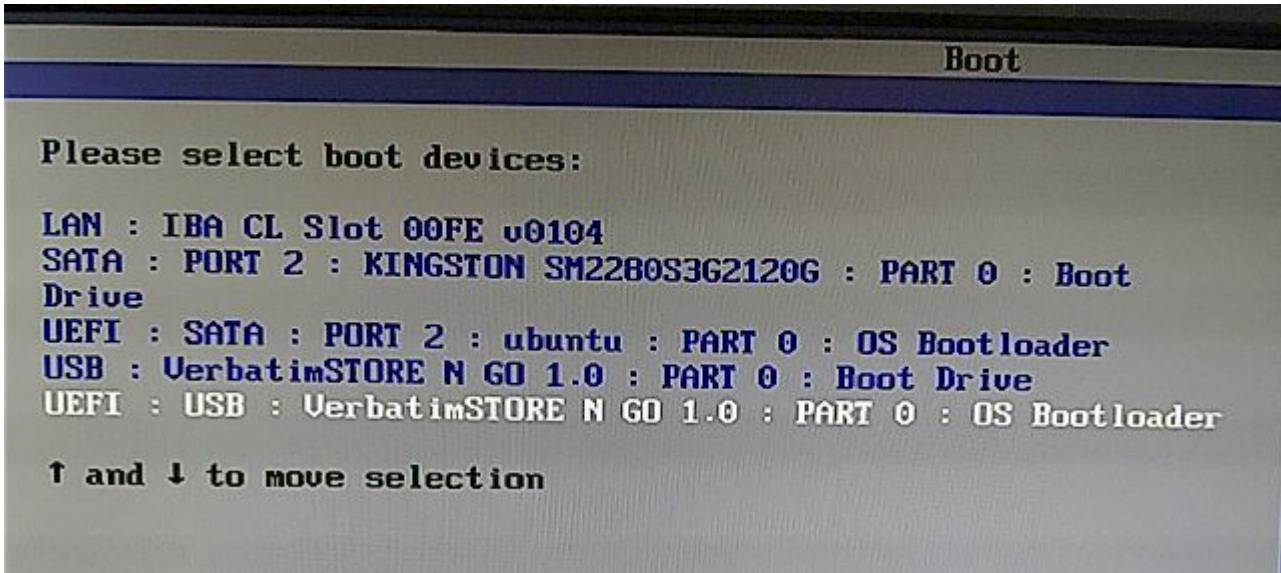


The restoration process will restore all default settings on the device. If you use static IP settings please take note of the setting to be able to restore the settings at the end of the process.

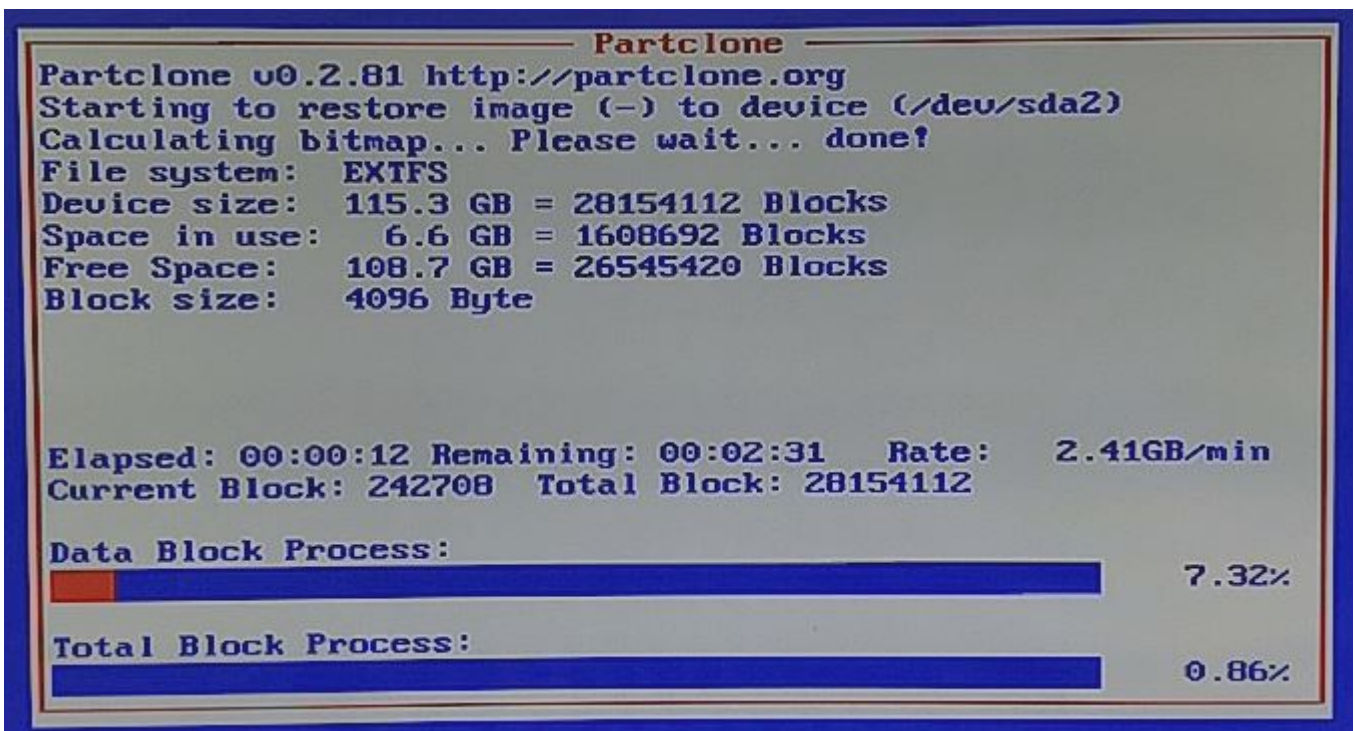
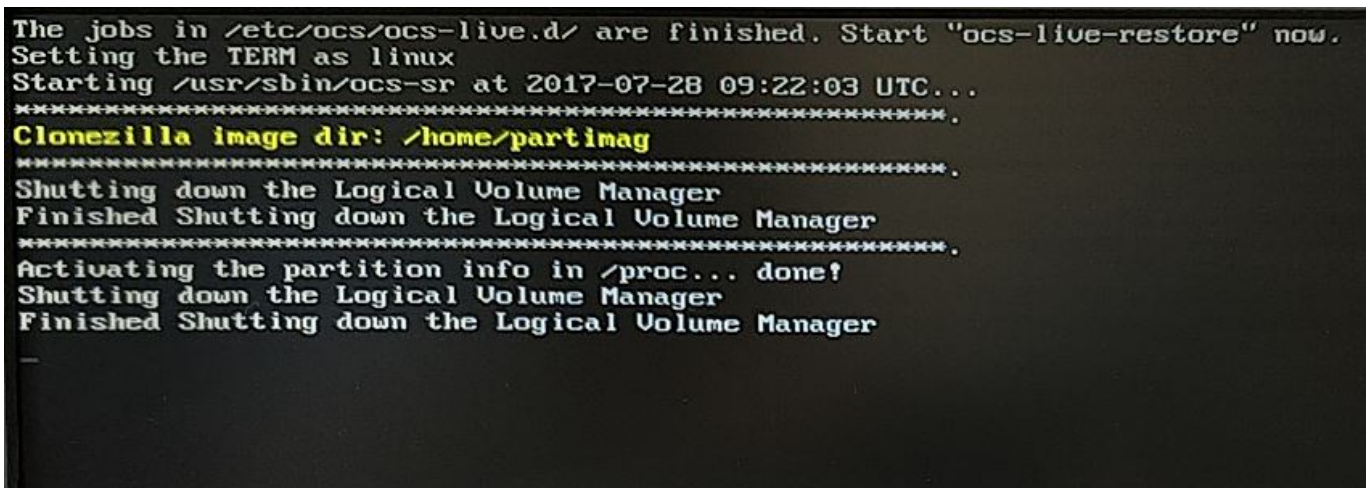
- Shutdown the player
- Connect the USB drive
- Power on the zebrix player
- The reinstallation process will start automatically

(OPTIONAL) if not starting automatically, you may need to force the player to boot on USB:

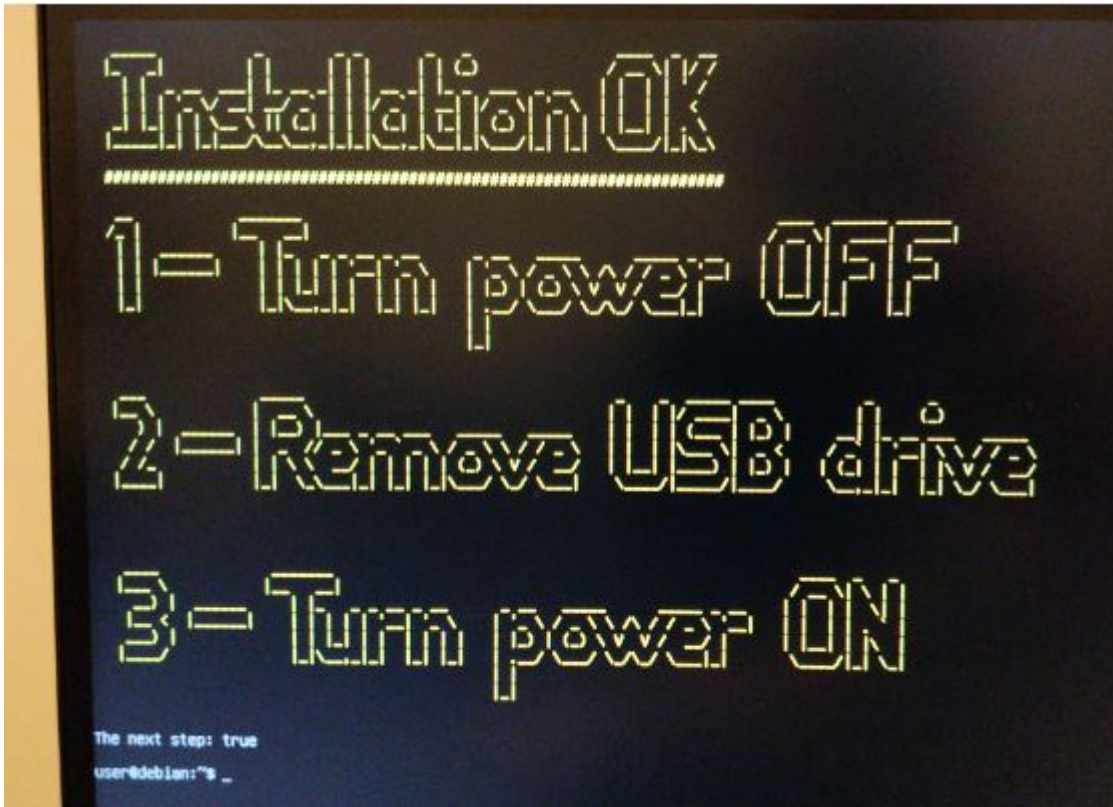
- Connect a USB keyboard and the USB key with the image
- Reboot NUC and Press F10 key until you see the boot menu
- Select UEFI + your USB drive name/brand (your USB drive should appear twice, please select the line prefixed by UEFI)



- Restoration tool will restore load for about 20 seconds and will start the installation process



- When it's done, you'll see this message



Configure your player with the zebrix configuration tool

- Press F1 to access settings



- You might have to change the default server address (depending on your location):

America	screen.zebrix.us
Europe	screenv2.zebrix.net

- Adjust your IP settings (default is DHCP)

From:
<https://documentation.zebrix.net/> - **zebrix documentation**

Permanent link:
<https://documentation.zebrix.net/doku.php?id=en:nucimageinstallation&rev=1624610284>

Last update: **2021/06/25 10:38**

