

# SSO implementation in zebrix with Azure AD (Office 365)

## Save zebrix metadata in a file

1. Surf on <https://auth.zebrix.net/metadata>
2. Right click and save the file to a file with .xml extension



## In the Azure AD admin center, add a new app



**Create a new app using these options and call it "zebrix" or "zebrix CMS"**



**zebrix overview**



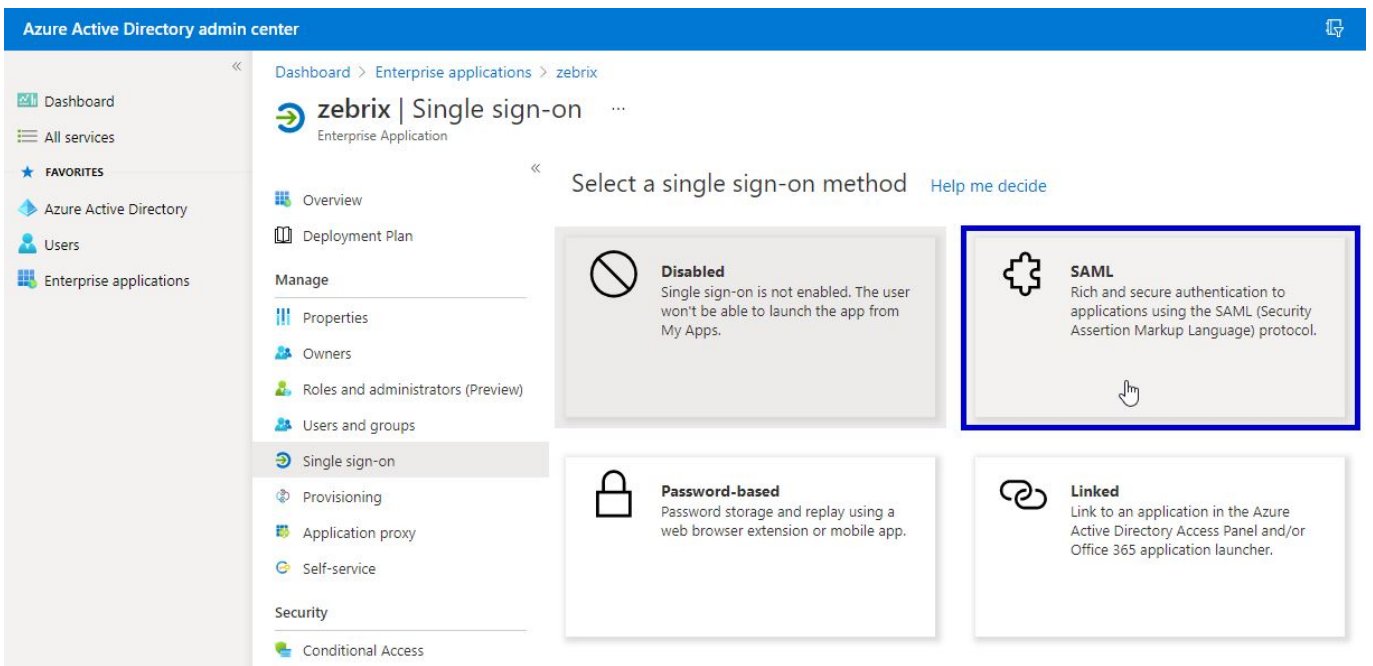
### Choose which groups/users will be allowed to login



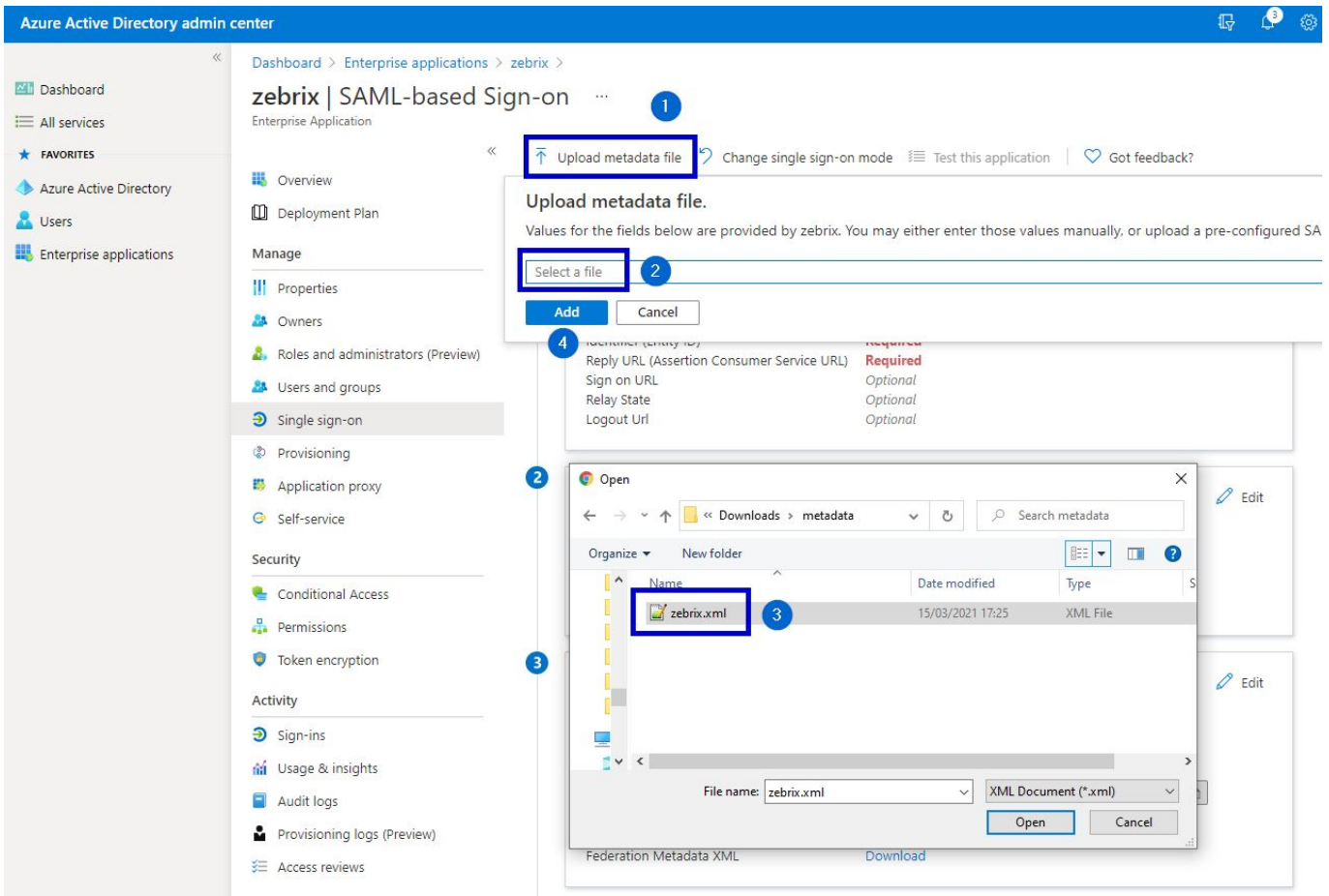
### Set the zebrix logo

Save the following logo

### Set up single sign-on : choose SAML



## Upload previously downloaded file to portal



## Add a "Sign On URL" and save the basic SAML configuration

Some fields will be prefilled thanks to the imported .XML file, but the “Sign On URL” needs to be filled manually. Please specify the following URL: <https://cms.zebrix.net/cn/customername> (please replace **customername** with your actual customer name on zebrix)

## Basic SAML Configuration

 Save

Identifier (Entity ID) \* ⓘ

*The default identifier will be the audience of the SAML response for IDP-initiated SSO*

Default

<https://auth.zebrix.net>

ⓘ 

Reply URL (Assertion Consumer Service URL) \* ⓘ

*The default reply URL will be the destination in the SAML response for IDP-initiated SSO*

Default

<https://auth.zebrix.net/sso/postResponse>

ⓘ 

Sign on URL ⓘ

**Please adjust to your zebrix customer name**

<https://cms.zebrix.net/cn/customername>

Relay State ⓘ

Enter a relay state

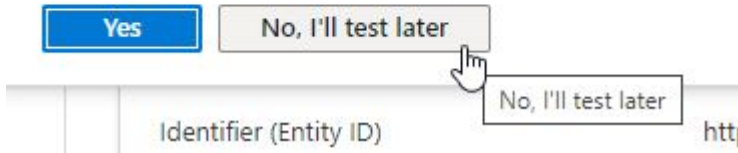
Logout Url ⓘ

<https://auth.zebrix.net/sso/logout>

## Skip SSO login test

## Test single sign-on with zebrix

To ensure that single sign-on works for your application, to test now?



## Edit User attributes and claims

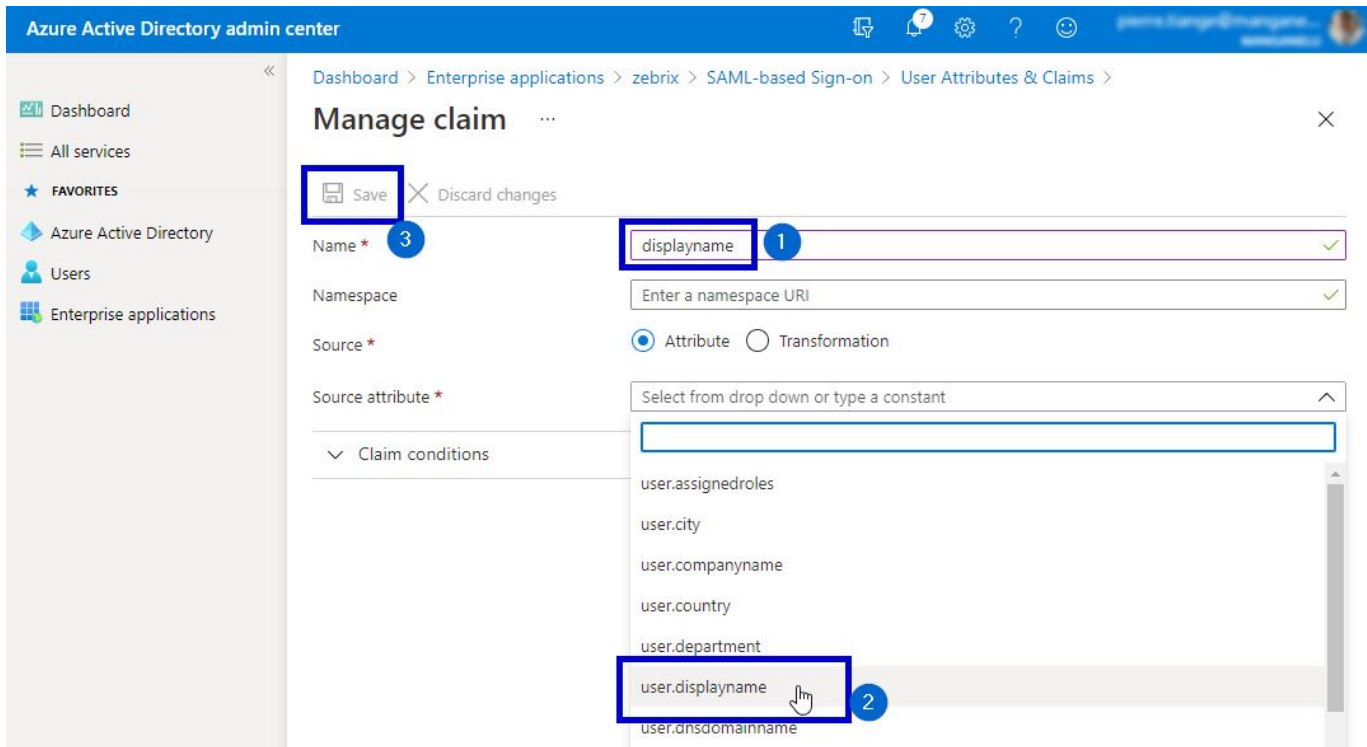
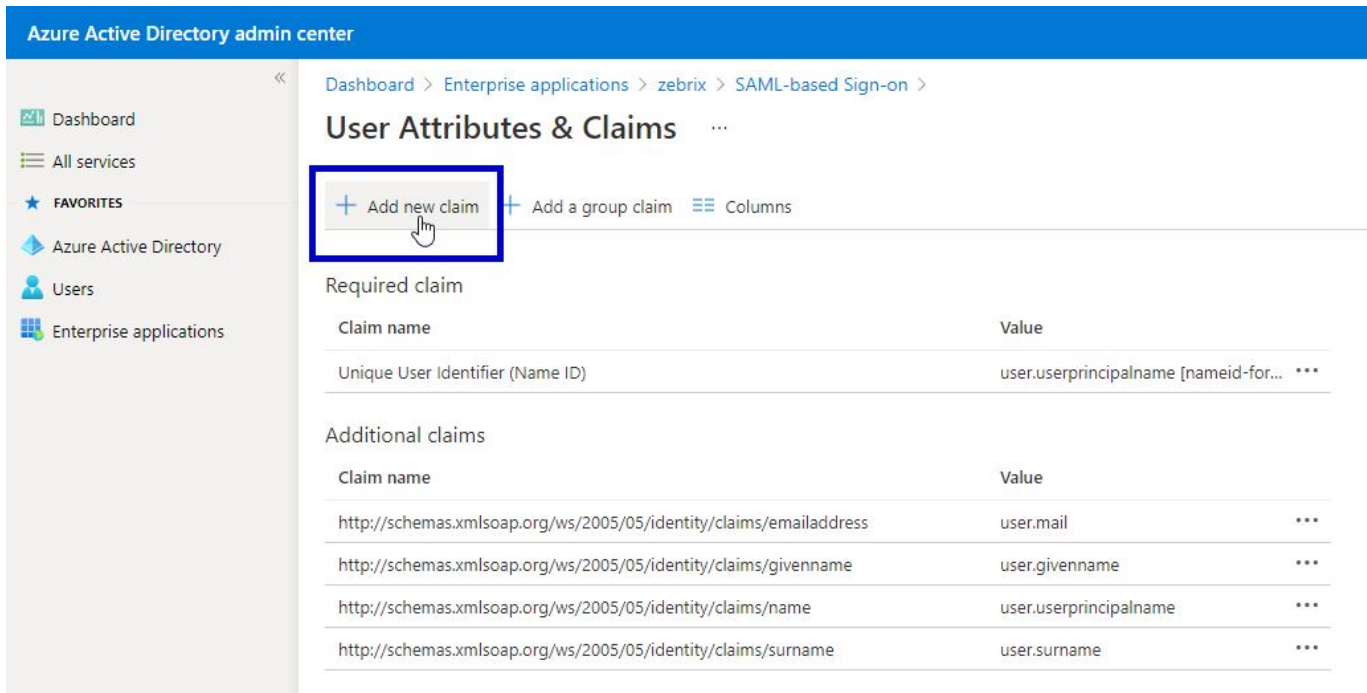
The screenshot shows the Azure Active Directory admin center interface. The left sidebar contains navigation options like 'Dashboard', 'All services', 'Users', and 'Enterprise applications'. The main content area is titled 'zebrix CMS | SAML-based Sign-on' and includes a 'Manage' section with options like 'Properties', 'Owners', and 'Single sign-on'. The 'Single sign-on' section is expanded to show 'Basic SAML Configuration' and 'User Attributes & Claims'. The 'Basic SAML Configuration' table lists fields like 'Identifier (Entity ID)', 'Reply URL', and 'Sign on URL'. The 'User Attributes & Claims' table lists fields like 'givenname', 'surname', and 'emailaddress'. A blue box highlights the 'Edit' button for the 'User Attributes & Claims' section, with a tooltip that says 'Edit user attributes & claims'.

Basic SAML Configuration	
Identifier (Entity ID)	https://auth.zebrix.net
Reply URL (Assertion Consumer Service URL)	https://auth.zebrix.net/sso/postResponse
Sign on URL	https://cms.zebrix.net/cn/customername
Relay State	Optional
Logout Url	https://auth.zebrix.net/sso/logout

User Attributes & Claims	
givenname	user.givenname
surname	user.surname
emailaddress	user.mail
name	user.userprincipalname
displayname	user.displayname
Unique User Identifier	user.userprincipalname

## Add a new claim



1. Use **displayname** as name
2. In the name space field please copy / paste the following namespace <http://schemas.xmlsoap.org/ws/2005/05/identity/claims>
3. In the dropdown list, select the value **user.displayname**
4. Press the **Save** button

**Copy the "App Federation Metadata URL" and send it to support@zebrix.net**

Last update: 2021/06/16 19:20 en:sso\_implementation\_azuread [https://documentation.zebrix.net/doku.php?id=en:sso\\_implementation\\_azuread&rev=1623864027](https://documentation.zebrix.net/doku.php?id=en:sso_implementation_azuread&rev=1623864027)

Azure Active Directory admin center

Dashboard > Enterprise applications > zebrix >

### zebrix | SAML-based Sign-on

Enterprise Application

Upload metadata file | Change single sign-on mode | Test this application | Got feedback?

givenname	user.givenname
surname	user.surname
emailaddress	user.mail
name	user.userprincipalname
Unique User Identifier	user.userprincipalname

#### SAML Signing Certificate

Status: Active Edit

Thumbprint: `0286455274161616202044101F4E888AC3`

Expiration: 3/17/2024, 1:51:48 PM

Notification Email: `msn@zebrix.com`

App Federation Metadata Url: <https://login.microsoftonline.com/.../b4d-20f1-...> Download

Certificate (Base64) Download

Certificate (Raw) Download

Federation Metadata XML Download

**Our Technical team will implement your settings on zebrix side and activate to SSO on your account**

From: <https://documentation.zebrix.net/> - **zebrix documentation**

Permanent link: [https://documentation.zebrix.net/doku.php?id=en:sso\\_implementation\\_azuread&rev=1623864027](https://documentation.zebrix.net/doku.php?id=en:sso_implementation_azuread&rev=1623864027)

Last update: **2021/06/16 19:20**

