

SSO implementation in zebrix with Azure AD (Office 365)

Save zebrix metadata in a file

1. Surf on <https://auth.zebrix.net/metadata>
2. Right click and save the file to a file with .xml extension



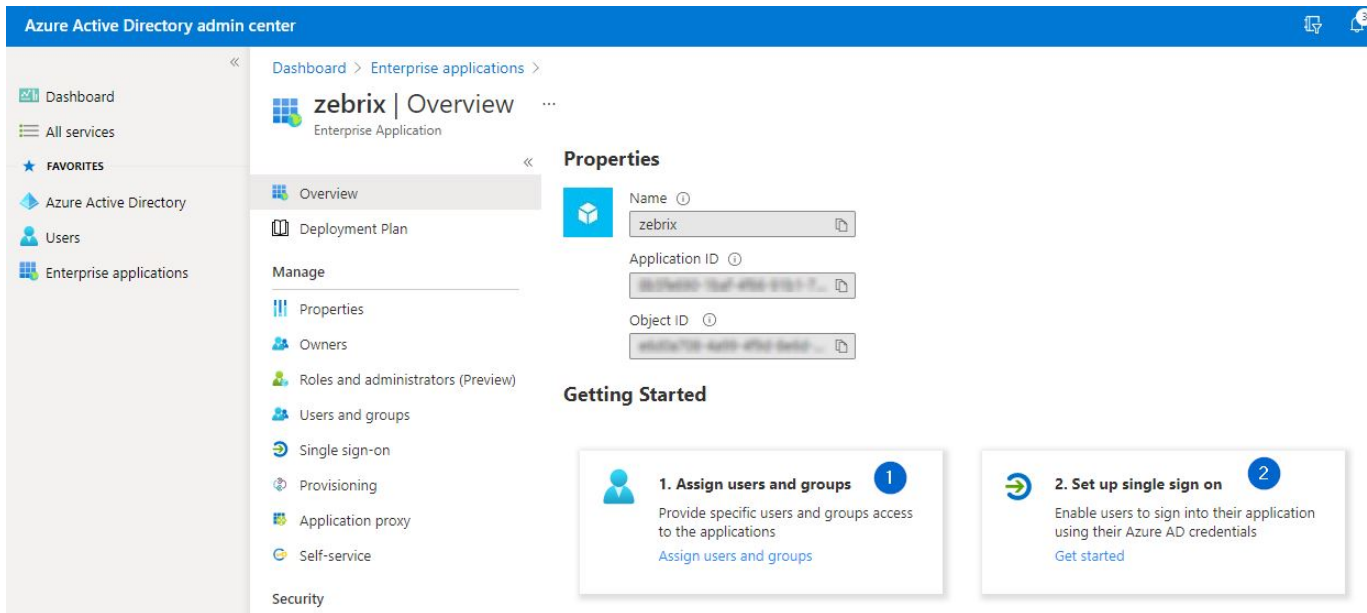
In the Azure AD admin center, add a new app



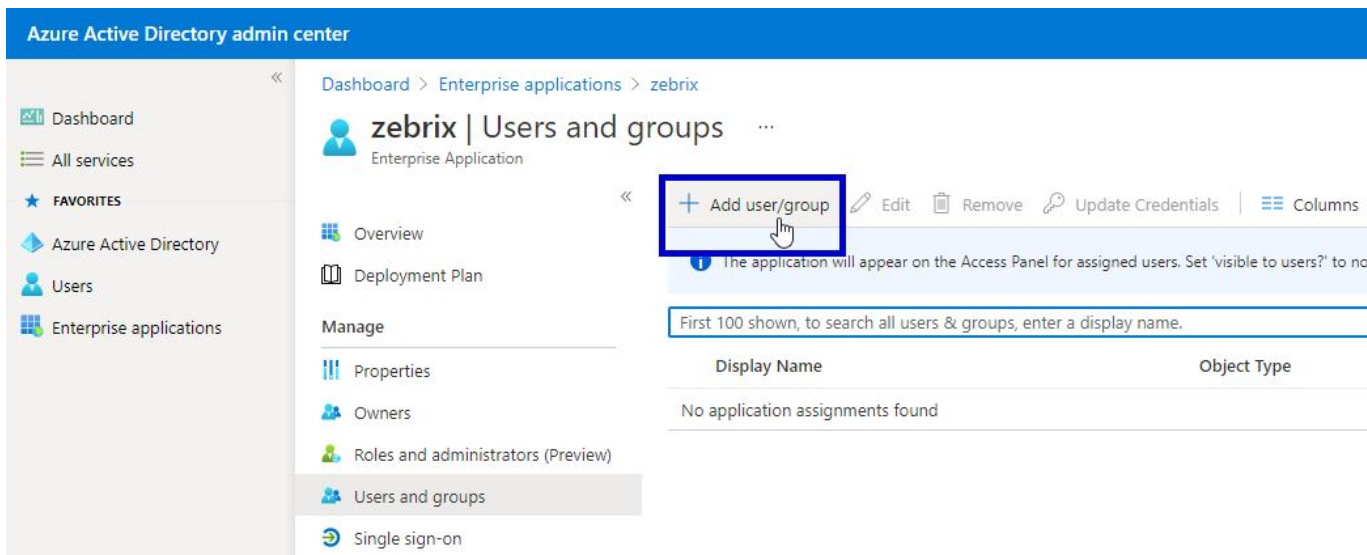
Create a new app using these options and call it "zebrix" or "zebrix CMS"



zebrix overview



Choose which groups/users will be allowed to login



Set the zebrix logo

Save the following logo



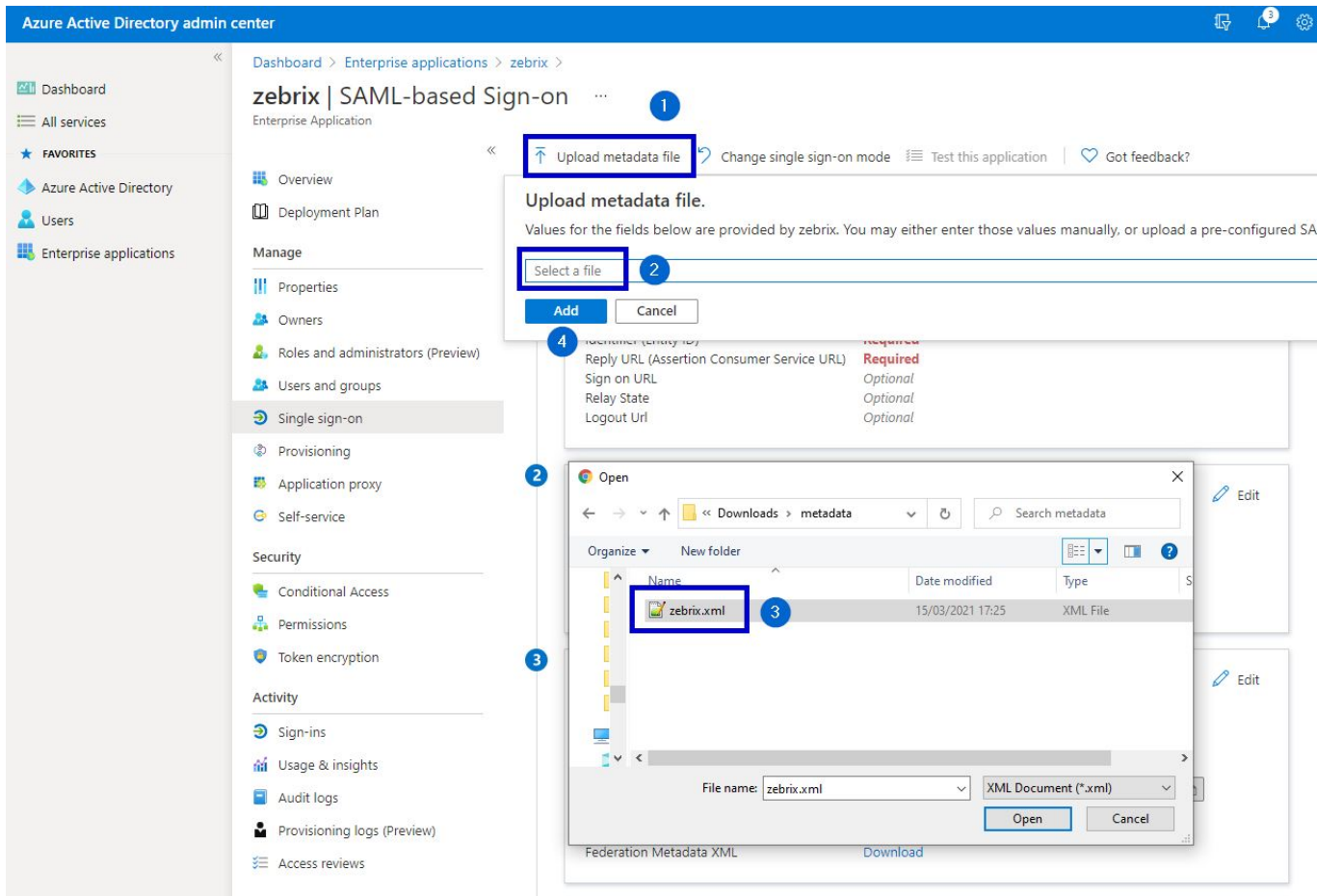
and upload it in the configuration

The screenshot shows the 'zebrix CMS | Properties' page in the Azure AD portal. The 'Name' field is set to 'zebrix CMS'. The 'Logo' field is highlighted with a blue box, showing a circular logo with a stylized 'Z' and the filename 'zebrix rounded logo.png'. The 'Enabled for users to sign-in?' toggle is set to 'Yes'. Other fields include 'Homepage URL', 'User access URL' (https://myapps.microsoft.com/signin/zebrix%20CMS/a4610c37-b629-...), and 'Application ID' (a4610c37-b629-4261-bdcd-6615c83ad15a).

Set up single sign-on : choose SAML

The screenshot shows the 'zebrix | Single sign-on' configuration page. The 'Select a single sign-on method' section is highlighted with a blue box, showing four options: 'Disabled', 'SAML', 'Password-based', and 'Linked'. The 'SAML' option is selected, with a hand cursor pointing to it. The 'SAML' description reads: 'Rich and secure authentication to applications using the SAML (Security Assertion Markup Language) protocol.'

Upload previously downloaded file to portal



Add a "Sign On URL" and save the basic SAML configuration

Some fields will be prefilled thanks to the imported .XML file, but the "Sign On URL" needs to be filled manually. Please specify the following URL: <https://cms.zebrix.net/cn/customername> (please replace **customername** with your actual customer name on zebrix)

Basic SAML Configuration

 Save

Identifier (Entity ID) * ⓘ

The default identifier will be the audience of the SAML response for IDP-initiated SSO

Default

https://auth.zebrix.net

ⓘ 

Reply URL (Assertion Consumer Service URL) * ⓘ

The default reply URL will be the destination in the SAML response for IDP-initiated SSO

Default

https://auth.zebrix.net/sso/postResponse

ⓘ 

Sign on URL ⓘ

https://cms.zebrix.net/cn/customername

Please adjust to your zebrix customer name

Relay State ⓘ

Enter a relay state

Logout Url ⓘ

https://auth.zebrix.net/sso/logout

Skip SSO login test

Test single sign-on with zebrix

To ensure that single sign-on works for your application, to test now?

Yes

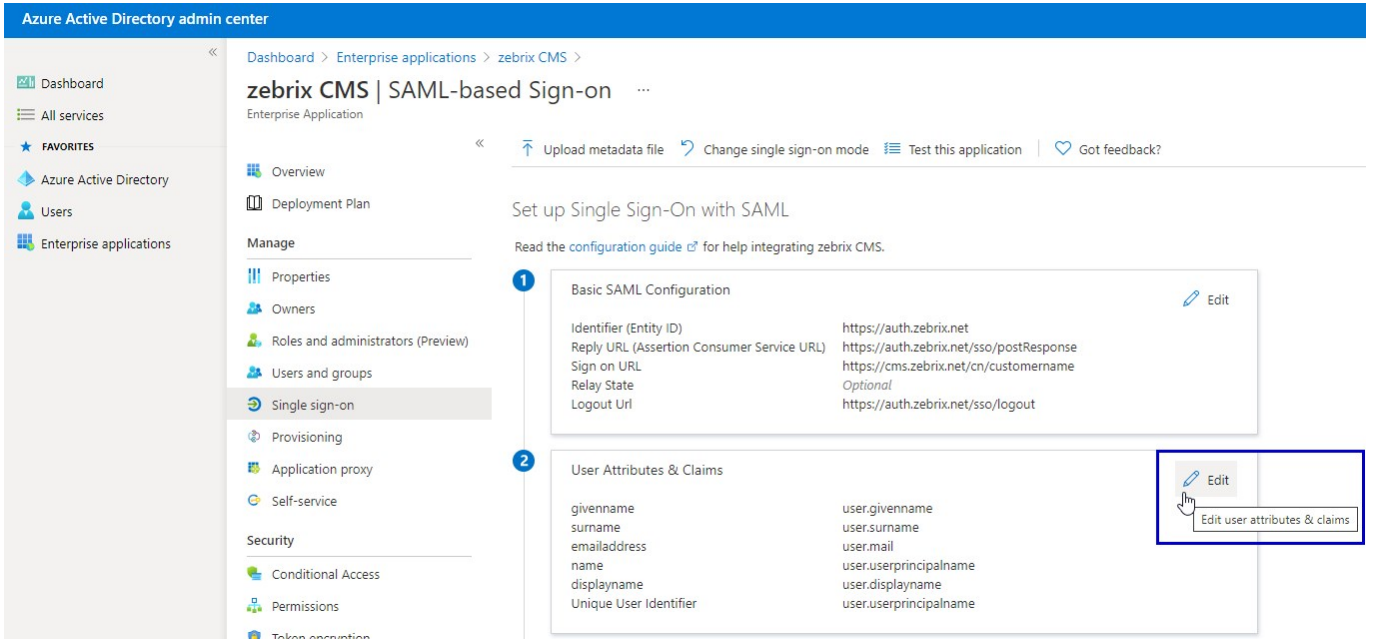
No, I'll test later

No, I'll test later

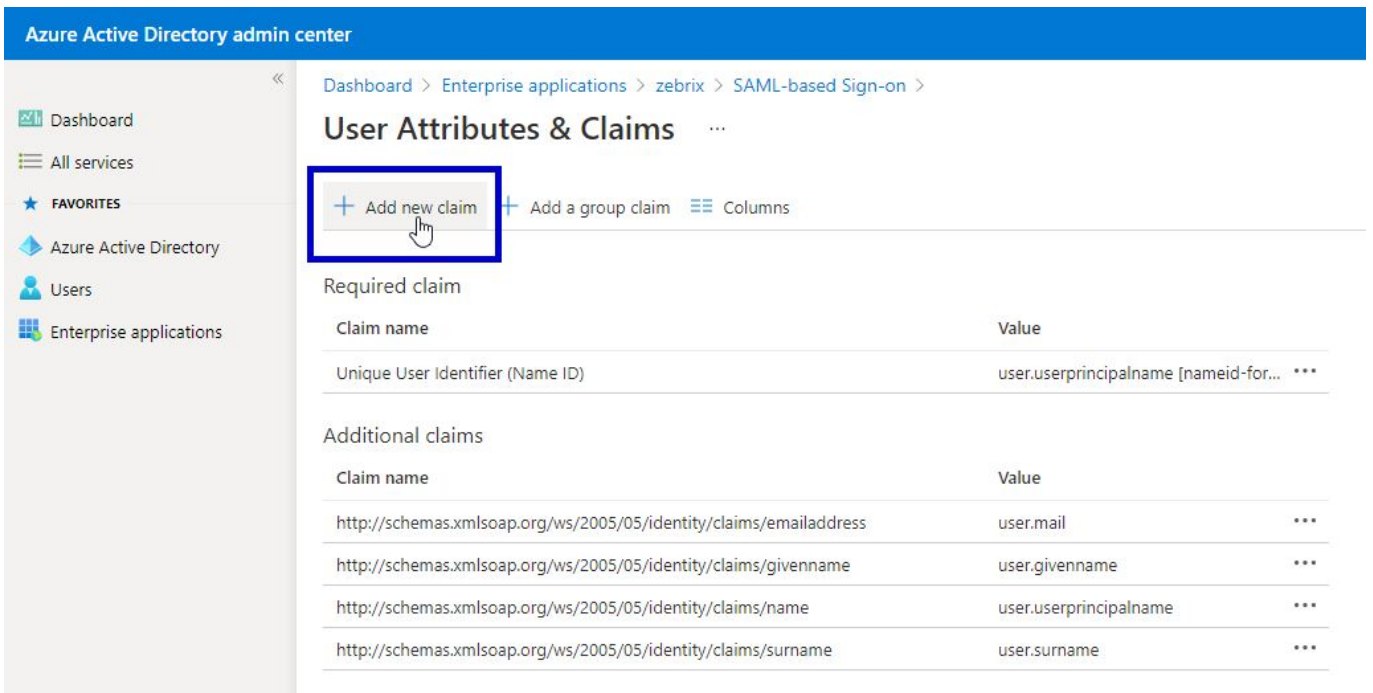
Identifier (Entity ID)

htt

Edit User attributes and claims



Add a new claim





1. Use **displayname** as name
2. In the name space field please copy / paste the following namespace <http://schemas.xmlsoap.org/ws/2005/05/identity/claims>
3. In the dropdown list, select the value **user.displayname**
4. Press the **Save** button

Copy the "App Federation Metadata URL" and send it to support@zebrix.net



Our Technical team will implement your settings on zebrix side and activate to SSO on your account

From:

<https://documentation.zebrix.net/> - **zebrix documentation**

Permanent link:

https://documentation.zebrix.net/doku.php?id=en:sso_implementation_azuread&rev=1623864330

Last update: **2021/06/16 19:25**

