

SSO implementation in zebrix with Azure AD (Office 365)

Save zebrix metadata in a file

1. Surf on <https://auth.zebrix.net/metadata>
2. Right click and save the file to a file with .xml extension



In the Azure AD admin center, add a new app



Create a new app using these options and call it "zebrix" or "zebrix CMS"



zebrix overview



Choose which groups/users will be allowed to login



In the "Properties" section, set the zebrix logo

Save the following logo file



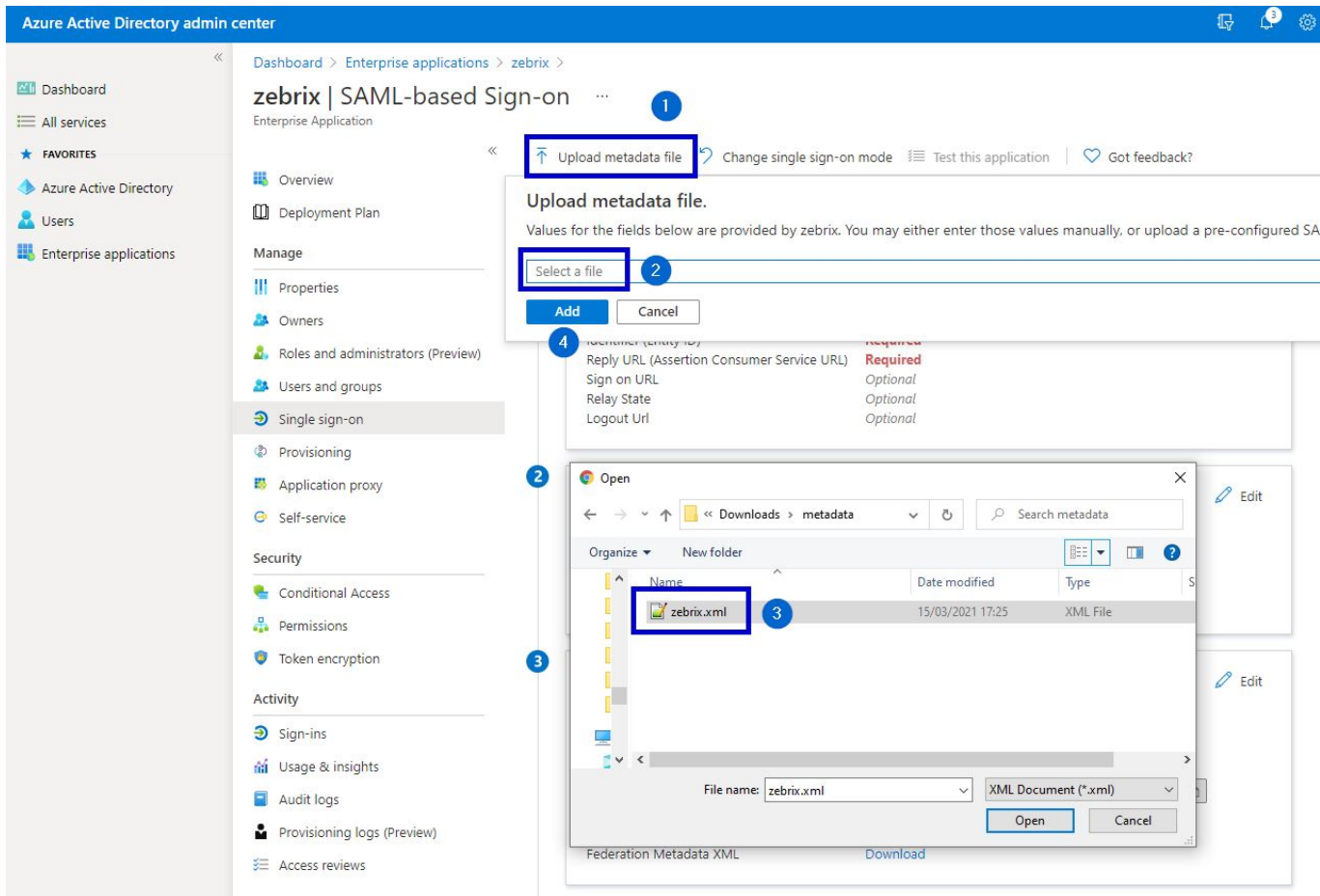
and upload it in the configuration

The screenshot shows the 'zebrix CMS | Properties' page in the Azure AD portal. The 'Name' field is set to 'zebrix CMS'. The 'Logo' field is highlighted with a blue box, showing a circular logo with a stylized 'Z' and the filename 'zebrix rounded logo.png'. The 'Enabled for users to sign-in?' toggle is set to 'Yes'. The 'User access URL' is 'https://myapps.microsoft.com/signin/zebrix%20CMS/a4610c37-b629-...' and the 'Application ID' is 'a4610c37-b629-4261-bdcd-6615c83ad15a'. A 'Save' button is highlighted with a blue box.

Set up single sign-on : choose SAML

The screenshot shows the 'Select a single sign-on method' page in the Azure AD portal. The 'SAML' option is highlighted with a blue box. The 'SAML' option is described as 'Rich and secure authentication to applications using the SAML (Security Assertion Markup Language) protocol.' The 'Disabled' option is also visible, with a note that 'Single sign-on is not enabled. The user won't be able to launch the app from My Apps.' The 'Password-based' and 'Linked' options are also visible.

Upload previously downloaded file to portal



Add a "Sign On URL" and save the basic SAML configuration

Some fields will be prefilled thanks to the imported .XML file, but the "Sign On URL" needs to be filled manually. Please specify the following URL: <https://cms.zebrix.net/cn/customername> (please replace **customername** with your actual customer name on zebrix)

Basic SAML Configuration

 Save

Identifier (Entity ID) * ⓘ

The default identifier will be the audience of the SAML response for IDP-initiated SSO

Default

ⓘ 

Reply URL (Assertion Consumer Service URL) * ⓘ

The default reply URL will be the destination in the SAML response for IDP-initiated SSO

Default

ⓘ 

Sign on URL ⓘ

Please adjust to your zebrix customer name

Relay State ⓘ

Logout Url ⓘ

Skip SSO login test

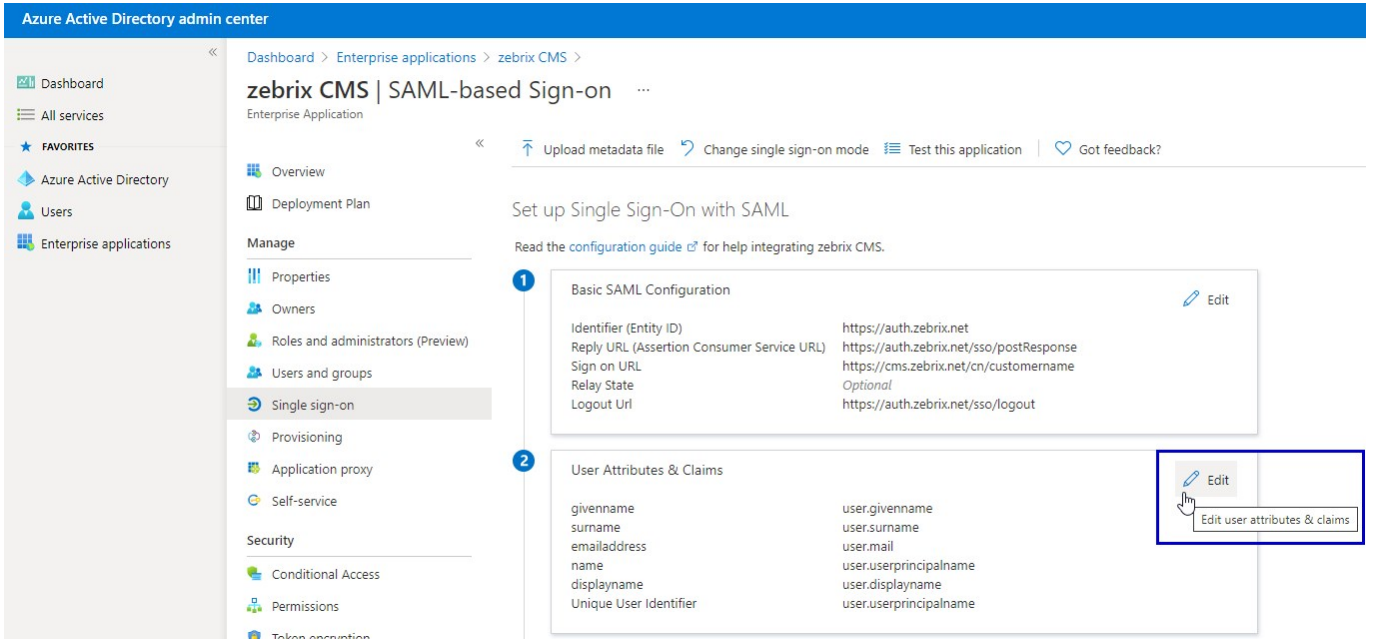
Test single sign-on with zebrix

To ensure that single sign-on works for your application, to test now?

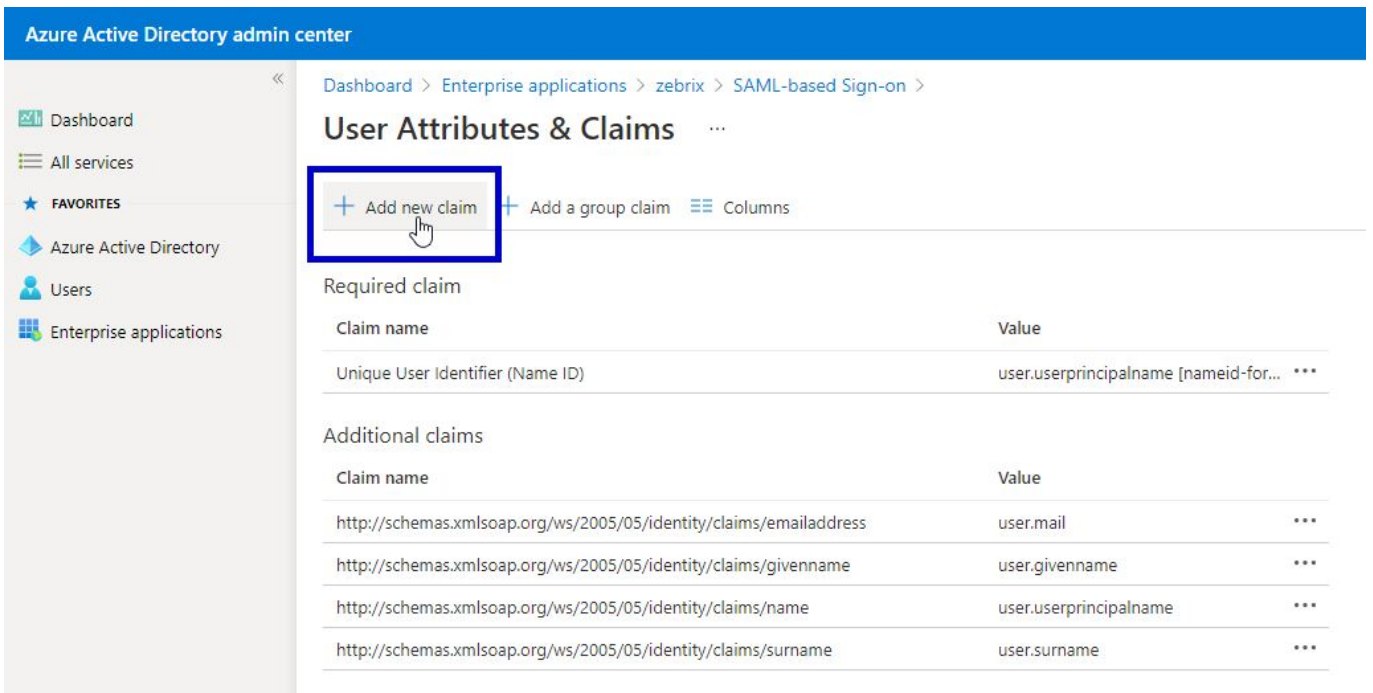
Identifier (Entity ID)

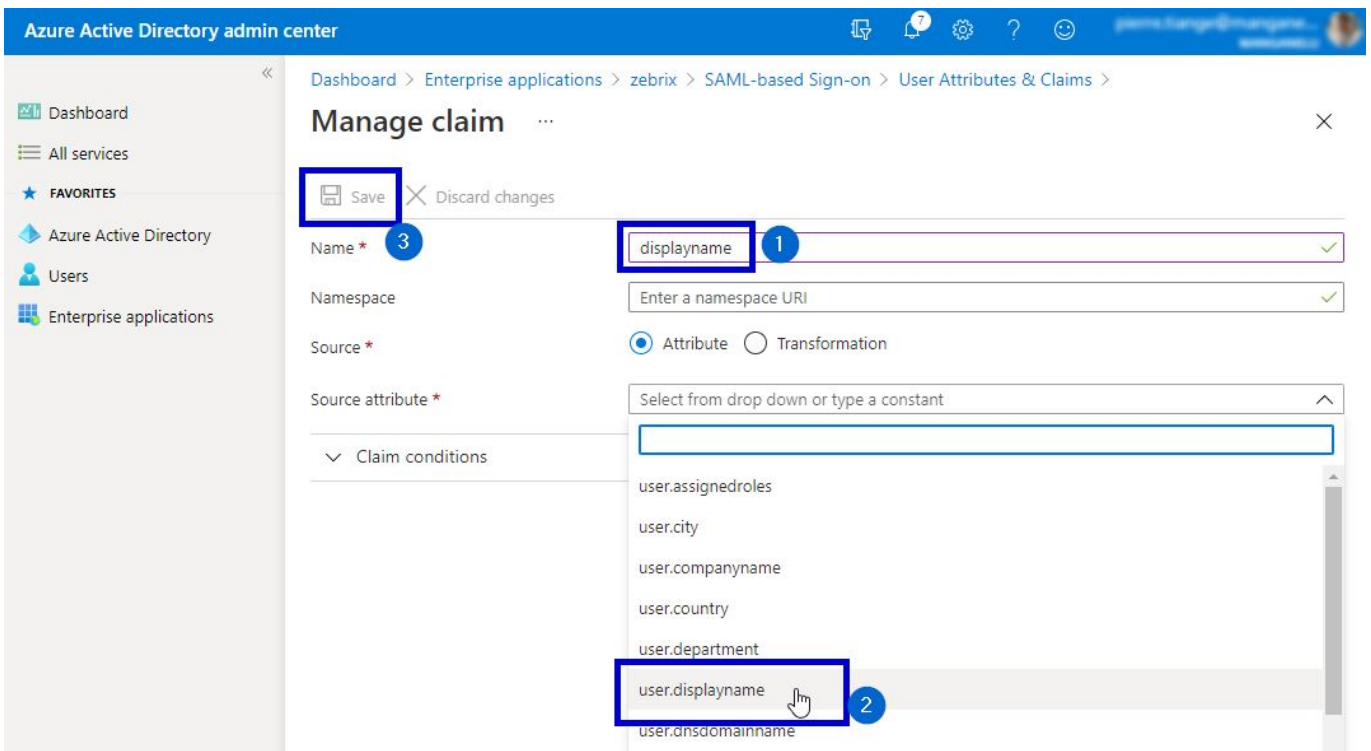
htt

Edit User attributes and claims



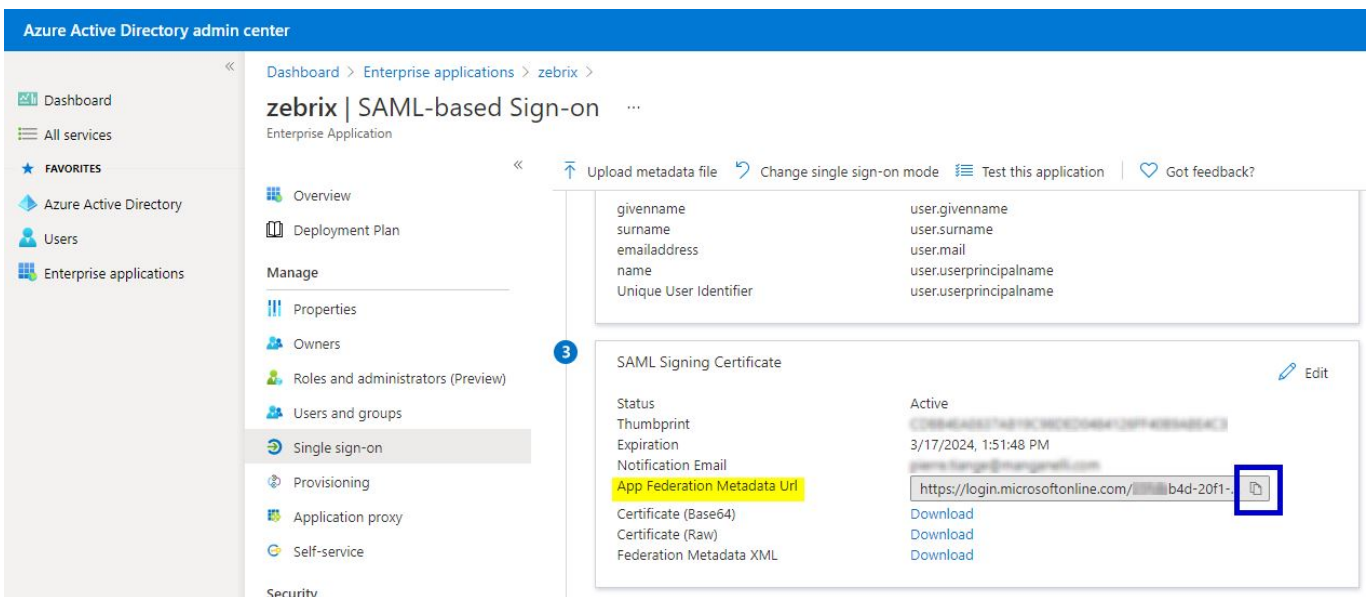
Add a new claim





1. Use **displayname** as name
2. In the name space field please copy / paste the following namespace <http://schemas.xmlsoap.org/ws/2005/05/identity/claims>
3. In the dropdown list, select the value **user.displayname**
4. Press the **Save** button

Copy the "App Federation Metadata URL" and send it to support@zebrix.net



Our Technical team will implement your settings on zebrix side and activate to SSO on your account

From:

<https://documentation.zebrix.net/> - **zebrix documentation**

Permanent link:

https://documentation.zebrix.net/doku.php?id=en:sso_implementation_azuread&rev=1623864414

Last update: **2021/06/16 19:26**

