

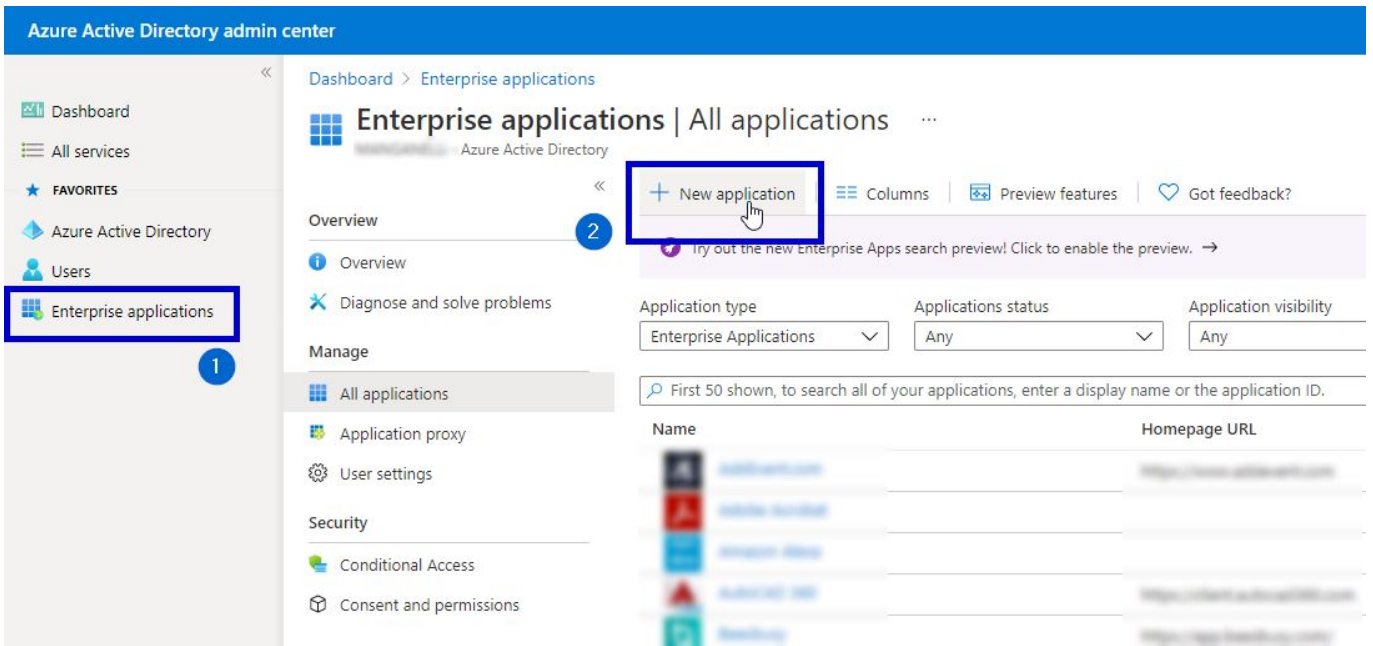
# SSO implementation in zebrix with Azure AD (Office 365)

## Save zebrix metadata in a file

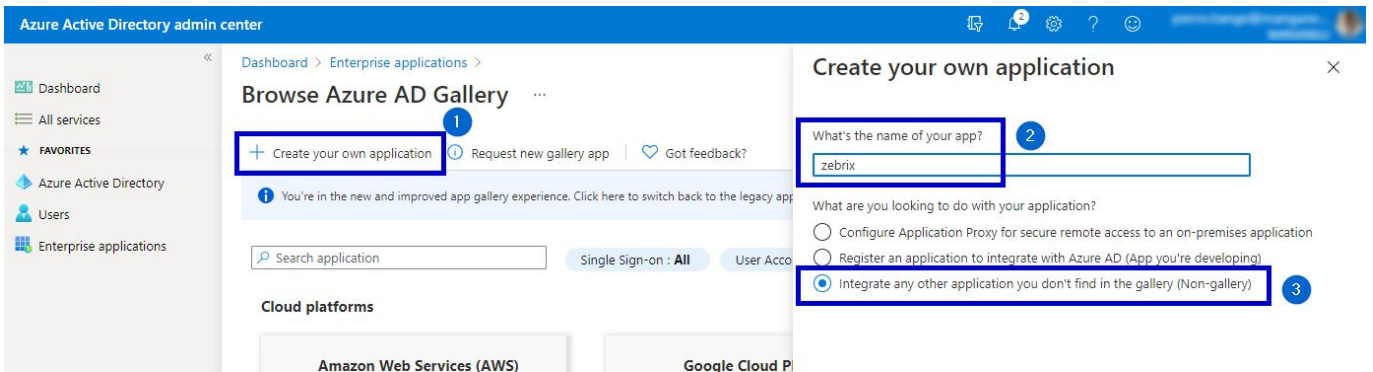
1. Surf on <https://auth.zebrix.net/metadata>
2. Right click and save the file to a file with .xml extension



## In the Azure AD admin center, add a new app



**Create a new app using these options and call it "zebrix" or "zebrix CMS"**



**zebrix overview**



### Choose which groups/users will be allowed to login

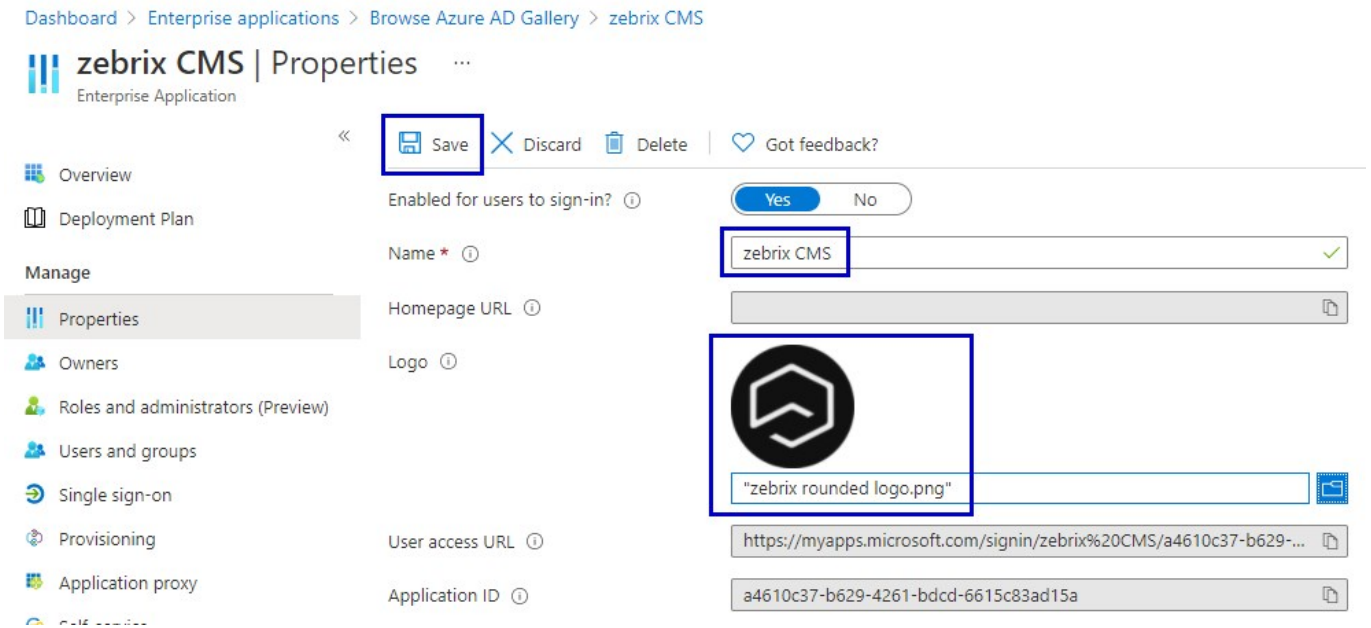


### In the "Properties" section, set the zebrix logo

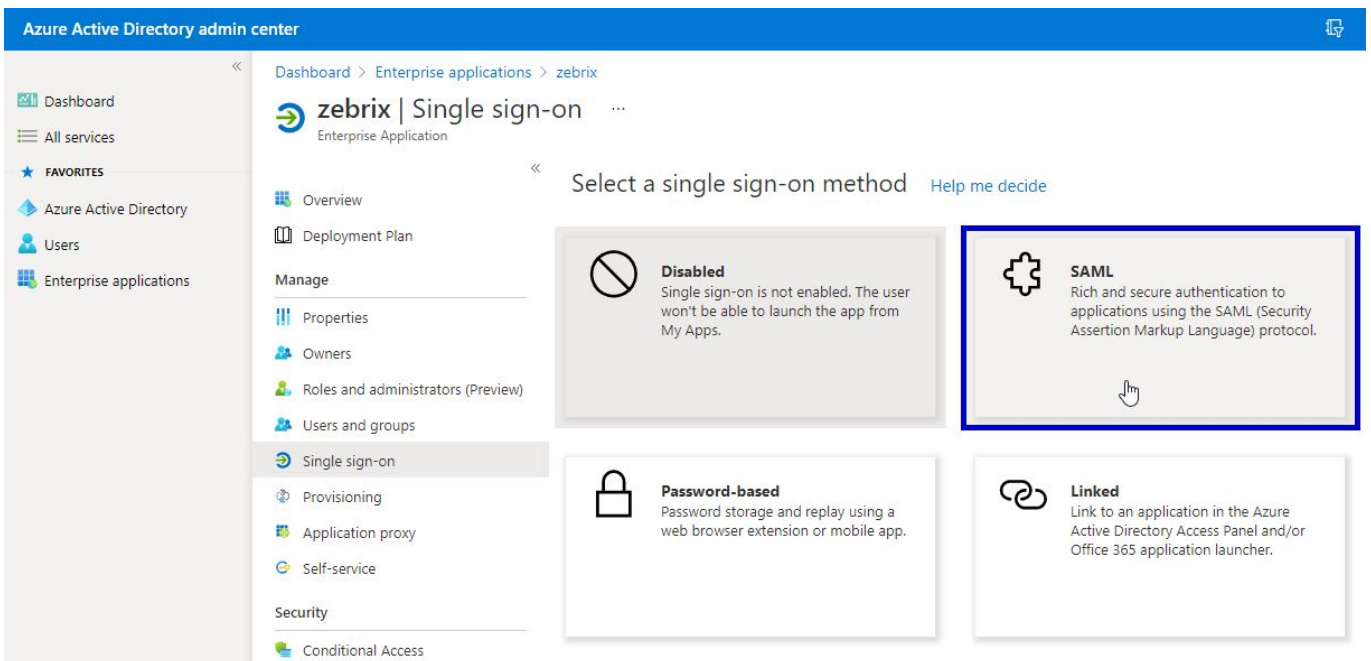
Save the following logo file



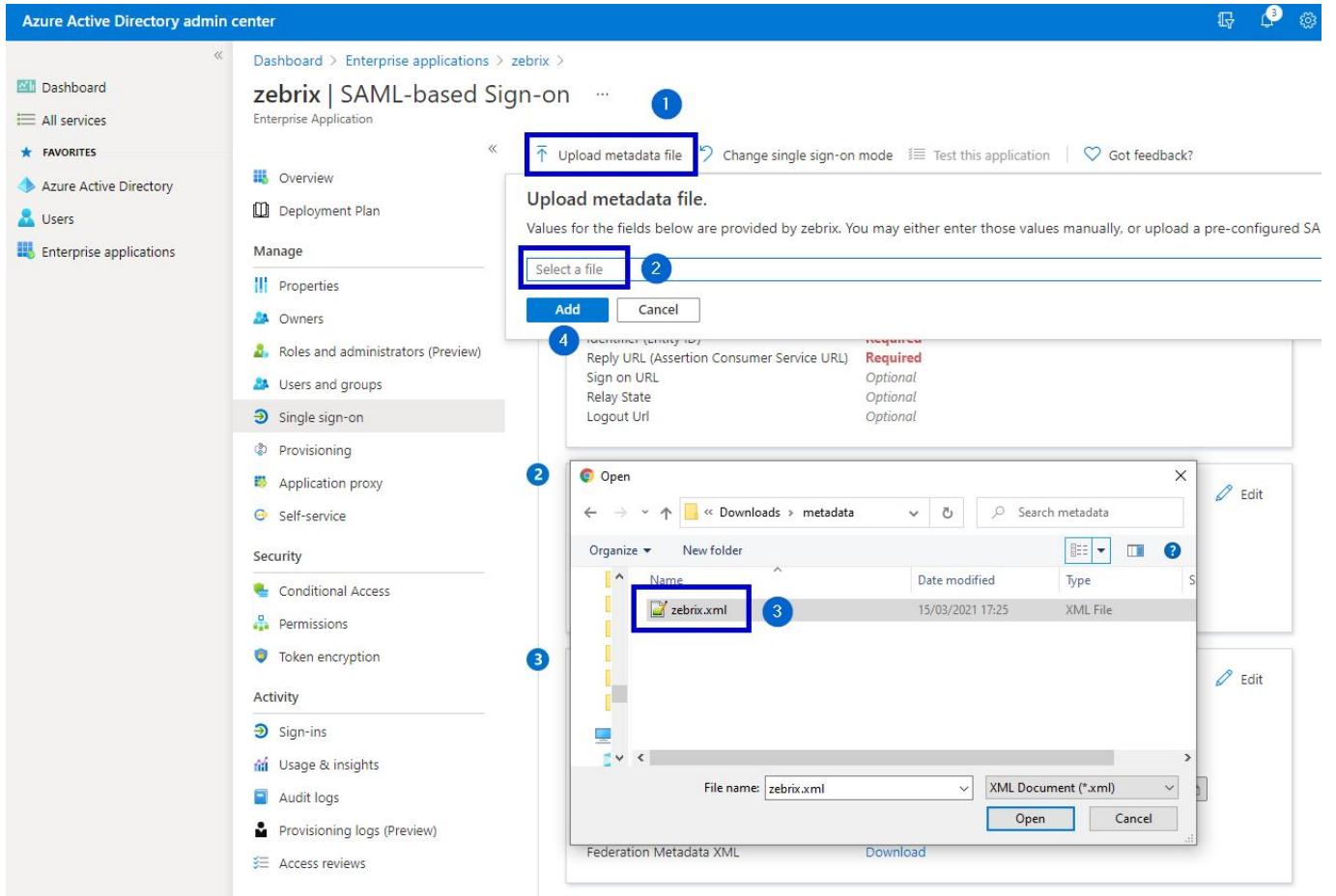
and upload it in the configuration



**In the "Single Sign-on" section, configure the SSO: choose SAML**



**Upload the XML metadata file that has been previously downloaded**



### Add a "Sign On URL" and save the basic SAML configuration

Some fields will be prefilled thanks to the imported .XML file, but the "Sign On URL" needs to be filled manually. Please specify the following URL: <https://cms.zebrix.net/cn/customername> (please replace **customername** with your actual customer name on zebrix)

# Basic SAML Configuration

 Save

Identifier (Entity ID) \* ⓘ

The default identifier will be the audience of the SAML response for IDP-initiated SSO

Default

ⓘ 

Reply URL (Assertion Consumer Service URL) \* ⓘ

The default reply URL will be the destination in the SAML response for IDP-initiated SSO

Default

ⓘ 

Sign on URL ⓘ

**Please adjust to your zebrix customer name**

Relay State ⓘ

Logout Url ⓘ

## Skip SSO login test

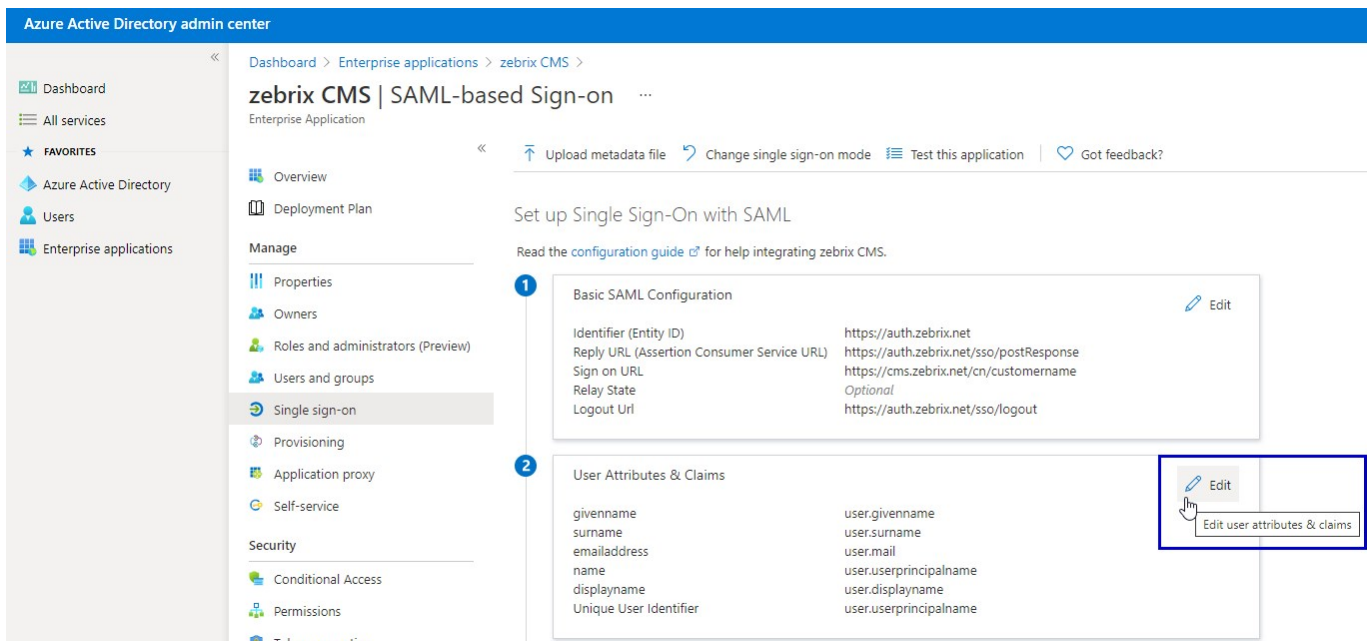
### Test single sign-on with zebrix

To ensure that single sign-on works for your application, to test now?

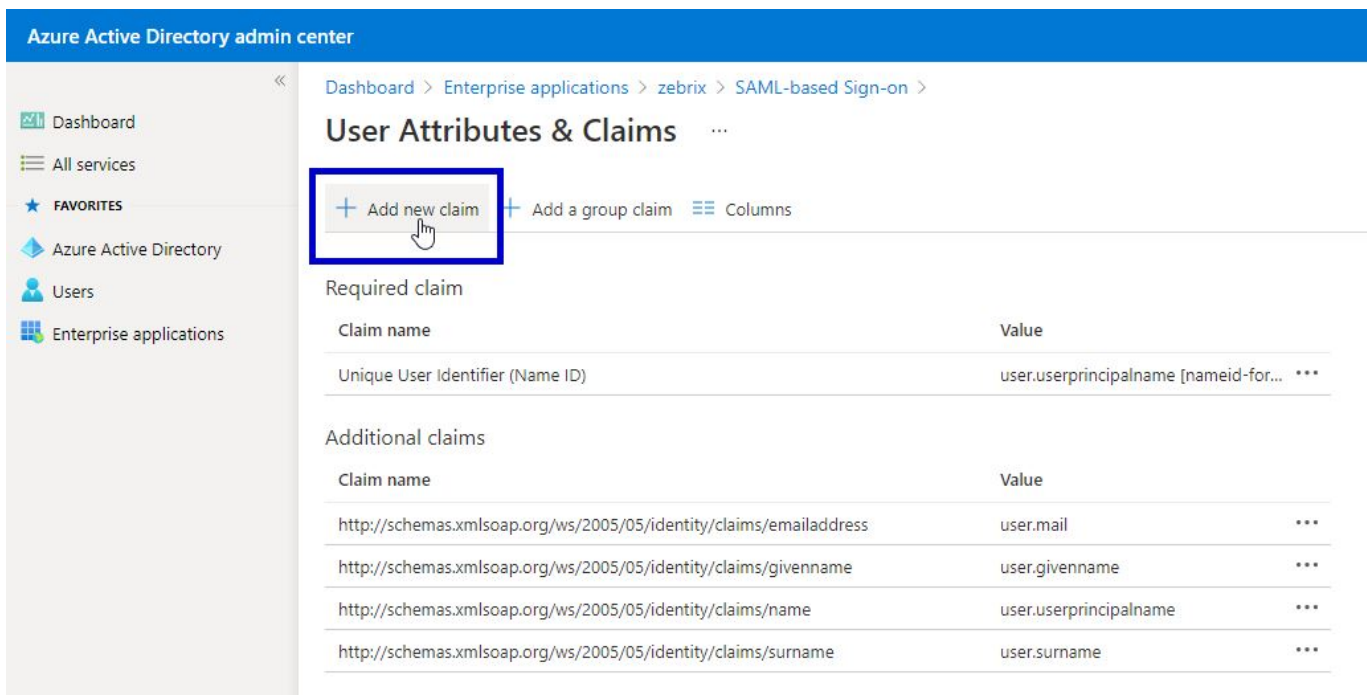
Identifier (Entity ID)

htt

## Edit User attributes and claims



## Add a new claim





1. Use **displayname** as name
2. In the name space field please copy / paste the following namespace <http://schemas.xmlsoap.org/ws/2005/05/identity/claims>
3. In the dropdown list, select the value **user.displayname**
4. Press the **Save** button

## Copy the "App Federation Metadata URL" and send it to support@zebrix.net



# Our Technical team will implement your settings on zebrix side and activate the SSO on your account

## How to connect to zebrix using SSO?

### Option 1: using the "sign on URL"

<https://cms.zebrix.net/cn/customername>

From:  
<https://documentation.zebrix.net/> - **zebrix documentation**

Permanent link:  
[https://documentation.zebrix.net/doku.php?id=en:sso\\_implementation\\_azuread&rev=1623865348](https://documentation.zebrix.net/doku.php?id=en:sso_implementation_azuread&rev=1623865348)

Last update: **2021/06/16 19:42**

