

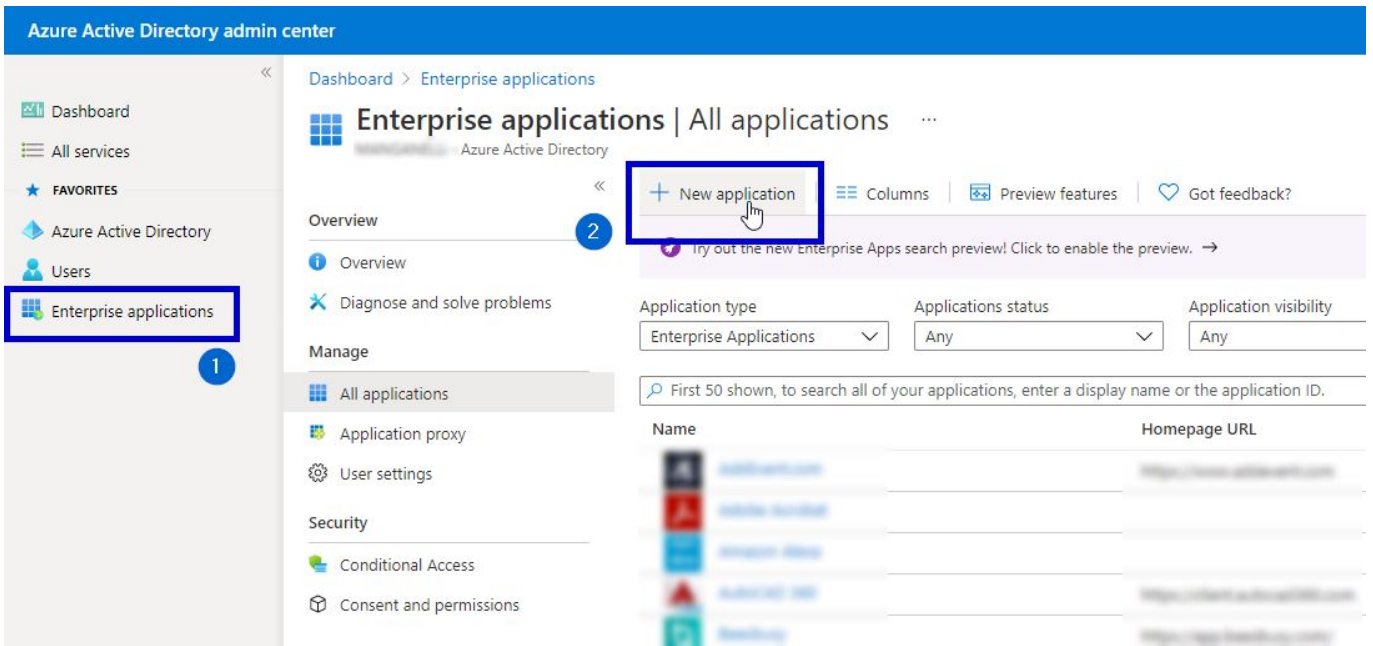
SSO implementation in zebrix with Azure AD (Office 365)

Save zebrix metadata in a file

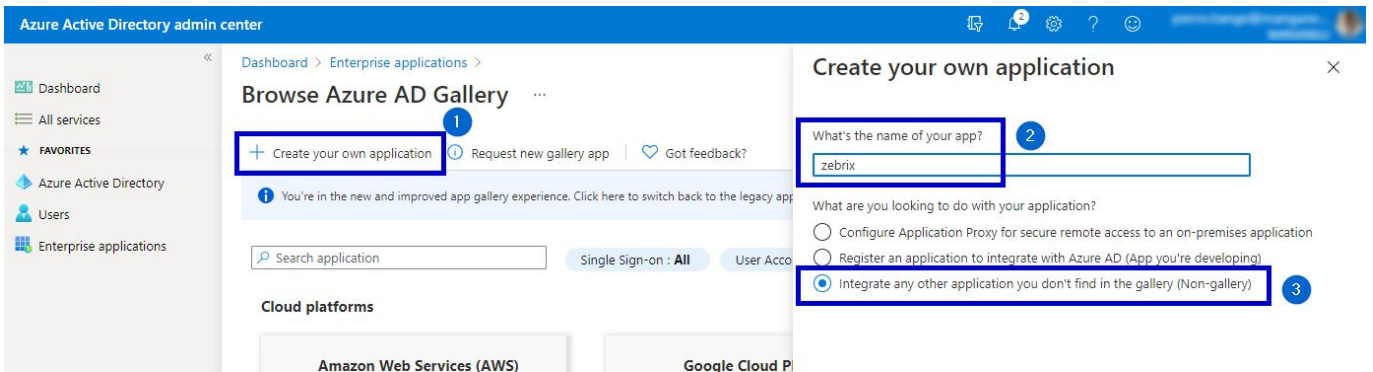
1. Surf on <https://auth.zebrix.net/metadata>
2. Right click and save the file to a file with .xml extension



In the Azure AD admin center, add a new app



Create a new app using these options and call it "zebrix" or "zebrix CMS"



zebrix overview



Choose which groups/users will be allowed to login

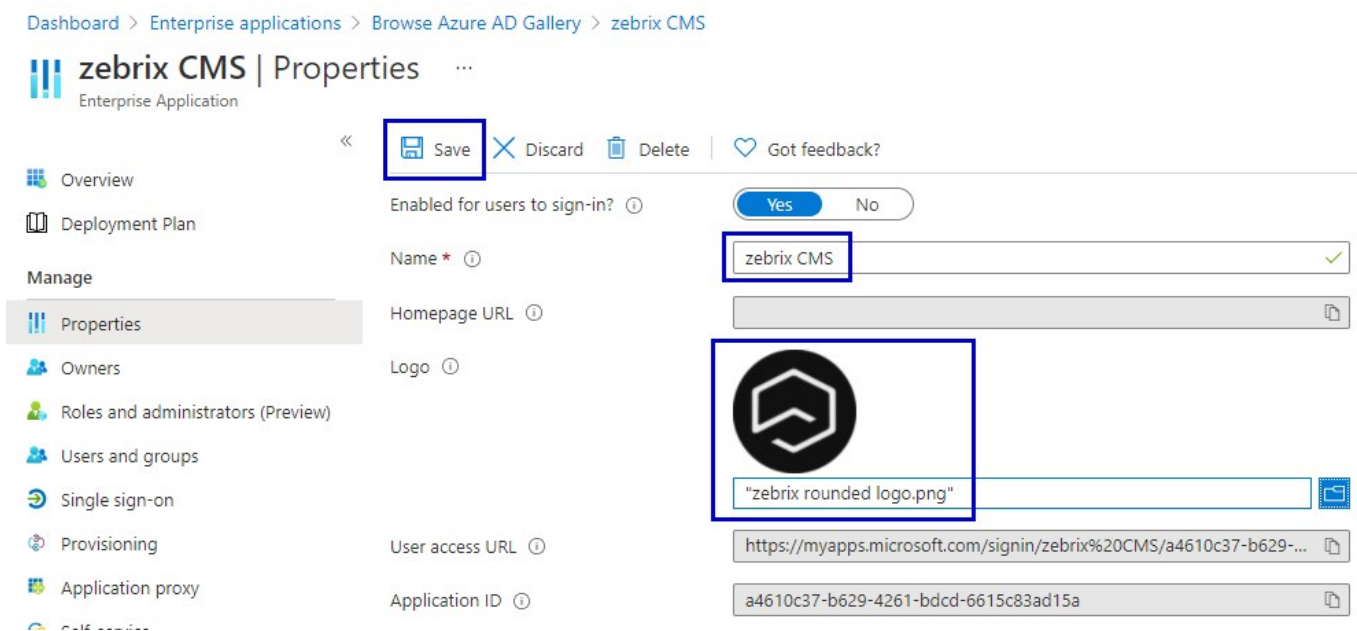


In the "Properties" section, set the zebrix logo

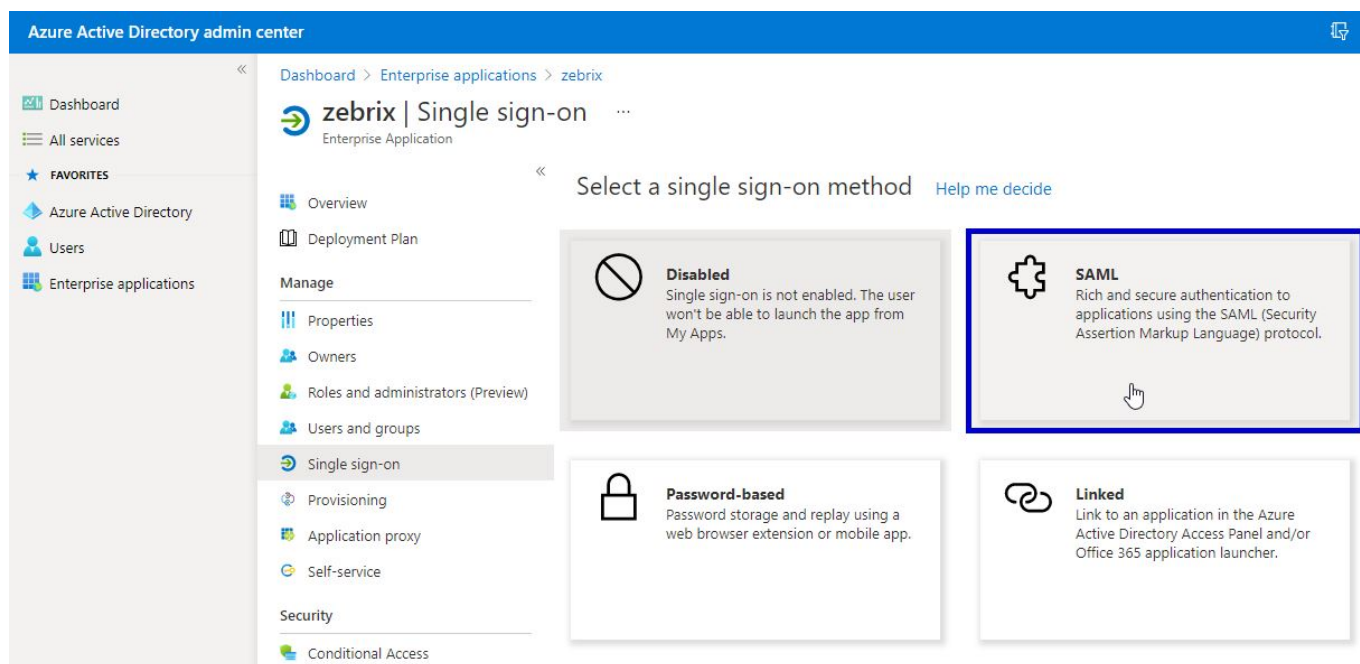
Save the following logo file



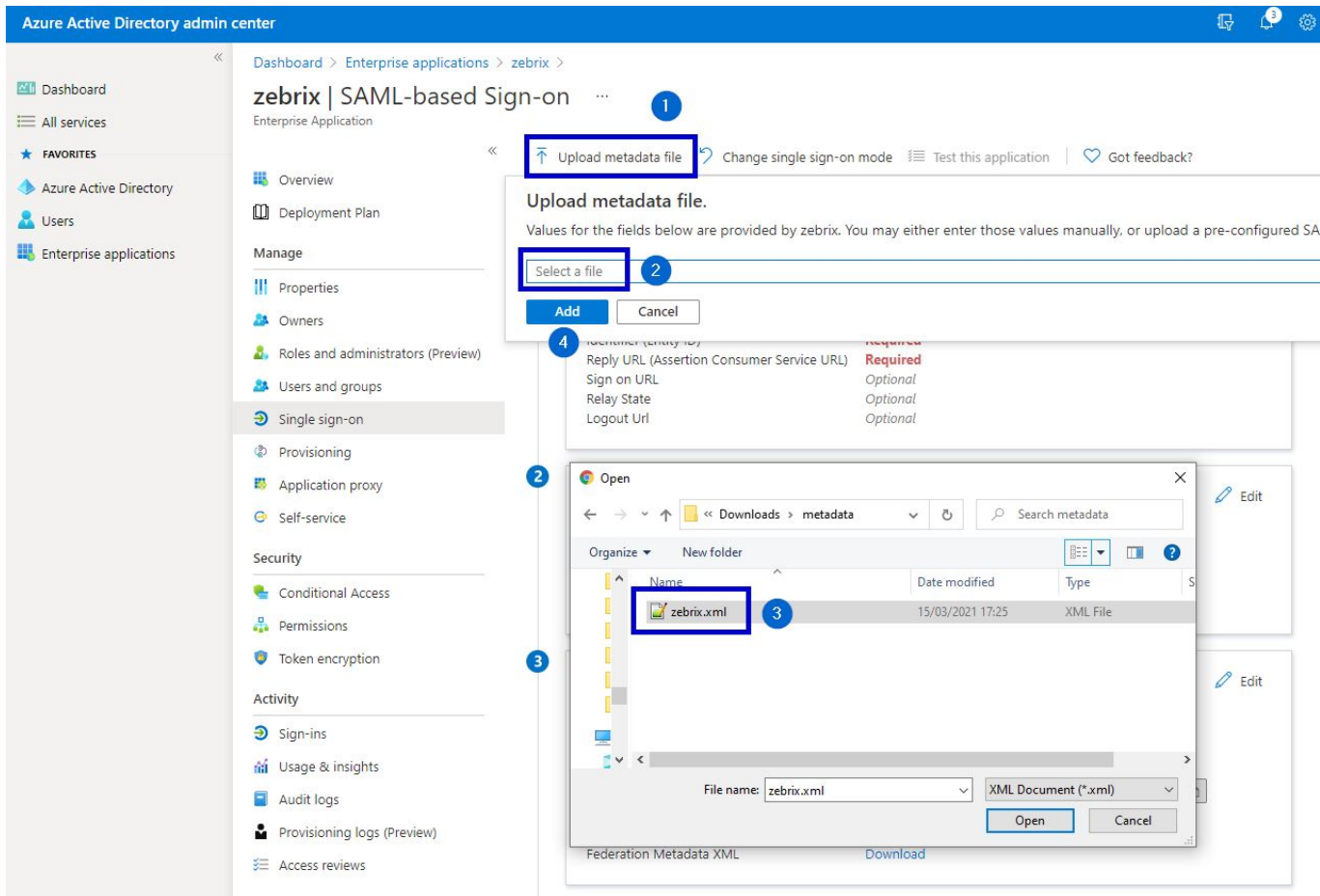
and upload it in the configuration



In the "Single Sign-on" section, configure the SSO: choose SAML



Upload the XML metadata file that has been previously downloaded



Add a "Sign On URL" and save the basic SAML configuration

Some fields will be prefilled thanks to the imported .XML file, but the "Sign On URL" needs to be filled manually. Please specify the following URL: <https://cms.zebrix.net/cn/customername> (please replace **customername** with your actual customer name on zebrix)

Basic SAML Configuration

 Save

Identifier (Entity ID) * ⓘ

The default identifier will be the audience of the SAML response for IDP-initiated SSO

Default

https://auth.zebrix.net

ⓘ 

Reply URL (Assertion Consumer Service URL) * ⓘ

The default reply URL will be the destination in the SAML response for IDP-initiated SSO

Default

https://auth.zebrix.net/sso/postResponse

ⓘ 

Sign on URL ⓘ

https://cms.zebrix.net/cn/customername

Please adjust to your zebrix customer name

Relay State ⓘ

Enter a relay state

Logout Url ⓘ

https://auth.zebrix.net/sso/logout

Skip SSO login test

Test single sign-on with zebrix

To ensure that single sign-on works for your application, to test now?

Yes

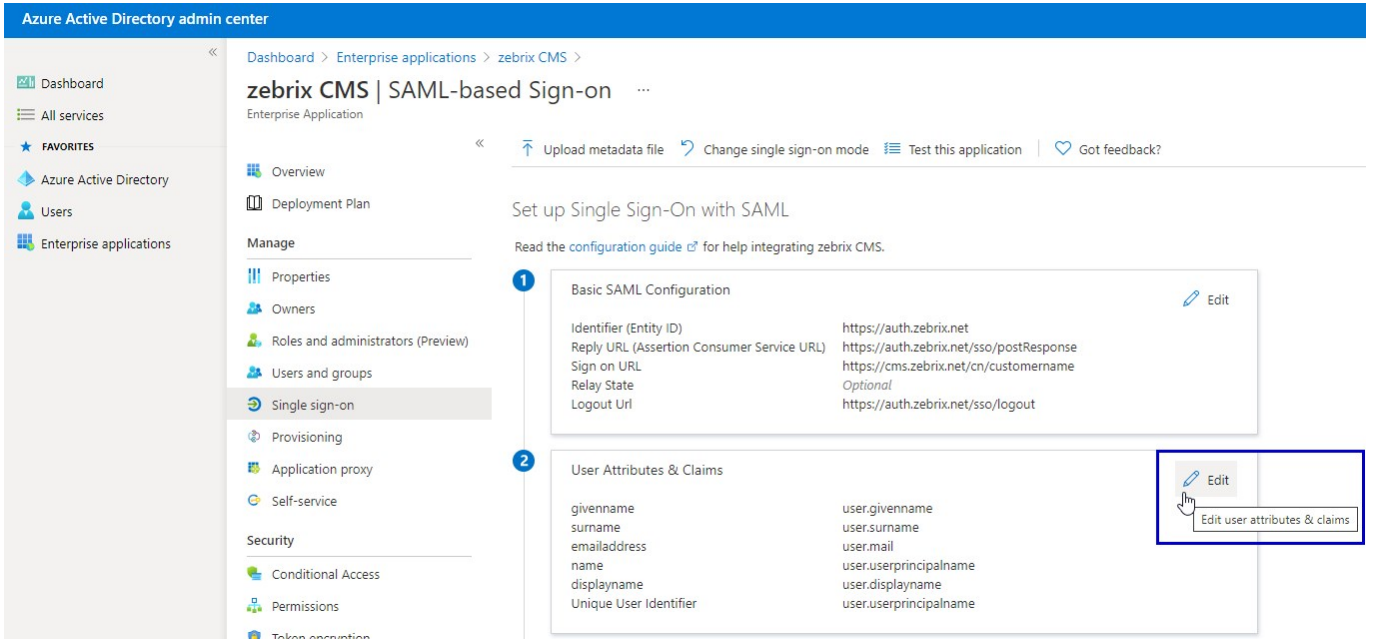
No, I'll test later

No, I'll test later

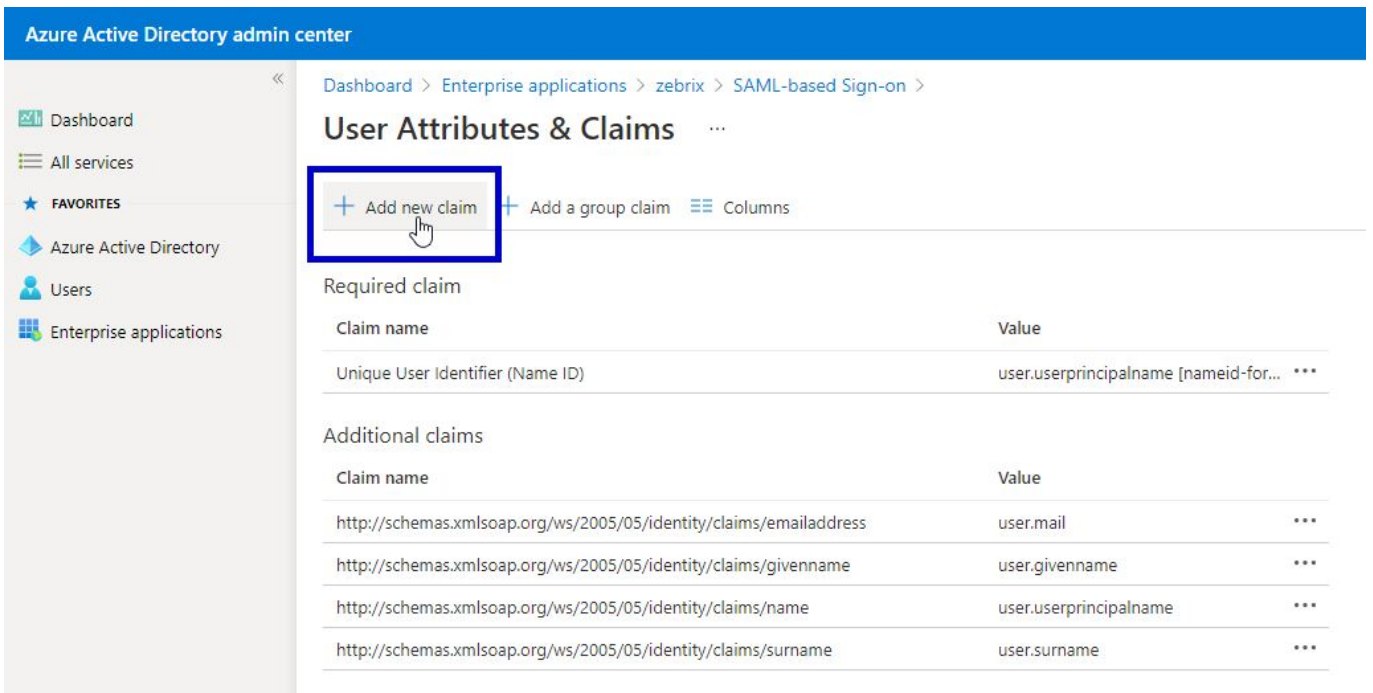
Identifier (Entity ID)

htt

Edit User attributes and claims



Add a new claim





1. Use **displayname** as name
2. In the name space field please copy / paste the following namespace <http://schemas.xmlsoap.org/ws/2005/05/identity/claims>
3. In the dropdown list, select the value **user.displayname**
4. Press the **Save** button

Copy the "App Federation Metadata URL" and send it to support@zebrix.net



Our Technical team will implement your settings on zebrix side and activate the SSO on your account

How to connect to zebrix using SSO?

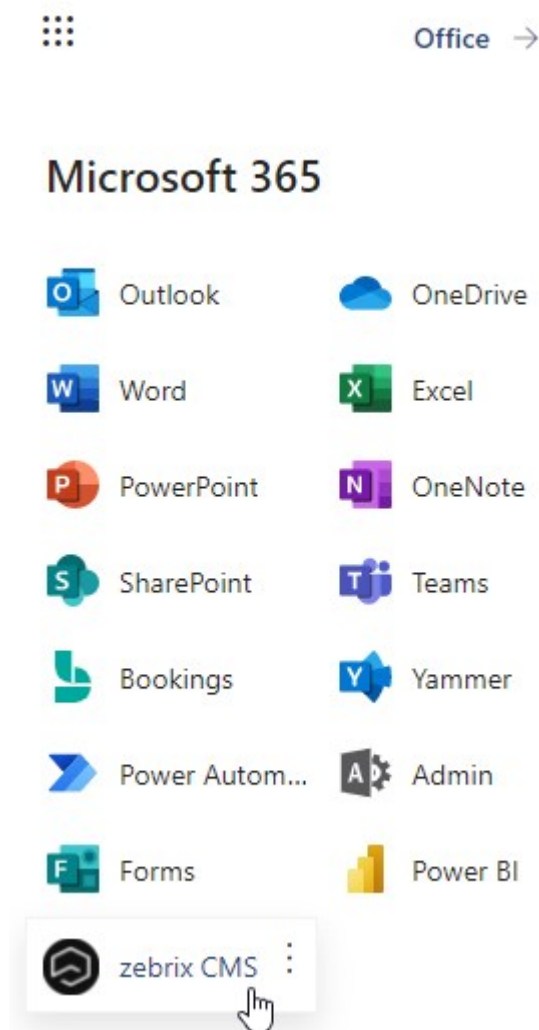
Option 1: using the "sign on URL"

<https://cms.zebrix.net/cn/customername>

Accessing to this URL will trigger the "Single Sign On" verification process and you'll be either directly logged in to zebrix or you'll be redirected to the Microsoft authentication portal.

You can save this URL in your bookmarks.

Option 2: you can use the "zebrix" application shortcut icon in your Office 365 portal



How to manage SSO users in zebrix?

Please have a look to [this page](#).

From: <https://documentation.zebrix.net/> - **zebrix documentation**

Permanent link: https://documentation.zebrix.net/doku.php?id=en:sso_implementation_azuread&rev=1623866116

Last update: **2021/06/16 19:55**

